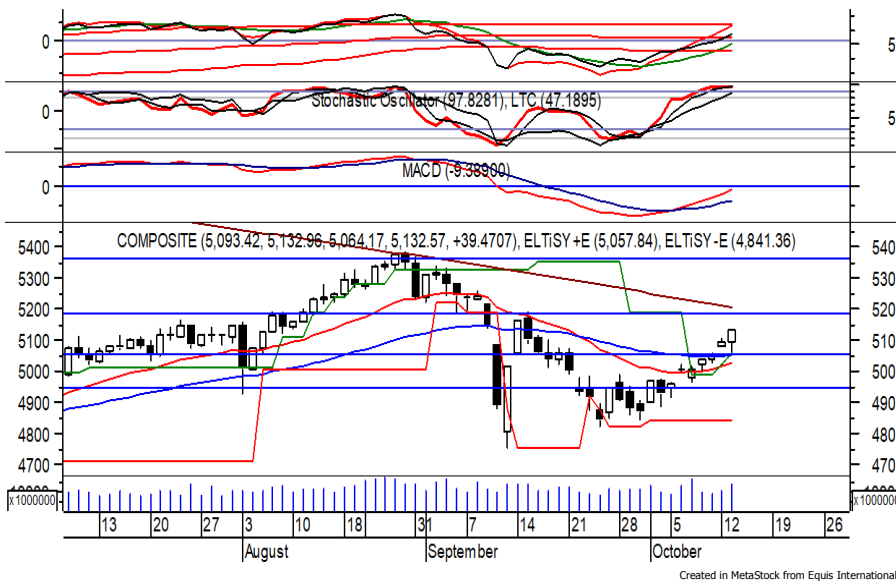


Indeks Harga Saham Gabungan (IHSG)

(IHSG)

Range : 5,080 — 5,185



Sempat bergerak melemah pada perdagangan kemarin, IHSG akhirnya ditutup menguat berada di level 5,132.

Indeks tampak sedang mencoba bertahan di atas EMA 50, di mana berpeluang berlanjut menguat menuju resistance level 5,185.

MACD berada pada kecenderungan menguat, namun stochastic yang mengindikasikan bearish crossover berpotensi menghambat laju penguatan indeks. Hari ini diperkirakan indeks kembali fluktuatif dengan kecenderungan menguat terbatas.

| Level | Support | Resistance |
|-------|---------|------------|
| I | 5,080 | 5,185 |
| II | 5,045 | 5,220 |
| III | 5,000 | 5,245 |

| Top Active | | | Top Foreign Buy | | | Top Foreign Sell | | | Top Leading | | |
|------------|-------|--------|-----------------|-------|------------|------------------|-------|-------------|-------------|---------|---------|
| Code | Close | Freq | Code | Close | Volume | Code | Close | Volume | Code | IDX Pts | Chg (%) |
| BRIS | 1,125 | 77,579 | BULL | 318 | 80,108,800 | BSDE | 795 | -33,899,700 | BNLI | 14.9 | 24.4 |
| AGRO | 430 | 52,175 | TOWR | 1,030 | 30,884,400 | SMRA | 625 | -25,207,800 | BBRI | 9.9 | 2.8 |
| BBKP | 256 | 33,296 | BRIS | 1,125 | 29,322,500 | MNCN | 790 | -16,362,900 | BRPT | 2.9 | 4.2 |
| BBRI | 3,280 | 28,199 | FREN | 84 | 29,239,500 | MPMX | 370 | -16,002,000 | BMRI | 2.1 | 0.9 |
| WSKT | 705 | 14,721 | BRPT | 875 | 21,421,296 | TLKM | 2,730 | -10,459,500 | BRIS | 1.9 | 25.0 |
| PGAS | 1,035 | 14,283 | BRMS | 51 | 17,047,600 | BMRI | 5,675 | -10,437,200 | Top Lagging | | |
| TLKM | 2,730 | 13,170 | BMTR | 232 | 13,982,600 | AGRO | 430 | -8,153,200 | POLL | -3.4 | -6.6 |
| TOWR | 1,030 | 12,332 | MDKA | 1,805 | 13,668,400 | WSBP | 168 | -5,633,000 | DNET | -1.4 | -3.3 |
| PURA | 128 | 12,007 | TBIG | 1,350 | 11,771,884 | BFIN | 386 | -5,632,900 | INCO | -1.0 | -2.8 |
| BBNI | 4,760 | 11,424 | CTRA | 765 | 10,430,400 | ASII | 4,740 | -5,159,600 | INKP | -0.7 | -1.7 |
| | | | | | | | | | LIFE | -0.7 | -6.6 |

PT. Medco Energi Internasional, Tbk. (MEDC)

β : 2.57

Price : 352

TP: 360-370



MEDC ditutup melemah pada perdagangan sebelumnya berada di IDR 352.

Harga tampak sedang melanjutkan konsolidasi dan berpotensi menguji support level yang berada di IDR 336.

Peluang penguatan terjadi jika harga mampu bertahan di (atas) level tersebut, di mana berpeluang menuju resistance level 360 hingga IDR 370. MACD mengalami golden cross.

Rekomendasi : Buy on Weakness
Entry Level : 336-344
Take Profit : 360-370
Stop Loss : 326

PT. Aneka Tambang, Tbk.

(ANTM) β :

1.84

Price :

765

TP:

780-795



ANTM pada perdagangan sebelumnya ditutup melemah berada di level IDR 765.

Harga berpotensi menguji support level yang berada di IDR 745, dan berpeluang menguat jika mampu bertahan di (atas) level tersebut.

Golden cross yang terjadi pada MACD memberikan peluang menuju resistance level IDR 780 hingga IDR 795.

Kecuali melemah di bawah IDR 725.

Rekomendasi : Buy on Weakness
Entry Level : 745-760
Take Profit : 780-795
Stop Loss : 720

PT. Bank Tabungan Negara (Persero), Tbk.

(BBTN) β :

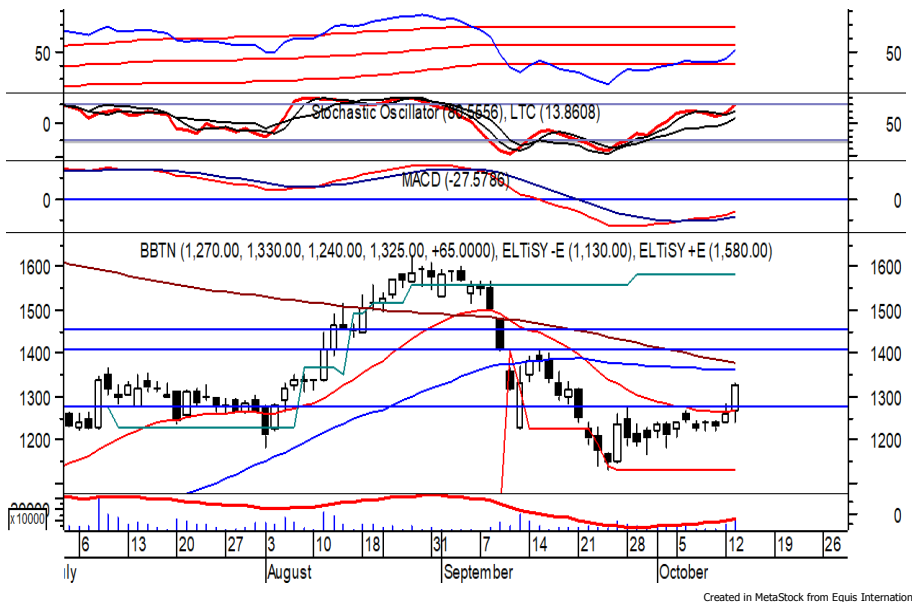
2.35

Price :

1,325

TP:

1,365-1,405



BBTN kembali ditutup menguat melanjutkan penguatan yang terjadi sebelumnya.

Harga tampak sedang bergerak melewati EMA 20, di mana berpeluang berlanjut menuju resistance level IDR 1,365 hingga IDR 1,405.

MACD dan stochastic berada pada kecenderungan menguat.

Kecuali harga berbalik melemah hingga di bawah IDR 1,275.

Rekomendasi : Trading Buy
Entry Level : 1,305-1,325
Take Profit : 1,365-1,405
Stop Loss : 1,270

PT. Bank Rakyat Indonesia (Persero), Tbk. (BBRI) β : 1.39 Price : 3,280 TP: 3,370-3,450



BBRI pada perdagangan kemarin ditutup menguat berada di level IDR 3,280.

Harga tampak sedang bergerak melewati EMA 50 dan/atau resistance level IDR 3,200, di mana berpeluang berlanjut menguat menuju level berikutnya di IDR 3,370 hingga IDR 3,450. MACD dan stochastic berada pada kecenderungan menguat. Kecuali harga berbalik melemah hingga di bawah IDR 3,190.

Rekomendasi : Trading Buy
Entry Level : 3,240-3,280
Take Profit : 3,370-3,450
Stop Loss : 3,180

PT. Ciputra Development, Tbk. (CTRA) β : 2.04 Price : 765 TP: 790-810



CTRA kembali ditutup menguat pada perdagangan kemarin berada di level IDR 765.

Harga tampak sedang bergerak melewati MA 200, di mana berpeluang melanjutkan penguatannya menuju resistance level IDR 790 hingga IDR 810. MACD berada pada kecenderungan menguat. Namun jika harga berbalik melemah dapat menguji support level IDR 720.

Rekomendasi : Trading Buy
Entry Level : 750-765
Take Profit : 790-810
Stop Loss : 715

Keterangan:

- Speculative Buy : Harga menyentuh support, harga dapat saja meneruskan pelemahan, tetapi berpotensi rebound jika harga gagal break support.
 - Buy : Harga bergerak rebound meninggalkan support level.
 - Trading Buy : Harga masih berpotensi naik, tetapi sudah mendekati resistance level.
 - Sell : Harga telah mencapai resistance level.
- Rekomendasi berdasarkan candlestick berlaku sampai 5 atau 8 hari ke depan (maksimal 10 hari), selebihnya dapat diartikan bahwa formasi candlestick gagal.

Research Division

| | | | | |
|-------------------|-------------------------------------------------------|----------------------------------|------------------|-------|
| Danny Eugene | Mining, Finance, Infrastructure | danny.eugene@megasekuritas.id | +62 21 7917 5599 | 62431 |
| Helen | Consumer Discretionary, Consumer Staples, Health Care | helen.vincentia@megasekuritas.id | +62 21 7917 5599 | 62425 |
| Fadlillah Qudsi | Technical Analyst | fadlillah.qudsi@megasekuritas.id | +62 21 7917 5599 | 62035 |
| Josua Lois Sinaga | Research Associate | josua.lois@megasekuritas.id | +62 21 7917 5599 | 62425 |

Retail Equity Sales Division

| | | | | |
|----------------------|----------------------------------|-----------------------------------|------------------|-------|
| Carsum Kusmady | Head of Sales, Trading & Dealing | carsum.kusmady@megasekuritas.id | +62 21 7917 5599 | 62038 |
| Andri Sumarno | Retail Equity Sales | andri@megasekuritas.id | +62 21 7917 5599 | 62045 |
| Andrie Zainal Zen | Retail Equity Sales | andrie.zainal@megasekuritas.id | +62 21 7917 5599 | 62048 |
| Brema Setyawan | Retail Equity Sales | brema.setyawan@megasekuritas.id | +62 21 7917 5599 | 62126 |
| Dewi Suryani | Retail Equity Sales | dewi.suryani@megasekuritas.id | +62 21 7917 5599 | 62441 |
| Ety Sulistyowati | Retail Equity Sales | ety.sulistyowati@megasekuritas.id | +62 21 7917 5599 | 62408 |
| Fadel Muhammad Iqbal | Retail Equity Sales | fadel@megasekuritas.id | +62 21 7917 5599 | 62164 |
| Syaifathir Muhamad | Retail Equity Sales | fathir@megasekuritas.id | +62 21 7917 5599 | 62179 |

Corporate Equity Division

| | | | | |
|-----------|----------------------------|----------------------------|------------------|-------|
| Widianita | Marketing Equity Corporate | widianita@megasekuritas.id | +62 21 7917 5599 | 62439 |
|-----------|----------------------------|----------------------------|------------------|-------|

Fixed Income Sales & Trading

Tel. +62 7917 5559-62 Fax. +62 21 7917 5965

Investment Banking

Tel. +62 21 7917 5599 Fax. +62 21 7919 3900

PT. Mega Capital Sekuritas
 Menara Bank Mega Lt. 2
 Jl. Kapt P. Tendean, Kav 12-14 A
 Jakarta Selatan 12790

DISCLAIMER

This Document is for information only and for the use of the recipient. It is not to be reproduced or copied or made available to others. Under no circumstances is it to be considered as an offer to sell or solicitation to buy any security. Any recommendation contained in this report may not be suitable for all investors and strictly a personal view and should not be used as a sole judgment for investment. Moreover, although the information contained herein has been obtained from sources believed to be reliable, its accuracy, completeness and reliability cannot be guaranteed. All rights reserved by PT Mega Capital Sekuritas.