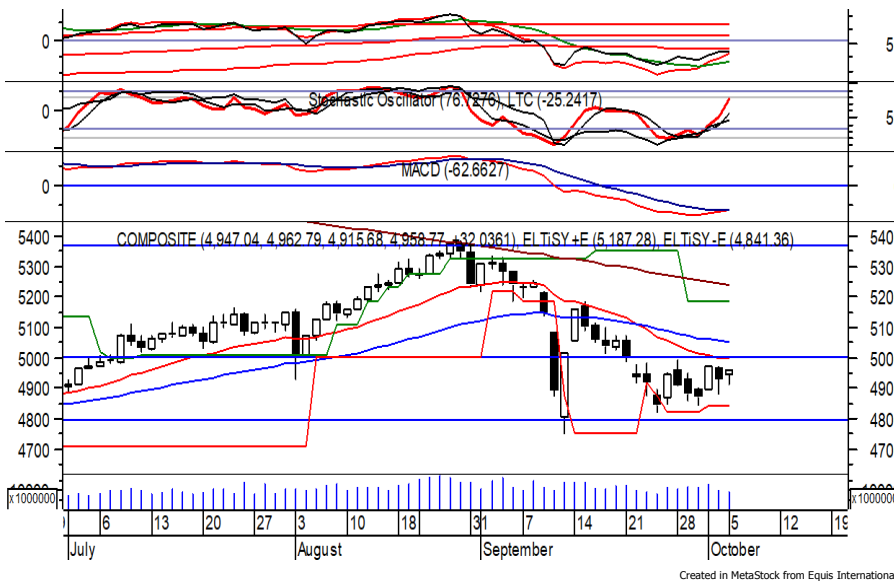


Indeks Harga Saham Gabungan (IHSG)

Range : 4,900 — 5,000



IHSG pada perdagangan kemarin ditutup menguat berada di level 4,958.

Indeks berpeluang untuk melanjutkan penguatannya dan bergerak menuju level psikologis di 5,000 hingga 5,060.

MACD yang mengindikasikan terjadinya golden cross memberikan peluang untuk menguat. Namun jika indeks berbalik melemah dapat menuju support level 4,900. Hari ini diperkirakan indeks kembali fluktuatif, cenderung menguat terbatas.

| Level | Support | Resistance |
|-------|---------|------------|
| I | 4,900 | 5,000 |
| II | 4,865 | 5,060 |
| III | 4,805 | 5,100 |

| Top Active | | | Top Foreign Buy | | | Top Foreign Sell | | | Top Leading | | |
|------------|-------|--------|-----------------|-------|-------------|------------------|-------|-------------|--------------------|---------|---------|
| Code | Close | Freq | Code | Close | Volume | Code | Close | Volume | Code | IDX Pts | Chg (%) |
| BMTR | 212 | 38,439 | ROTI | 1,215 | 371,600,100 | SMRA | 555 | -36,524,100 | HMSP | 6.8 | 4.6 |
| JSKY | 300 | 26,107 | BULL | 296 | 78,946,500 | TLKM | 2,650 | -35,879,400 | BBRI | 6.6 | 1.9 |
| JAST | 130 | 22,509 | DMAS | 228 | 14,521,800 | TBIG | 1,330 | -24,522,700 | BMRI | 6.2 | 2.9 |
| PURA | 132 | 18,922 | LPKR | 123 | 9,446,600 | BMTR | 212 | -20,842,000 | GGRM | 2.9 | 4.2 |
| BRIS | 840 | 17,107 | MDKA | 1,690 | 8,038,600 | ADRO | 1,125 | -17,021,600 | TPIA | 2.8 | 2.3 |
| TLKM | 2,650 | 12,634 | PWON | 344 | 4,422,300 | TOWR | 1,035 | -14,581,600 | Top Lagging | | |
| PURE | 346 | 12,580 | BMRI | 5,350 | 3,718,100 | MNCN | 725 | -13,859,000 | Code | IDX Pts | Chg (%) |
| BBRI | 3,160 | 11,690 | LINK | 2,400 | 2,246,800 | HEAL | 3,220 | -13,356,700 | POLL | -3.5 | -4.7 |
| TOWR | 1,035 | 11,174 | MEDC | 338 | 1,771,300 | BBRI | 3,160 | -12,434,000 | TLKM | -2.7 | -1.1 |
| MDKA | 1,690 | 9,767 | NATO | 478 | 1,632,300 | BJTM | 515 | -10,185,900 | UNTR | -1.2 | -1.5 |
| | | | | | | | | | ASII | -1.1 | -0.7 |
| | | | | | | | | | SOHO | -0.6 | -6.8 |

PT. Erajaya Swasembada, Tbk. (ERAA) β :

2.04

Price :

1,530

TP: 1,570-1,600



ERAA mampu ditutup menguat pada perdagangan kemarin berada di level IDR 1,530.

Harga tampak sedang mencoba bertahan di atas MA 200, di mana berpeluang melanjutkan penguatannya dan bergerak menuju resistance level IDR 1,570 hingga IDR 1,600. Stochastic berada di wilayah netral dengan kecenderungan menguat. Kecuali harga melemah di bawah IDR 1,480.

Rekomendasi : Buy on Weakness
Entry Level : 1,500-1,520
Take Profit : 1,570-1,600
Stop Loss : 1,470/1,450

PT. Indofood Sukses Makmur, Tbk.

(INDF) β :

0.83

Price : 7,100

TP: 7,325-7,400



INDF mampu ditutup menguat pada perdagangan kemarin berada di level IDR 7,100.

Harga tampak sedang melanjutkan konsolidasi yang terjadi selama lebih dari sepekan terakhir, dan mencoba bertahan di atas MA 200, di mana berpeluang berlanjut menuju resistance level IDR 7,325 hingga IDR 7,400.

Stochastic yang bergerak meninggalkan oversold memberikan peluang menguat

- Rekomendasi** : Buy on Weakness
- Entry Level** : 7,000-7,075
- Take Profit** : 7,325-7,400
- Stop Loss** : 6,875

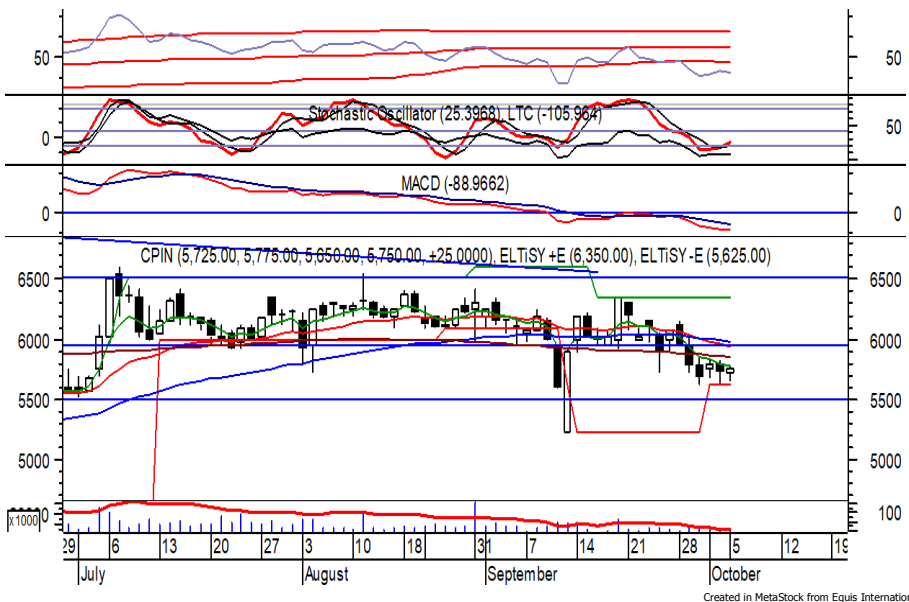
PT. Charoen Pokphand Indonesia, Tbk.

(CPIN) β :

0.85

Price : 5,750

TP: 5,900-6,000



CPIN pada perdagangan sebelumnya ditutup menguat berada di level IDR 5,750.

Harga tampak sedang mengalami konsolidasi dan mencoba bertahan di atas 5,625, di mana berpeluang berlanjut menuju resistance level IDR 5,900 hingga IDR 6,000.

Stochastic yang mengalami bullish crossover memberikan peluang terjadinya penguatan. Kecuali melemah hingga di bawah IDR 5,500.

- Rekomendasi** : Buy on Weakness
- Entry Level** : 5,625-5,725
- Take Profit** : 5,900-6,000
- Stop Loss** : 5,475

PT. Bank Mandiri (Persero), Tbk.

(BMRI) β :

1.57 Price :

5,350

TP:

5,525-5,625



Created in MetaStock from Equis International

BMRI ditutup menguat pada perdagangan sebelumnya berada di IDR 5,350.

Harga berpotensi melanjutkan penguatannya dan bergerak menuju resistance level yang berada di IDR 5,525 hingga IDR 5,625.

MACD yang mengindikasikan terjadinya golden cross memberikan peluang untuk menguat. Kecuali harga berbalik melemah di bawah IDR 5,150.

- Rekomendasi** : **Speculative Buy**
- Entry Level** : **5,250-5,350**
- Take Profit** : **5,525-5,625**
- Stop Loss** : **5,125**

PT. Merdeka Copper Gold, Tbk.

(MDKA) β :

0.47 Price :

1,690

TP:

1,740-1,775



Created in MetaStock from Equis International

Sempat bergerak melemah pada perdagangan sebelumnya, MDKA akhirnya ditutup bertahan di level IDR 1,690.

Harga tampak sedang mencoba bertahan di atas EMA 50, di mana berpotensi menguat menuju resistance level IDR 1,740 hingga IDR 1,775.

MACD yang mengalami golden cross memberikan peluang untuk menguat. Kecuali berbalik melemah di bawah IDR 1,650.

- Rekomendasi** : **Speculative Buy**
- Entry Level** : **1,670-1,690**
- Take Profit** : **1,740-1,775**
- Stop Loss** : **1,640/1,595**

Keterangan:

- Speculative Buy** : Harga menyentuh support, harga dapat saja meneruskan pelemahan, tetapi berpotensi rebound jika harga gagal break support.
 - Buy** : Harga bergerak rebound meninggalkan support level.
 - Trading Buy** : Harga masih berpotensi naik, tetapi sudah mendekati resistance level.
 - Sell** : Harga telah mencapai resistance level.
- Rekomendasi berdasarkan candlestick berlaku sampai 5 atau 8 hari ke depan (maksimal 10 hari), selebihnya dapat diartikan bahwa formasi candlestick gagal.

Research Division

| | | | | |
|-------------------|---|----------------------------------|------------------|-------|
| Danny Eugene | Mining, Finance, Infrastructure | danny.eugene@megasekuritas.id | +62 21 7917 5599 | 62431 |
| Helen | Consumer Discretionary, Consumer Staples, Health Care | helen.vincentia@megasekuritas.id | +62 21 7917 5599 | 62425 |
| Fadlillah Qudsi | Technical Analyst | fadlillah.qudsi@megasekuritas.id | +62 21 7917 5599 | 62035 |
| Josua Lois Sinaga | Research Associate | josua.lois@megasekuritas.id | +62 21 7917 5599 | 62425 |

Retail Equity Sales Division

| | | | | |
|----------------------|----------------------------------|-----------------------------------|------------------|-------|
| Carsum Kusmady | Head of Sales, Trading & Dealing | carsum.kusmady@megasekuritas.id | +62 21 7917 5599 | 62038 |
| Andri Sumarno | Retail Equity Sales | andri@megasekuritas.id | +62 21 7917 5599 | 62045 |
| Andrie Zainal Zen | Retail Equity Sales | andrie.zainal@megasekuritas.id | +62 21 7917 5599 | 62048 |
| Brema Setyawan | Retail Equity Sales | brema.setyawan@megasekuritas.id | +62 21 7917 5599 | 62126 |
| Dewi Suryani | Retail Equity Sales | dewi.suryani@megasekuritas.id | +62 21 7917 5599 | 62441 |
| Ety Sulistyowati | Retail Equity Sales | ety.sulistyowati@megasekuritas.id | +62 21 7917 5599 | 62408 |
| Fadel Muhammad Iqbal | Retail Equity Sales | fadel@megasekuritas.id | +62 21 7917 5599 | 62164 |
| Syaifathir Muhamad | Retail Equity Sales | fathir@megasekuritas.id | +62 21 7917 5599 | 62179 |

Corporate Equity Division

| | | | | |
|-----------|----------------------------|----------------------------|------------------|-------|
| Widianita | Marketing Equity Corporate | widianita@megasekuritas.id | +62 21 7917 5599 | 62439 |
|-----------|----------------------------|----------------------------|------------------|-------|

Fixed Income Sales & Trading

Tel. +62 7917 5559-62 Fax. +62 21 7917 5965

Investment Banking

Tel. +62 21 7917 5599 Fax. +62 21 7919 3900

PT. Mega Capital Sekuritas
 Menara Bank Mega Lt. 2
 Jl. Kapt P. Tendean, Kav 12-14 A
 Jakarta Selatan 12790

DISCLAIMER

This Document is for information only and for the use of the recipient. It is not to be reproduced or copied or made available to others. Under no circumstances is it to be considered as an offer to sell or solicitation to buy any security. Any recommendation contained in this report may not be suitable for all investors and strictly a personal view and should not be used as a sole judgment for investment. Moreover, although the information contained herein has been obtained from sources believed to be reliable, its accuracy, completeness and reliability cannot be guaranteed. All rights reserved by PT Mega Capital Sekuritas.