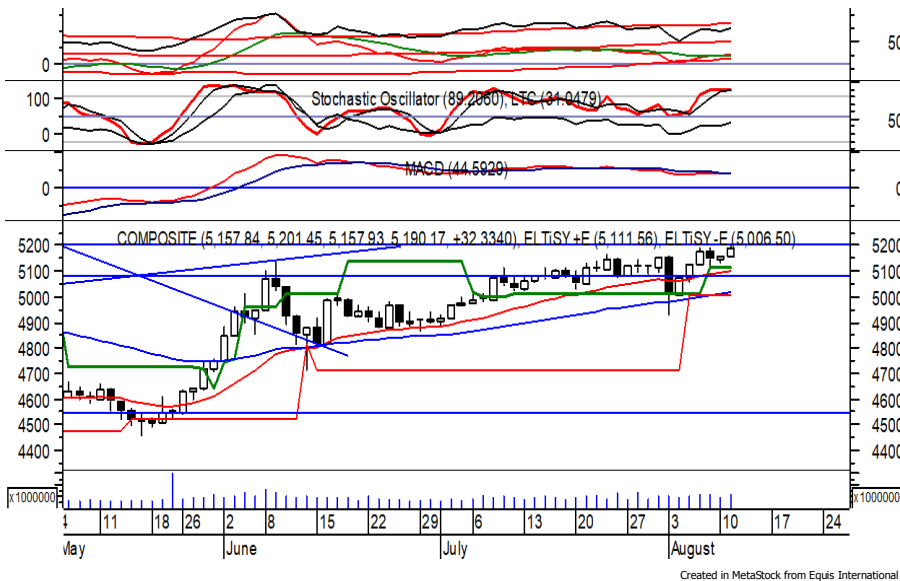


Indeks Harga Saham Gabungan (IHSG)

(IHSG)

Range : 5,140 — 5,265



IHSG kembali ditutup menguat pada perdagangan kemarin berada di level 5,190.

Indeks tampak sedang mencoba bertahan di atas support level 5,150, di mana berpeluang melanjutkan penguatannya menuju resistance level 5,265.

Akan tetapi indikasi bearish crossover pada stochastic berpotensi membawa indeks terkoreksi menuju support level 5,140. Hari ini diperkirakan indeks bergerak fluktuatif dengan kecenderungan menguat terbatas.

Level	Support	Resistance
I	5,140	5,265
II	5,080	5,300
III	5,000	5,355

Top Active			Top Foreign Buy			Top Foreign Sell			Top Leading		
Code	Close	Freq	Code	Close	Volume	Code	Close	Volume	Code	IDX Pts	Chg (%)
TLKM	2,930	31,436	MEDC	565	49,528,600	BMTR	212	-700,199,410	BBRI	7.3	3.0
FREN	130	22,651	BBRI	3,190	16,637,500	FREN	130	-222,896,100	BBCA	6.6	1.9
BBRI	3,190	22,028	BBNI	4,780	16,026,900	TLKM	2,930	-102,377,300	BRPT	4.6	6.3
MEDC	565	20,857	PURA	129	15,421,500	TOWR	1,070	-74,469,900	HMSP	4.2	2.4
PURA	129	17,552	ANTM	800	13,325,700	PWON	394	-46,711,700	Top Lagging		
BBNI	4,780	17,485	IPTV	310	7,373,500	SMRA	570	-30,480,900	Code	IDX Pts	Chg (%)
TOWR	1,070	16,723	BBTN	1,410	5,734,300	RAIS	625	-26,241,800	TLKM	-3.6	-1.4
MDKA	1,915	15,593	WSBP	173	5,226,500	BFIN	358	-22,811,900	UNVR	-1.7	-0.6
KAEF	3,350	15,168	CARE	354	4,771,600	PGAS	1,210	-17,536,900	UNTR	-1.7	-2.0
DOID	286	14,463	ARNA	440	4,468,800	ASRI	118	-14,075,100	INKP	-1.6	-3.4
									MDKA	-1.3	-3.3

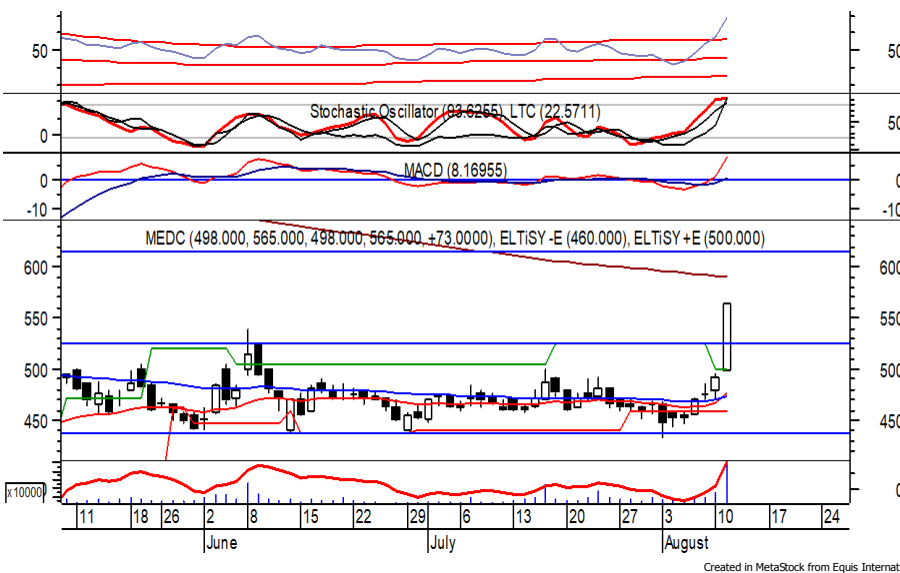
PT. Medco Energi Internasional, Tbk.

(MEDC) β :

2.32 Price :

565 TP:

590-615



MEDC pada perdagangan kemarin kembali ditutup menguat berada di level IDR 565.

Harga tampak sedang bergerak melewati resistance level IDR 525, di mana berpeluang berlanjut menuju level berikutnya di IDR 590 hingga IDR 615.

Namun stochastic yang mengalami overbought berpotensi membawa harga terkoreksi menguji IDR 525.

Rekomendasi : Trading Buy
Entry Level : 545-565
Take Profit : 590-615
Stop Loss : 520

PT. AKR Corporindo, Tbk.

(AKRA) β :

1.72

Price : 2,870

TP: 2,940-3,000



AKRA pada perdagangan sebelumnya ditutup menguat berada di level IDR 2,870.

Harga tampak sedang mengalami konsolidasi dan mencoba bertahan di atas IDR 2,740, di mana berpeluang menuju resistance level IDR 2,940 hingga IDR 3,000.

Stochastic yang mengalami bullish crossover memberikan peluang untuk menguat.

Rekomendasi : Speculative Buy
Entry Level : 2,800-2,870
Take Profit : 2,940-3,000
Stop Loss : 2,730

PT. Wijaya Karya (Persero), Tbk.

(WIKA) β :

2.26

Price : 1,180

TP: 1,225-1,245



WIKA ditutup menguat pada perdagangan kemarin berada di level IDR 1,180.

Harga tampak sedang bergerak melewati resistance level IDR 1,150, di mana berpeluang berlanjut menguat menuju resistance level IDR 1,225 hingga IDR 1,245.

Stochastic berada di wilayah netral dengan kecenderungan menguat. Kecuali harga berbalik melemah hingga di bawah IDR 1,135.

Rekomendasi : Speculative Buy
Entry Level : 1,160-1,180
Take Profit : 1,225-1,245
Stop Loss : 1,130

PT. Pembangunan Perumahan (Persero), Tbk. (PTPP) β : 2.66 Price : 985 TP: 1,035-1,070



PTPP pada perdagangan sebelumnya ditutup menguat berada di level IDR 985.

Harga tampak sedang mencoba untuk bertahan di atas EMA 50 dan bergerak melewati resistance level IDR 960, di mana berpeluang berlanjut menuju resistance level IDR 1,035 hingga IDR 1,070.

Kecuali harga berbalik melemah hingga di bawah IDR 935.

Rekomendasi : Speculative Buy
Entry Level : 960-985
Take Profit : 1,035-1,070
Stop Loss : 930

PT. Indofood CBP Sukses Makmur, Tbk. (ICBP) β : 0.48 Price : 10,200 TP: 9,900-9,700



ICBP pada perdagangan sebelumnya ditutup menguat tipis berada di IDR 10,200.

Harga tampak belum mampu melewati resistance level IDR 10,600, di mana berpotensi mengalami koreksi menuju support level IDR 9,900 hingga IDR 9,700.

Stochastic yang mengalami bearish crossover berpotensi membawa harga melemah.

Rekomendasi : Sell on Strength
Exit Level : 10,400-10,250
Bottom Fishing : 9,900-9,700
Buy Back : 10,700

Keterangan:

- Speculative Buy : Harga menyentuh support, harga dapat saja meneruskan pelemahan, tetapi berpotensi rebound jika harga gagal break support.
 - Buy : Harga bergerak rebound meninggalkan support level.
 - Trading Buy : Harga masih berpotensi naik, tetapi sudah mendekati resistance level.
 - Sell : Harga telah mencapai resistance level.
- Rekomendasi berdasarkan candlestick berlaku sampai 5 atau 8 hari ke depan (maksimal 10 hari), selebihnya dapat diartikan bahwa formasi candlestick gagal.

Research Division

Danny Eugene	Mining, Finance, Infrastructure	danny.eugene@megasekuritas.id	+62 21 7917 5599	62431
Helen	Consumer Discretionary, Consumer Staples, Health Care	helen.vincentia@megasekuritas.id	+62 21 7917 5599	62425
Fadlillah Qudsi	Technical Analyst	fadlillah.qudsi@megasekuritas.id	+62 21 7917 5599	62035

Retail Equity Sales Division

Carsum Kusmady	Head of Sales, Trading & Dealing	carsum.kusmady@megasekuritas.id	+62 21 7917 5599	62038
Andri Sumarno	Retail Equity Sales	andri@megasekuritas.id	+62 21 7917 5599	62045
Andrie Zainal Zen	Retail Equity Sales	andrie.zainal@megasekuritas.id	+62 21 7917 5599	62048
Brema Setyawan	Retail Equity Sales	brema.setyawan@megasekuritas.id	+62 21 7917 5599	62126
Dewi Suryani	Retail Equity Sales	dewi.suryani@megasekuritas.id	+62 21 7917 5599	62441
Ety Sulistyowati	Retail Equity Sales	ety.sulistyowati@megasekuritas.id	+62 21 7917 5599	62408
Fadel Muhammad Iqbal	Retail Equity Sales	fadel@megasekuritas.id	+62 21 7917 5599	62164
Syaifathir Muhamad	Retail Equity Sales	fathir@megasekuritas.id	+62 21 7917 5599	62179

Corporate Equity Division

Widianita	Marketing Equity Corporate	widianita@megasekuritas.id	+62 21 7917 5599	62439
-----------	----------------------------	----------------------------	------------------	-------

Fixed Income Sales & Trading

Tel. +62 7917 5559-62 Fax. +62 21 7917 5965

Investment Banking

Tel. +62 21 7917 5599 Fax. +62 21 7919 3900

PT. Mega Capital Sekuritas
 Menara Bank Mega Lt. 2
 Jl. Kapt P. Tendean, Kav 12-14 A
 Jakarta Selatan 12790

DISCLAIMER

This Document is for information only and for the use of the recipient. It is not to be reproduced or copied or made available to others. Under no circumstances is it to be considered as an offer to sell or solicitation to buy any security. Any recommendation contained in this report may not be suitable for all investors and strictly a personal view and should not be used as a sole judgment for investment. Moreover, although the information contained herein has been obtained from sources believed to be reliable, its accuracy, completeness and reliability cannot be guaranteed. All rights reserved by PT Mega Capital Sekuritas.