

Indeks Harga Saham Gabungan (IHSG)

Range : 4,965 — 5,100



IHSG ditutup melemah pada perdagangan akhir pekan kemarin berada di level 5,031.

Indeks berpotensi melanjutkan pelemahannya dan bergerak menguji level psikologis 5,000 hingga 4,965.

Stochastic yang mengalami bearish crossover berpotensi membawa indeks melemah. Namun jika indeks berbalik menguat dapat menguji resistance level 5,100.

Hari ini diperkirakan indeks bergerak fluktuatif cenderung melemah terbatas.

Level	Support	Resistance
I	4,965	5,100
II	4,925	5,140
III	4,855	5,200

Top Active			Top Foreign Buy			Top Foreign Sell			Top Leading		
Code	Close	Freq	Code	Close	Volume	Code	Close	Volume	Code	IDX Pts	Chg (%)
BRIS	474	54,960	BSIM	520	19,982,200	WSBP	202	-62,152,000	BBCA	10.5	1.6
KRAS	350	30,121	MDKA	1,485	12,953,400	PWON	406	-29,935,700	BNGA	1.6	9.9
BCAP	159	21,630	BBRI	3,110	8,655,700	SMRA	595	-19,008,500	BYAN	1.4	3.8
ENVY	133	17,205	SCMA	1,235	7,328,600	KPIG	111	-17,006,200	LIFE	0.5	4.2
BBRI	3,110	15,503	DOID	157	6,681,800	WSKT	715	-14,858,300	TPIA	0.4	0.4
TOWR	1,065	14,853	TOWR	1,065	6,624,000	BBTN	1,295	-14,700,900	Top Lagging		
BNGA	830	14,606	BULL	326	6,370,700	BSDE	745	-10,982,100	Code	IDX Pts	Chg (%)
BULL	326	12,771	ADRO	1,085	5,691,300	ASRI	130	-9,930,600	BBRI	-3.2	-1.0
TLKM	3,110	11,288	ASII	4,830	4,535,000	ENVY	133	-8,419,000	BMRI	-3.0	-1.4
PWON	406	10,294	CPIN	6,000	4,308,975	TLKM	3,110	-7,268,805	SMMA	-2.7	-2.8
									ASII	-2.4	-1.4
									KLBF	-2.4	-3.9

PT. Surya Citra Media, Tbk.

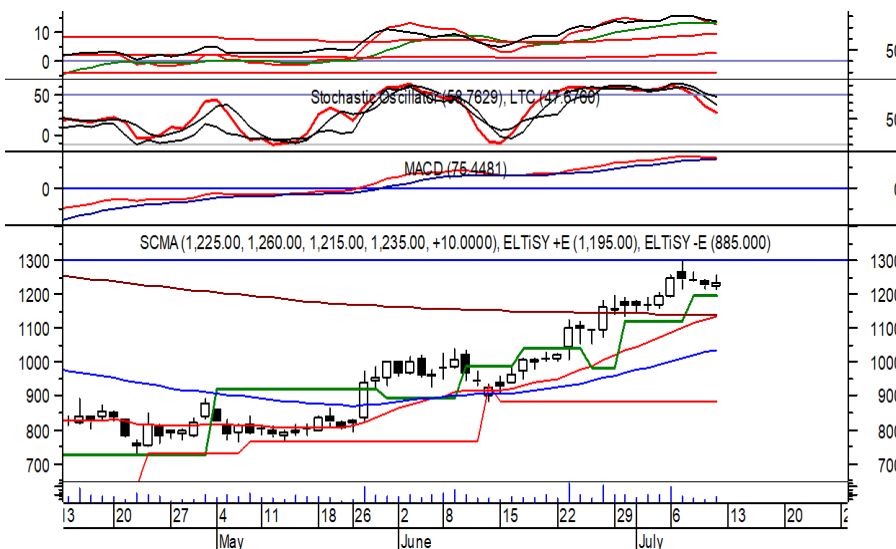
(SCMA) β :

1.60

Price :

1,235

TP: 1,265-1,300



SCMA mampu ditutup menguat pada perdagangan akhir pekan kemarin berada di level IDR 1,235.

Harga tampak sedang mencoba bertahan di atas support level IDR 1,195, di mana berpeluang melanjutkan penguatannya dan bergerak menuju resistance level IDR 1,265 hingga IDR 1,300.

Namun jika harga berbalik melemah berpotensi menguji hingga IDR 1,135.

Rekomendasi : Buy on Weakness
Entry Level : 1,195-1,215
Take Profit : 1,265-1,300
Stop Loss : 1,170

PT. United Tractors, Tbk.

(UNTR) β :

0.72

Price : 17,925

TP: 17,200-16,900



UNTR pada perdagangan sebelumnya ditutup melemah berada di level IDR 17,925.

Harga berpotensi melanjutkan pelemahannya setelah belum mampu melewati MA 200, di mana berpotensi menuju support level IDR 17,200 hingga IDR 16,900.

Stochastic yang mengalami bearish crossover berpotensi membawa harga melemah.

Rekomendasi : Sell on Strength
Exit Level : 18,450-18,300
Bottom Fishing : 17,200-16,900
Buy Back : 19,000

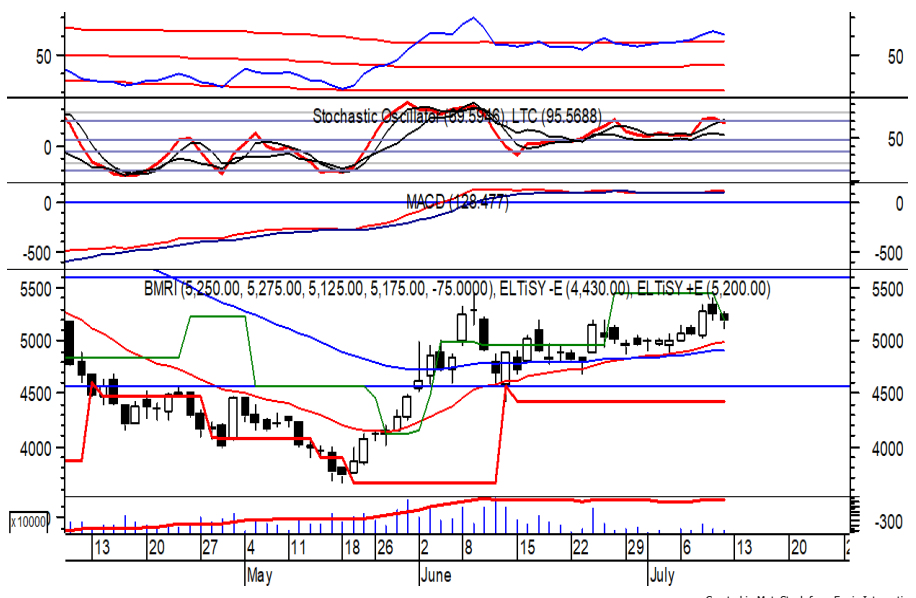
PT. Bank Mandiri (Persero), Tbk.

(BMRI) β :

1.47

Price : 5,175

TP: 5,350-5,450



BMRI kembali ditutup melemah pada perdagangan sebelumnya berada di IDR 5,175.

Harga berpotensi menguji support level IDR 5,000, yang jika mampu bertahan di (atas) level tersebut, berpotensi menguat menuju resistance level IDR 5,350 hingga IDR 5,450.

Golden cross yang terjadi pada EMA 20, memberikan peluang untuk menguat. Kecuali harga terus melemah hingga di bawah IDR 4,920.

Rekomendasi : Buy on Weakness
Entry Level : 5,000-5,100
Take Profit : 5,350-5,450
Stop Loss : 4,900

PT. Vale Indonesia, Tbk.

(INCO) β :

1.26

Price : 3,090

TP: 3,190-3,230



INCO pada perdagangan akhir pekan kemarin ditutup melemah berada di IDR 3,090.

Harga berpotensi menguji support level IDR 3,000, yang jika mampu bertahan di (atas) level tersebut berpotensi menguat menuju resistance level IDR 3,190 hingga IDR 3,230.

MACD cenderung menguat. Kecuali harga berbalik melemah hingga di bawah IDR 2,950.

Rekomendasi : Buy on Weakness
Entry Level : 3,000-3,050
Take Profit : 3,190-3,230
Stop Loss : 2,940

PT. Wijaya Karya (Persero), Tbk.

(WIKA) β :

2.19

Price : 1,240

TP: 1,290-1,320



WIKA ditutup melemah pada perdagangan sebelumnya berada di IDR 1,240.

Harga berpotensi menguji support level hingga IDR 1,195 dan berpotensi menguat jika mampu bertahan di (atas) level tersebut, di mana berpotensi menguat menuju resistance level IDR 1,290 hingga IDR 1,320.

Stochastic cenderung menguat. Kecuali harga terus melemah hingga di bawah IDR 1,150.

Rekomendasi : Buy on Weakness
Entry Level : 1,195-1,220
Take Profit : 1,290-1,320
Stop Loss : 1,140

Keterangan:

Speculative Buy : Harga menyentuh support, harga dapat saja meneruskan pelemahan, tetapi berpotensi rebound jika harga gagal break support.

Buy : Harga bergerak rebound meninggalkan support level.

Trading Buy : Harga masih berpotensi naik, tetapi sudah mendekati resistance level.

Sell : Harga telah mencapai resistance level.

Rekomendasi berdasarkan candlestick berlaku sampai 5 atau 8 hari ke depan (maksimal 10 hari), selebihnya dapat diartikan bahwa formasi candlestick gagal.

Research Division

Danny Eugene	Mining, Finance, Infrastructure	danny.eugene@megasekuritas.id	+62 21 7917 5599	62431
Helen	Consumer Discretionary, Consumer Staples, Health Care	helen.vincentia@megasekuritas.id	+62 21 7917 5599	62425
Edo Ardiansyah	Property, Trade, Basic Industry	edo.ardiansyah@megasekuritas.id	+62 21 7917 5599	62425
Fadlillah Qudsi	Technical Analyst	fadlillah.qudsi@megasekuritas.id	+62 21 7917 5599	62035

Retail Equity Sales Division

Carsum Kusmady	Head of Sales, Trading & Dealing	carsum.kusmady@megasekuritas.id	+62 21 7917 5599	62038
Andri Sumarno	Retail Equity Sales	andri@megasekuritas.id	+62 21 7917 5599	62045
Andrie Zainal Zen	Retail Equity Sales	andrie.zainal@megasekuritas.id	+62 21 7917 5599	62048
Brema Setyawan	Retail Equity Sales	brema.setyawan@megasekuritas.id	+62 21 7917 5599	62126
Dewi Suryani	Retail Equity Sales	dewi.suryani@megasekuritas.id	+62 21 7917 5599	62441
Ety Sulistyowati	Retail Equity Sales	ety.sulistyowati@megasekuritas.id	+62 21 7917 5599	62408
Fadel Muhammad Iqbal	Retail Equity Sales	fadel@megasekuritas.id	+62 21 7917 5599	62164
Syaifathir Muhamad	Retail Equity Sales	fathir@megasekuritas.id	+62 21 7917 5599	62179

Corporate Equity Division

Ratna Wijayanti	Corporate Equity Sales	ratna.wijayanti@megasekuritas.id	+62 21 7917 5599	62055
Widianita	Marketing Equity Corporate	widianita@megasekuritas.id	+62 21 7917 5599	62439

OLT Brokerage Dept

Yefri Indra	Head of OLT Brokerage	olt@megasekuritas.id	+62 21 7917 5599	62168
-------------	-----------------------	----------------------	------------------	-------

Fixed Income Sales & Trading

Tel. +62 7917 5559-62 Fax. +62 21 7917 5965

Investment Banking

Tel. +62 21 7917 5599 Fax. +62 21 7919 3900

PT. Mega Capital Sekuritas
 Menara Bank Mega Lt. 2
 Jl. Kapt P. Tendean, Kav 12-14 A
 Jakarta Selatan 12790

DISCLAIMER

This Document is for information only and for the use of the recipient. It is not to be reproduced or copied or made available to others. Under no circumstances is it to be considered as an offer to sell or solicitation to buy any security. Any recommendation contained in this report may not be suitable for all investors and strictly a personal view and should not be used as a sole judgment for investment. Moreover, although the information contained herein has been obtained from sources believed to be reliable, its accuracy, completeness and reliability cannot be guaranteed. All rights reserved by PT Mega Capital Sekuritas.