

Indeks Harga Saham Gabungan (IHSG)

Range : 4,395 — 4,695



IHSG mampu ditutup menguat pada perdagangan sebelumnya berada di level 4,531.

Indeks tampak sedang mengalami konsolidasi dan berpotensi berlanjut dengan bergerak menguji support level 4,395 hingga 4,300. Stochastic yang mengalami kejenuhan terhadap aksi beli berpotensi membawa indeks melemah. Namun jika berbalik menguat dapat menguji 4,695. Hari ini diperkirakan indeks kembali fluktuatif dengan kecenderungan melemah.

Level	Support	Resistance
I	4,395	4,695
II	4,300	4,765
III	4,200	4,875

Top Active			Top Foreign Buy			Top Foreign Sell			Top Leading		
Code	Close	Freq	Code	Close	Volume	Code	Close	Volume	Code	IDX Pts	Chg (%)
BBRI	2,870	32,414	BMRI	4,750	16,648,300	BBRI	2,870	-98,549,700	HMSP	12.1	8.5
REAL	61	19,833	BBTN	845	9,488,600	MAPI	454	-29,304,300	TPIA	7.3	9.0
MNCN	1,000	14,591	WEGE	164	8,986,000	TLKM	3,130	-24,214,500	BRPT	6.5	11.4
PAMG	107	13,669	ASII	3,930	5,352,500	TOWR	665	-20,920,100	GGRM	6.5	9.8
BBCA	27,050	13,658	KPIG	119	5,158,300	KLBF	1,285	-17,239,000	ASII	5.6	4.2
TELE	140	11,891	BBNI	3,850	4,440,800	PGAS	800	-16,191,200	Top Lagging		
PURA	75	11,539	MNCN	1,000	4,314,200	BRPT	830	-13,659,700	Code	IDX Pts	Chg (%)
ISSP	146	11,531	ADRO	1,040	4,292,900	CTRA	412	-11,759,800	BBCA	-7.4	-1.3
TLKM	3,130	11,299	HMSP	1,535	4,008,000	SMRA	356	-11,390,800	BBRI	-6.3	-2.0
BBNI	3,850	11,206	WSBP	136	3,944,900	ACES	1,230	-10,156,166	POLL	-5.0	-6.9
									INTP	-1.1	-2.9
									SMGR	-1.0	-2.6

PT. HM. Sampoerna, Tbk.

(HMSP) β :

1.10

Price :

1,535

TP:

1,640-

1,720



HMSP pada perdagangan kemarin ditutup menguat berada di level IDR 1,535.

Harga tampak sedang bergerak melewati EMA 20, di mana berpeluang melanjutkan penguatannya menuju resistance level IDR 1,640 hingga IDR 1,720.

MACD yang mengalami golden cross memberikan peluang terjadinya penguatan.

Rekomendasi : Speculative Buy
Entry Level : 1,475-1,535
Take Profit : 1,640-1,720
Stop Loss : 1,600

PT. Ace Hardware Indonesia, Tbk.

(ACES) β :

1.14 Price : 1,230

BF: 1,140-1,100



ACES ditutup melemah pada perdagangan sebelumnya berada di IDR 1,230.

Harga tampak belum mampu melewati resistance level IDR 1,350, di mana berpotensi berlanjut melemah menuju support level IDR 1,140 hingga IDR 1,100. Stochastic yang mengalami bearish crossover dan bergerak meninggalkan wilayah overbought berpotensi membawa harga melemah.

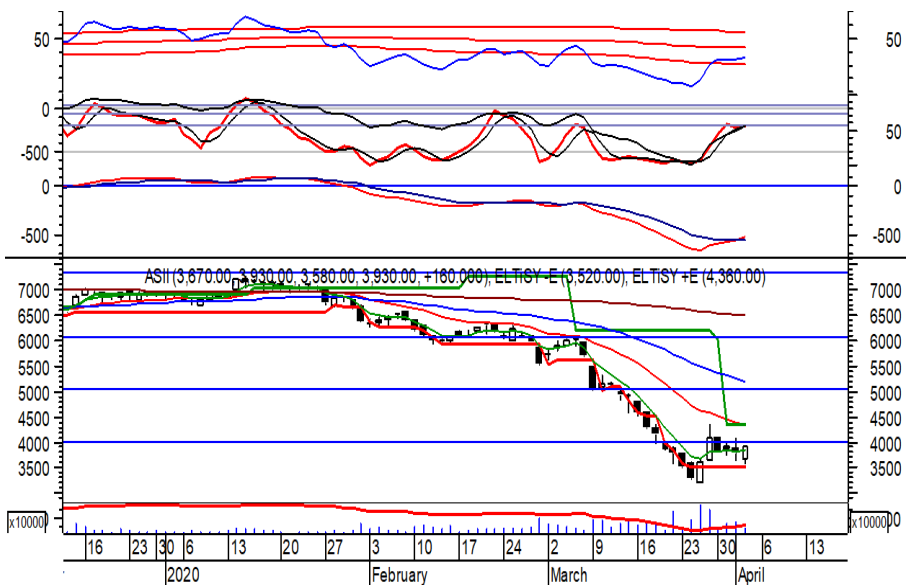
- Rekomendasi : Sell on Strength
- Exit Level : 1,280-1,250
- Bottom Fishing : 1,140-1,100
- Buy Back : 1,320/1,360

PT. Astra International, Tbk.

(ASII) β :

1.51 Price : 3,930

TP: 4,270-4,360



ASII pada perdagangan kemarin mampu ditutup menguat berada di level IDR 3,930.

Harga tampak sedang mengalami konsolidasi dan mencoba bertahan di atas support level IDR 3,520, di mana berpeluang berlanjut menguat menuju resistance level IDR 4,270 hingga IDR 4,360.

MACD yang mengalami golden cross memberikan peluang terjadinya penguatan.

- Rekomendasi : Buy on Weakness
- Entry Level : 3,850-3,900
- Take Profit : 4,270-4,360
- Stop Loss : 3,780/3,500

PT. Telekomunikasi Indonesia (Persero), Tbk.

(TLKM) β : 0.58 Price : 3,130 BF: 2,900-2,810



TLKM pada perdagangan sebelumnya ditutup menguat berada di level IDR 3,130.

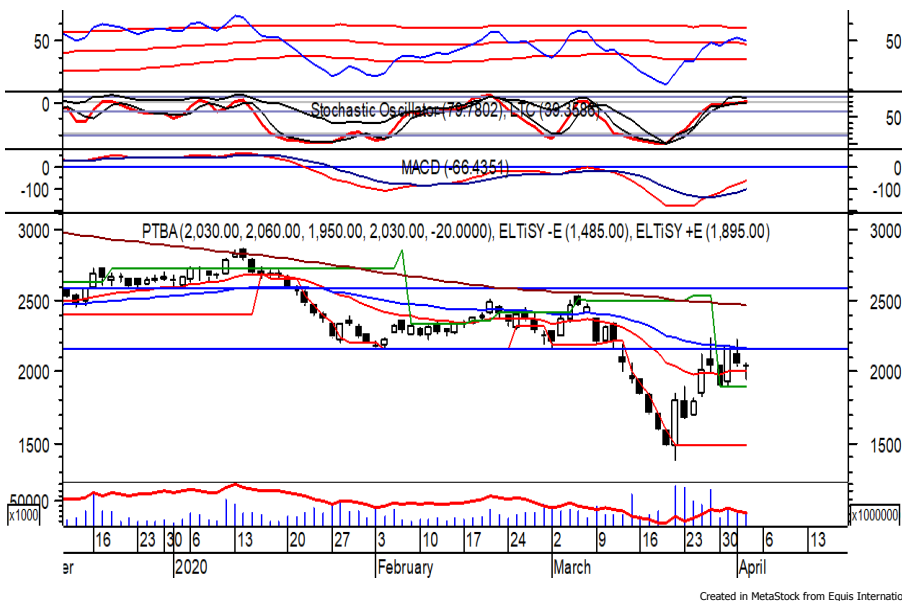
Harga tampak belum mampu melewati resistance level yang berada di IDR 3,260, di mana berpotensi mengalami koreksi dan bergerak menuju support level IDR 2,900 hingga IDR 2,810.

Stochastic yang mengalami bearish crossover di wilayah overbought berpotensi membawa harga melemah.

- Rekomendasi** : Sell on Strength
- Exit Level** : 3,230-3,180
- Bottom Fishing** : 2,900-2,810
- Buy Back** : 3,310

PT. Bukit Asam, Tbk.

(PTBA) β : 1.26 Price : 2,030 BF: 1,900-1,830



PTBA ditutup melemah pada perdagangan sebelumnya berada di IDR 2,030.

Harga berpotensi melanjutkan pelemahannya setelah belum mampu melewati resistance level IDR 2,150, di mana berpotensi menuju support level IDR 1,900 hingga IDR 1,830.

Stochastic mengindikasikan terjadinya bearish crossover dan berpotensi membawa harga melemah.

- Rekomendasi** : Sell on Strength
- Exit Level** : 2,100-2,050
- Bottom Fishing** : 1,900-1,830
- Buy Back** : 2,170

Keterangan:

- Speculative Buy** : Harga menyentuh support, harga dapat saja meneruskan pelemahan, tetapi berpotensi rebound jika harga gagal break support.
 - Buy** : Harga bergerak rebound meninggalkan support level.
 - Trading Buy** : Harga masih berpotensi naik, tetapi sudah mendekati resistance level.
 - Sell** : Harga telah mencapai resistance level.
- Rekomendasi berdasarkan candlestick berlaku sampai 5 atau 8 hari ke depan (maksimal 10 hari), selebihnya dapat diartikan bahwa formasi candlestick gagal.

Research Division

Danny Eugene	Mining, Finance, Infrastructure	danny.eugene@megasekuritas.id	+62 21 7917 5599	62431
Helen	Consumer Discretionary, Consumer Staples, Health Care	helen.vincentia@megasekuritas.id	+62 21 7917 5599	62425
Edo Ardiansyah	Property, Trade, Basic Industry	edo.ardiansyah@megasekuritas.id	+62 21 7917 5599	62425
Fadlillah Qudsi	Technical Analyst	fadlillah.qudsi@megasekuritas.id	+62 21 7917 5599	62035

Retail Equity Sales Division

Carsum Kusmady	Head of Sales, Trading & Dealing	carsum.kusmady@megasekuritas.id	+62 21 7917 5599	62038
Andri Sumarno	Retail Equity Sales	andri@megasekuritas.id	+62 21 7917 5599	62045
Andrie Zainal Zen	Retail Equity Sales	andrie.zainal@megasekuritas.id	+62 21 7917 5599	62048
Brema Setyawan	Retail Equity Sales	brema.setyawan@megasekuritas.id	+62 21 7917 5599	62126
Dewi Suryani	Retail Equity Sales	dewi.suryani@megasekuritas.id	+62 21 7917 5599	62441
Ety Sulistyowati	Retail Equity Sales	ety.sulistyowati@megasekuritas.id	+62 21 7917 5599	62408
Fadel Muhammad Iqbal	Retail Equity Sales	fadel@megasekuritas.id	+62 21 7917 5599	62164
Syaifathir Muhamad	Retail Equity Sales	fathir@megasekuritas.id	+62 21 7917 5599	62179

Corporate Equity Division

Ratna Wijayanti	Corporate Equity Sales	ratna.wijayanti@megasekuritas.id	+62 21 7917 5599	62055
Widianita	Marketing Equity Corporate	widianita@megasekuritas.id	+62 21 7917 5599	62439

OLT Brokerage Dept

Yefri Indra	Head of OLT Brokerage	olt@megasekuritas.id	+62 21 7917 5599	62168
-------------	-----------------------	----------------------	------------------	-------

Fixed Income Sales & Trading

Tel. +62 7917 5559-62 Fax. +62 21 7917 5965

Investment Banking

Tel. +62 21 7917 5599 Fax. +62 21 7919 3900

PT. Mega Capital Sekuritas
 Menara Bank Mega Lt. 2
 Jl. Kapt P. Tendean, Kav 12-14 A
 Jakarta Selatan 12790

DISCLAIMER

This Document is for information only and for the use of the recipient. It is not to be reproduced or copied or made available to others. Under no circumstances is it to be considered as an offer to sell or solicitation to buy any security. Any recommendation contained in this report may not be suitable for all investors and strictly a personal view and should not be used as a sole judgment for investment. Moreover, although the information contained herein has been obtained from sources believed to be reliable, its accuracy, completeness and reliability cannot be guaranteed. All rights reserved by PT Mega Capital Sekuritas.