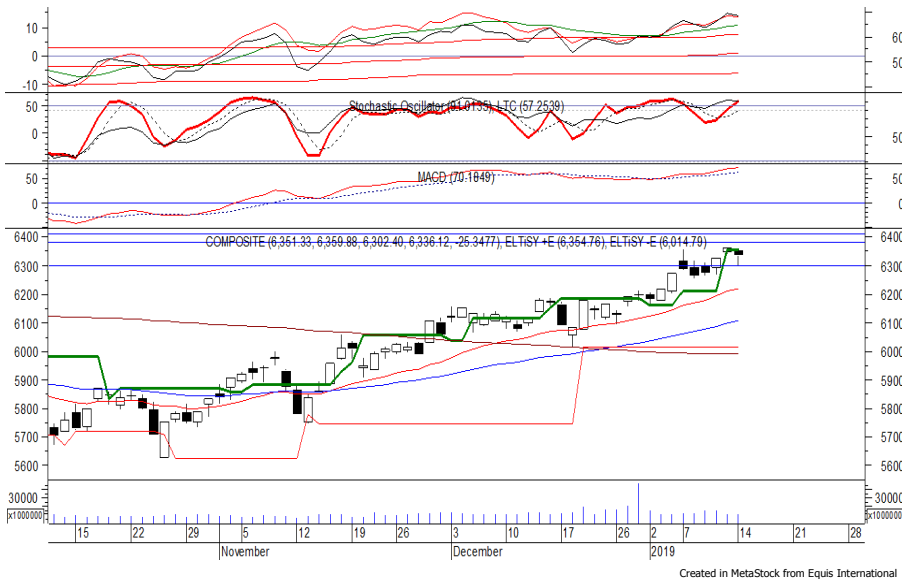


Indeks Harga Saham Gabungan (IHSG)

(IHSG)

Range : 6,300 — 6,380



IHSG ditutup melemah pada perdagangan kemarin berada di level 6,336.

Indeks tampak mengalami konsolidasi dan berpotensi berlanjut menguji kembali support level 6,300.

Stochastic yang mengalami kejenuhan terhadap aksi beli berpotensi membawa indeks melemah. Namun jika indeks berbalik menguat dapat menuju resistance level 6,380.

Hari ini diperkirakan indeks bergerak fluktuatif dengan kecenderungan melemah terbatas.

Level	Support	Resistance
I	6,300	6,380
II	6,270	6,410
III	6,235	6,430

Top Active		
Code	Close	Freq
SRIL	348	44,279
UNTR	26,000	27,696
KPAS	220	25,105
BBCA	26,000	9,119
BBRI	3,790	8,135
TLKM	3,850	7,654
ASII	8,150	7,370
TRAM	182	6,505
ERAA	2,420	6,327
PTSN	1,630	5,949

Top Foreign Buy		
Code	Close	Volume
SRIL	348	140,116,100
BBRI	3,790	83,623,788
KPIG	129	35,590,000
TLKM	3,850	20,268,021
ASII	8,150	19,909,100
PWON	670	17,164,600
ADRO	1,410	16,118,000
BMRI	7,700	15,867,000
PGAS	2,300	12,953,300
BSDE	1,475	10,052,200

Top Foreign Sell		
Code	Close	Volume
BNLI	670	-42,813,300
KPAS	220	-42,609,300
PNLF	292	-32,864,300
ASSA	498	-31,671,500
BUMI	150	-23,781,500
TRAM	182	-23,507,600
WSBP	384	-12,121,500
BRMS	50	-12,099,900
UNTR	26,000	-10,442,316
BHIT	67	-9,749,200

Top Leading		
Code	IDX Pts	Chg (%)
BBRI	6.6	1.6
TELE	1.1	23.2
PNBN	1.1	4.3
MNCN	0.8	7.9
TOPS	0.7	3.0

Top Lagging		
Code	IDX Pts	Chg (%)
HMSP	-6.3	-1.6
UNTR	-6.0	-6.5
BBCA	-5.5	-1.0
ASII	-5.4	-1.8
APIA	-1.6	-1.7

PT Bukit Asam Tbk (PTBA)

b : 0.98

Price : 4,390

TP: 4,490-4,520



PTBA mampu ditutup menguat pada perdagangan kemarin berada di level IDR 4,390.

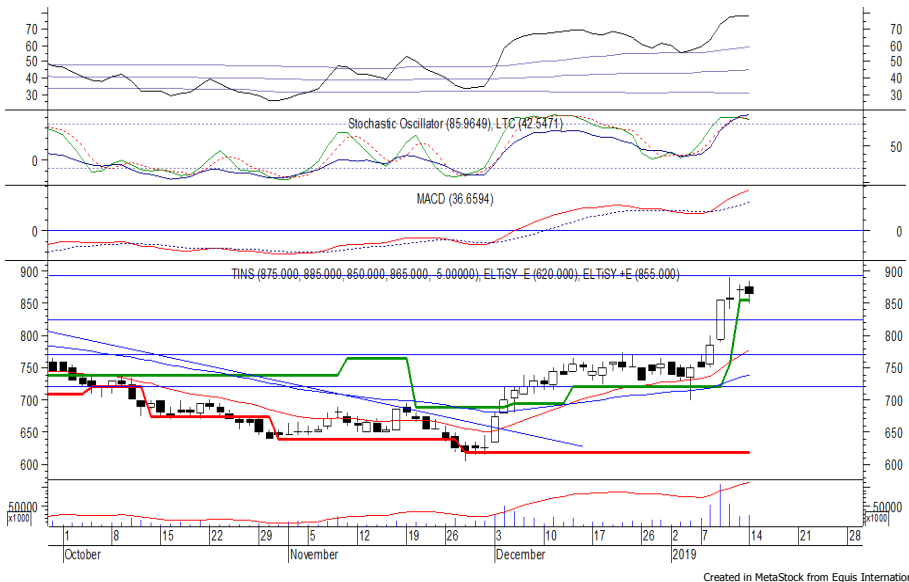
Harga tampak belum mampu melewati EMA 20 dan/atau EMA 50, di mana berpeluang melanjutkan rebound menuju resistance level IDR 4,490 hingga IDR 4,520.

Stochastic berada di wilayah netral dengan kecenderungan menguat. Namun jika harga berbalik melemah dapat menguji support level di IDR 4,280.

Rekomendasi	: Speculative Buy
Entry Level	: 4,360-4,390
Take Profit	: 4,490-4,520
Stop Loss	: 4,310

PT Timah Tbk

(TINS) b : 1.33 Price : 865 BF: 825-805



TINS ditutup melemah pada perdagangan kemarin berada di level IDR 865.

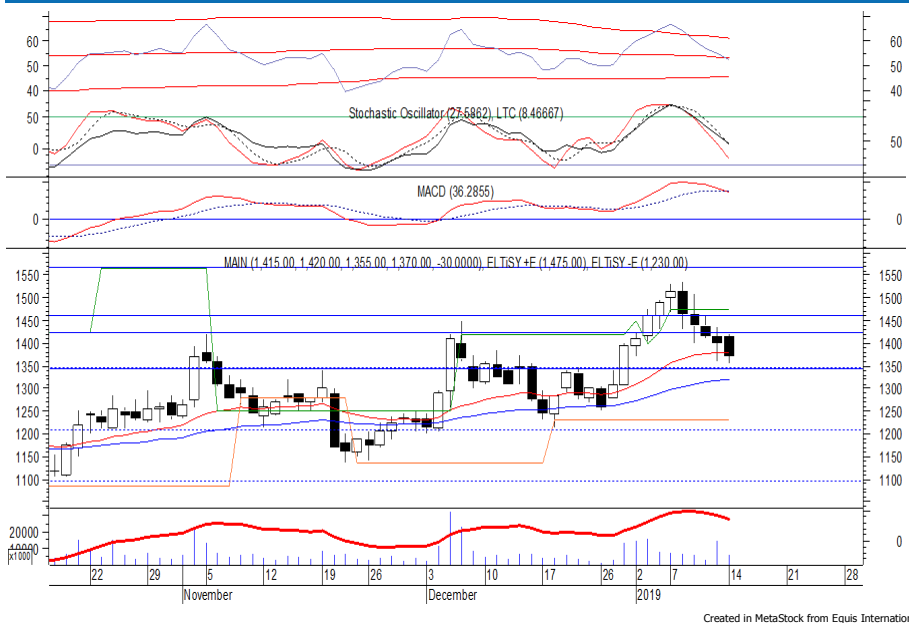
Haga tampak belum mampu melewati resistance level IDR 900, di mana berpotensi melanjutkan pelemahannya menuju support level IDR 825 hingga IDR 805.

Stochastic yang mengalami bearish crossover di wilayah overbought berpotensi membawa harga melemah. Kecuali harga menguat di atas IDR 900.

- Rekomendasi : Sell on Strength
- Exit Level : 885-875
- Bottom Fishing : 825-805
- Buy Back : 910

PT Malindo Feedmill Tbk

(MAIN) b : 1.26 Price : 1,370 TP: 1,425-1,440



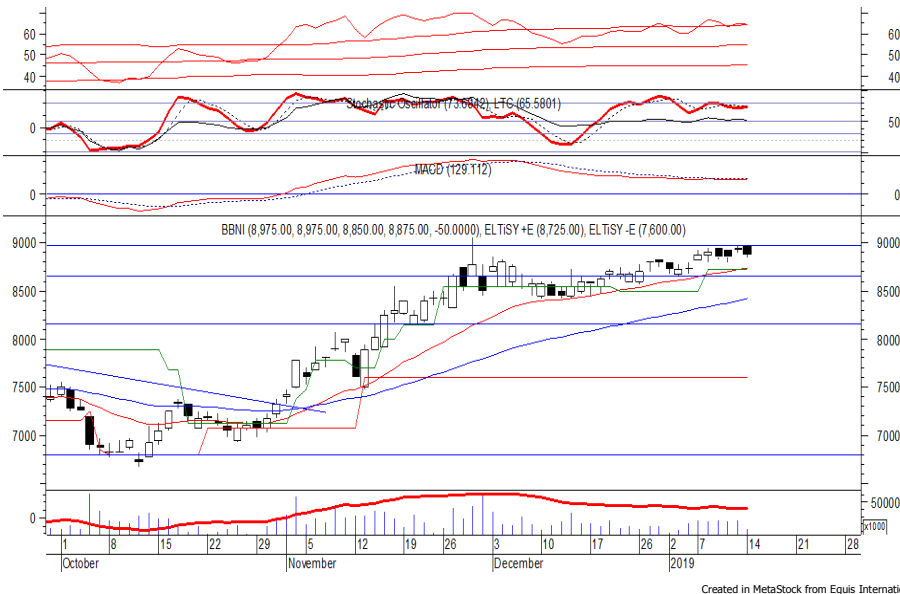
MAIN kembali ditutup melemah melanjutkan pelemahan yang terjadi selama sepekan terakhir.

Harga tampak sedang bergerak menuju support level yang berada di IDR 1,340, yang jika mampu bertahan di (atas) level tersebut, maka berpeluang untuk rebound menuju resistance level IDR 1,425 hingga IDR 1,440.

Kecuali harga kembali bergerak melemah hingga di bawah IDR 1,320, maka berpotensi menguji level berikutnya di IDR 1,300.

- Rekomendasi : Buy on Weakness
- Entry Level : 1,340-1,355
- Take Profit : 1,425-1,440
- Stop Loss : 1,310

PT Bank Negara Indonesia Persero Tbk (BBNI) b : 1.47 Price : 8,875 BF: 8,725-8,650



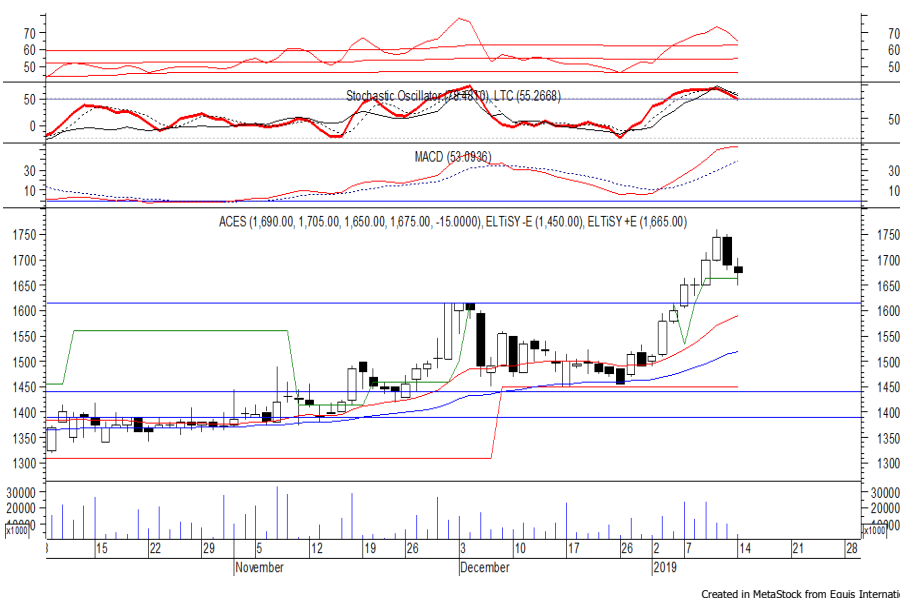
Sempat dibuka menguat pada perdagangan kemarin, BBNI akhirnya ditutup melemah di IDR 8,875.

Kegagalan harga melewati resistance level IDR 8,975 berpotensi membawa BBNI mengalami koreksi jangka pendek menuju support level IDR 8,725 hingga IDR 8,650.

Stochastic mengalami negative divergence dan berpotensi membawa harga melemah. Kecuali harga mampu berbalik menguat hingga di atas IDR 9,075.

- Rekomendasi** : Sell on Strength
- Exit Level** : 8,975-8,875
- Bottom Fishing** : 8,725-8,650
- Buy Back** : 9,100

PT Ace Hardware Indonesia Tbk (ACES) b : 1.03 Price : 1,675 BF: 1,615-1,590



ACES kembali ditutup melemah pada perdagangan kemarin berada di level IDR 1,675.

Harga berpotensi melanjutkan pelemahannya dan bergerak menuju support level IDR 1,615 hingga IDR 1,590.

Stochastic yang mengalami bearish crossover di wilayah overbought berpotensi membawa harga melemah.

Kecuali harga berbalik menguat hingga di atas IDR 1,715.

- Rekomendasi** : Sell on Strength
- Exit Level** : 1,690-1,675
- Bottom Fishing** : 1,615-1,590
- Buy Back** : 1,720

Keterangan:

- Speculative Buy** : Harga menyentuh support, harga dapat saja meneruskan pelemahan, tetapi berpotensi rebound jika harga gagal break support.
 - Buy** : Harga bergerak rebound meninggalkan support level.
 - Trading Buy** : Harga masih berpotensi naik, tetapi sudah mendekati resistance level.
 - Sell** : Harga telah mencapai resistance level.
- Rekomendasi berdasarkan candlestick berlaku sampai 5 atau 8 hari ke depan (maksimal 10 hari), selebihnya dapat diartikan bahwa formasi candlestick gagal.

Research Division

Danny Eugene	Mining, Finance, Instructure	danny.eugene@megasekuritas.id	+62 21 7917 5599	62431
Helen	Consumer Goods, Basic Industry, Trade & Services Property, Agriculture, Misc. Indus-	helen.vincentia@megasekuritas.id	+62 21 7917 5599	62035
Adrian M. Priyatna	try	adrian@megasekuritas.id	+62 21 7917 5599	62425
Qolbie Ardie	Economist	qolbie@megasekuritas.id	+62 21 7917 5599	62143
Fadlillah Qudsi	Technical Analyst	fadlillah.qudsi@megasekuritas.id	+62 21 7917 5599	62035

Retail Equity Sales Division

Hendry Kuswari	Head of Sales, Trading & Dealing	hendry@megasekuritas.id	+62 21 7917 5599	62038
Dewi Suryani	Retail Equity Sales	dewi.suryani@megasekuritas.id	+62 21 7917 5599	62441
Brema Setyawan	Retail Equity Sales	brema.setyawan@megasekuritas.id	+62 21 7917 5599	62126
Ety Sulistyowati	Retail Equity Sales	ety.sulistyowati@megasekuritas.id	+62 21 7917 5599	62408
Fadel M. Iqbal	Retail Equity Sales	fadel@megasekuritas.id	+62 21 7917 5599	62164
Andri Sumarno	Retail Equity Sales	andri@megasekuritas.id	+62 21 7917 5599	62045
Harini Citra	Retail Equity Sales	harini@megasekuritas.id	+62 21 7917 5599	62161
Syaifathir Muhammad	Retail Equity Sales	fathir@megasekuritas.id	+62 21 7917 5599	62179

Corporate Equity Sales Division

Rachmadian Iskandar Z	Corporate Equity Sales	rachmadian@megasekuritas.id	+62 21 7917 5599	62402
Ratna Wijayanti	Corporate Equity Sales	ratna.wijayanti@megasekuritas.id	+62 21 7917 5599	62055
Reza Mahendra	Corporate Equity Sales	reza.mahendra@megasekuritas.id	+62 21 7917 5599	62409

Fixed Income Sales & Trading

Tel. +62 7917 5559-62 Fax. +62 21 7917 5965

Investment Banking

Tel. +62 21 7917 5599 Fax. +62 21 7919 3900

Kantor Pusat

 Menara Bank Mega Lt. 2
 Jl. Kapt P. Tendean, Kav 12-14 A
 Jakarta Selatan 12790

Pondok Indah

 Plaza 5 Pondok Indah Blok D No. 15 Lt. 2
 Jl. Margaguna Raya Pondok Indah
 Jakarta Selatan

Kelapa Gading

 Ruko Gading Bukit Indah Lt.2
 Jl. Bukit Gading Raya Blok A No. 26, Kelapa Gading
 Jakarta Utara - 14240

DISCLAIMER

This Document is for information only and for the use of the recipient. It is not to be reproduced or copied or made available to others. Under no circumstances is it to be considered as an offer to sell or solicitation to buy any security. Any recommendation contained in this report may not be suitable for all investors and strictly a personal view and should not be used as a sole judgment for investment. Moreover, although the information contained herein has been obtained from sources believed to be reliable, its accuracy, completeness and reliability cannot be guaranteed. All rights reserved by PT Mega Capital Sekuritas.