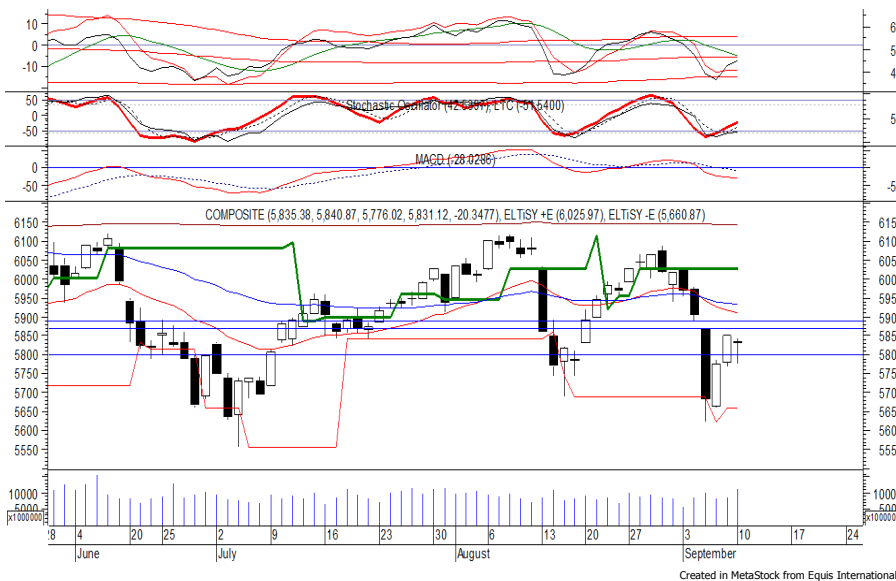


## Indeks Harga Saham Gabungan (IHSG)

Range : 5,800 — 5,870



IHSG pada perdagangan kemarin ditutup melemah berada di level 5,831.

Indeks berpeluang untuk mengalami konsolidasi dengan bergerak menuju resistance level 5,870 hingga 5,890.

Stochastic yang mengalami bullish crossover memberikan peluang untuk menguat. Namun jika indeks berbalik melemah, dapat menguji support level 5,800.

Hari ini diperkirakan indeks bergerak fluktuatif, dengan kecenderungan menguat terbatas.

| Level | Support | Resistance |
|-------|---------|------------|
| I     | 5,800   | 5,870      |
| II    | 5,770   | 5,890      |
| III   | 5,745   | 5,940      |

| Top Active |        |       | Top Foreign Buy |       |            | Top Foreign Sell |       |             | Top Leading |         |         |
|------------|--------|-------|-----------------|-------|------------|------------------|-------|-------------|-------------|---------|---------|
| Code       | Close  | Freq  | Code            | Close | Volume     | Code             | Close | Volume      | Code        | IDX Pts | Chg (%) |
| BBRI       | 2,970  | 8,214 | TRAM            | 216   | 41,526,000 | RIMO             | 132   | -14,436,100 | UNVR        | 7.2     | 2.4     |
| BBCA       | 24,750 | 7,656 | BRMS            | 54    | 20,975,200 | WSBP             | 358   | -13,518,400 | TPIA        | 2.1     | 2.6     |
| IKAI       | 165    | 7,319 | BUMI            | 214   | 17,160,000 | BBRI             | 2,970 | -12,553,300 | INCO        | 1.2     | 4.0     |
| UNVR       | 45,525 | 7,150 | ARNA            | 334   | 15,000,000 | SCMA             | 1,875 | -9,356,500  | SRTG        | 0.7     | 7.0     |
| PTBA       | 3,720  | 6,242 | ADRO            | 1,735 | 9,335,200  | PTBA             | 3,720 | -9,180,100  | BSDE        | 0.6     | 3.1     |
| RIGS       | 374    | 6,088 | IKAI            | 165   | 8,505,100  | SSMS             | 1,245 | -9,145,400  | Top Lagging |         |         |
| ADRO       | 1,735  | 5,880 | ACES            | 1,255 | 5,262,800  | BEST             | 172   | -8,287,400  | Code        | IDX Pts | Chg (%) |
| TLKM       | 3,380  | 5,856 | LEAD            | 78    | 5,037,500  | PGAS             | 2,020 | -8,161,500  | HMSP        | -8.3    | -2.1    |
| LAND       | 1,210  | 4,959 | PWON            | 525   | 4,029,600  | BRIS             | 610   | -8,027,100  | BBRI        | -6.6    | -2.0    |
| PBRX       | 500    | 4,519 | BSDE            | 1,150 | 3,523,800  | VIVA             | 143   | -6,426,100  | BBCA        | -2.2    | -0.4    |
|            |        |       |                 |       |            |                  |       |             | BMRI        | -2.1    | -0.8    |
|            |        |       |                 |       |            |                  |       |             | UNTR        | -1.4    | -1.3    |

## PT Vale Indonesia Tbk

(INCO) b :

1.29 Price :

3,350 TP:

3,470



INCO mampu ditutup menguat pada perdagangan kemarin berada di level IDR 3,350.

Harga berpeluang untuk melanjutkan rebound setelah belum mampu melewati support level IDR 3,150, di mana berpeluang menuju resistance level IDR 3,470.

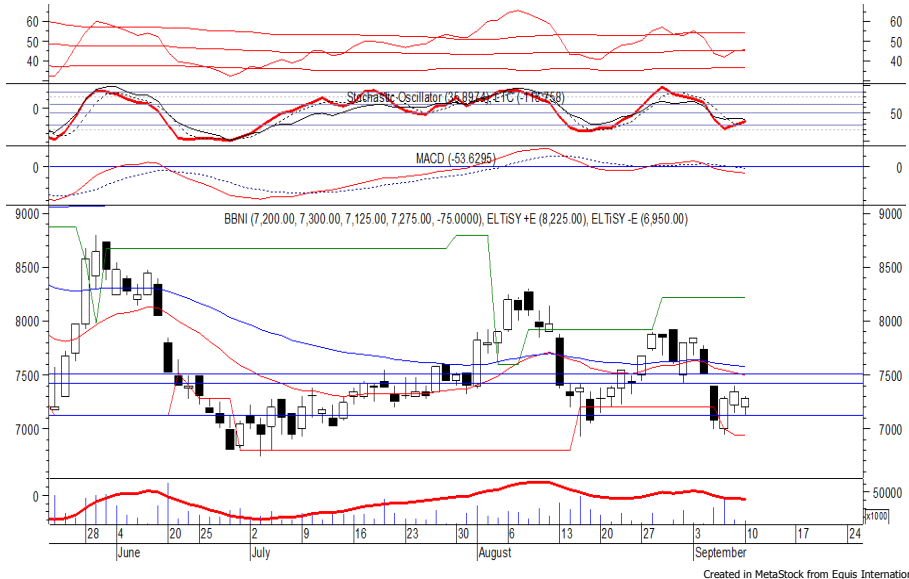
Stochastic yang mengalami bullish crossover dan bergerak meninggalkan wilayah oversold memberikan peluang untuk menguat.

- Rekomendasi** : Trading Buy
- Entry Level** : 3,320-3,350
- Take Profit** : 3,470
- Stop Loss** : 3,280

## PT Bank Negara Indonesia Persero Tbk

(BBNI) b:

1.38 Price : 7,275 TP: 7,425-7,500



BBNI ditutup melemah pada perdagangan kemarin berada di level IDR 7,275.

Harga tampak sedang mencoba untuk bertahan di atas support level IDR 7,125, di mana berpeluang untuk mengalami rebound menuju resistance level IDR 7,425 hingga IDR 7,500.

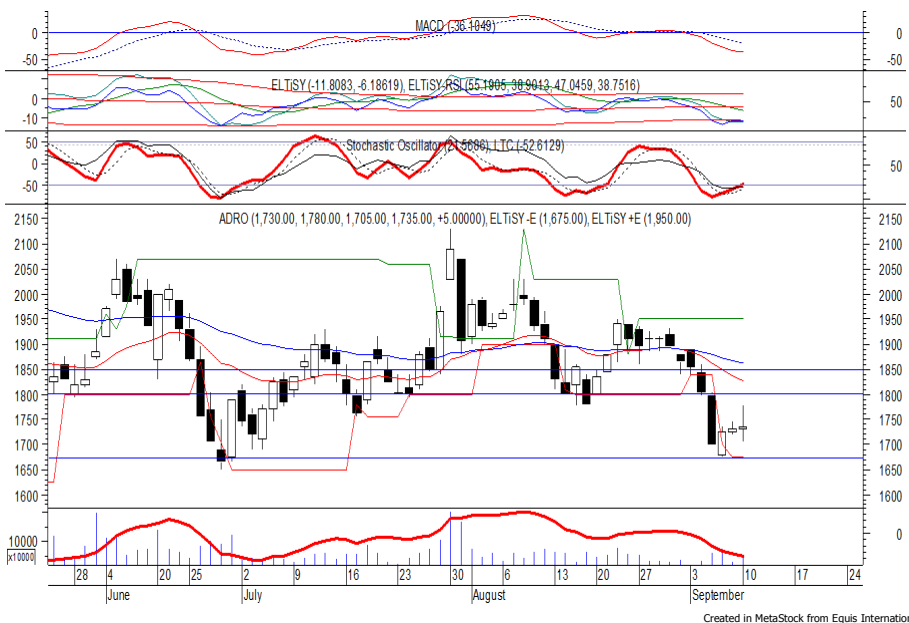
Stochastic yang mengalami bullish crossover memberikan peluang untuk menguat. Kecuali harga berbalik melemah hingga di bawah IDR 7,125.

- Rekomendasi : Buy on Weakness
- Entry Level : 7,200-7,275
- Take Profit : 7,425-7,500
- Stop Loss : 7,100

## PT Adaro Energy Tbk

(ADRO) b:

1.16 Price : 1,735 TP: 1,780-1,800



ADRO ditutup menguat pada perdagangan kemarin berada di level IDR 1,735.

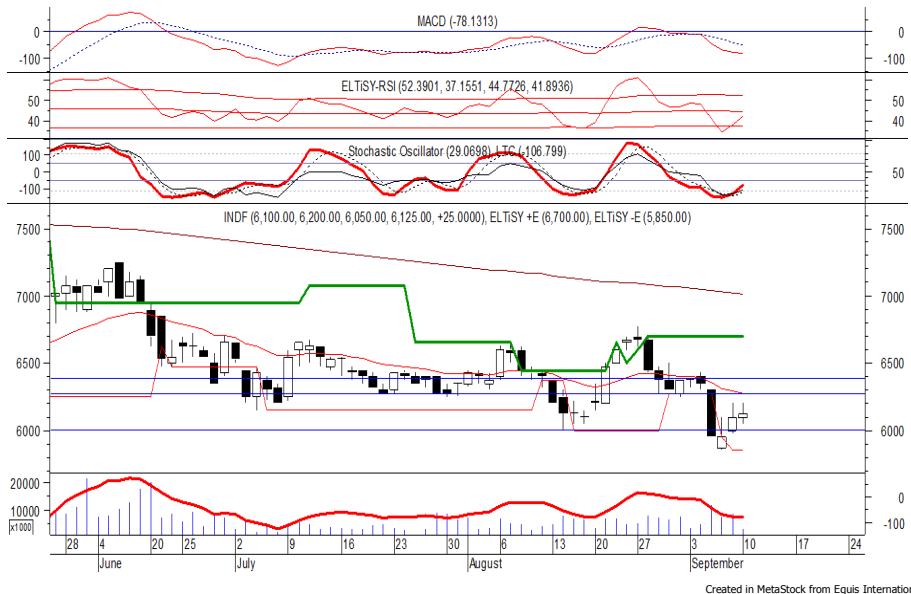
Harga berpeluang untuk mengalami rebound dan bergerak menuju resistance level IDR 1,780 hingga IDR 1,800.

Stochastic yang mengalami bullish crossover di wilayah oversold memberikan peluang untuk menguat. Namun jika harga berbalik melemah dapat menguji support level yang berada di IDR 1,675.

- Rekomendasi : Speculative Buy
- Entry Level : 1,720-1,735
- Take Profit : 1,780-1,800
- Stop Loss : 1,695

## PT Indofood Sukses Makmur Tbk

(INDF) b : 1.22 Price : 6,125 TP: 6,275-6,375



INDF pada perdagangan sebelumnya ditutup menguat tipis di level IDR 6,125.

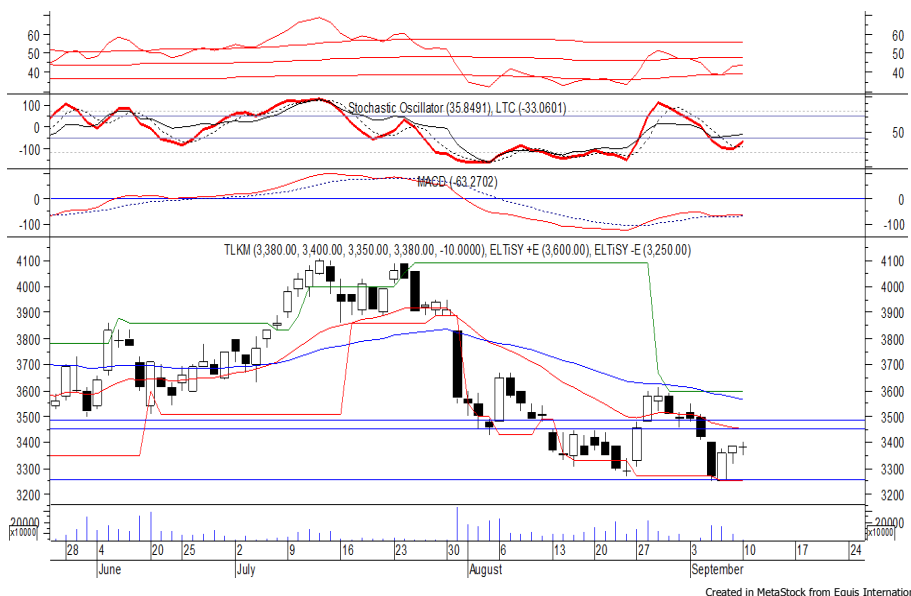
Harga berpeluang untuk dapat melanjutkan penguatannya dan bergerak menuju resistance level IDR 6,275 hingga IDR 6,375.

Stochastic yang mengalami bullish crossover dan bergerak meninggalkan wilayah oversold memberikan peluang untuk menguat. Kecuali harga berbalik melemah di bawah IDR 5,975.

- Rekomendasi : Speculative Buy
- Entry Level : 6,050-6,125
- Take Profit : 6,275-6,375
- Stop Loss : 5,950

## PT Telekomunikasi Indonesia Persero Tbk

(TLKM) b : 0.84 Price : 3,380 TP: 3,450-3,480



TLKM ditutup melemah pada perdagangan sebelumnya berada di level IDR 3,380.

Harga berpeluang untuk melanjutkan rebound yang terjadi sebelumnya dan bergerak menuju resistance level IDR 3,450 hingga IDR 3,480.

Stochastic yang mengalami bullish crossover memberikan peluang untuk menguat. Namun jika harga berbalik melemah dapat bergerak menuju support level IDR 3,250.

- Rekomendasi : Speculative Buy
- Entry Level : 3,350-3,380
- Take Profit : 3,450-3,480
- Stop Loss : 3,300

### Keterangan:

- Speculative Buy : Harga menyentuh support, harga dapat saja meneruskan pelemahan, tetapi berpotensi rebound jika harga gagal break support.
  - Buy : Harga bergerak rebound meninggalkan support level.
  - Trading Buy : Harga masih berpotensi naik, tetapi sudah mendekati resistance level.
  - Sell : Harga telah mencapai resistance level.
- Rekomendasi berdasarkan candlestick berlaku sampai 5 atau 8 hari ke depan (maksimal 10 hari), selebihnya dapat diartikan bahwa formasi candlestick gagal.

**Research Division**

|                    |  |                                  |                  |       |
|--------------------|--|----------------------------------|------------------|-------|
| Danny Eugene       | Strategist, Automotive, Telco, Textile, Energy | danny.eugene@megasekuritas.id    | +62 21 7917 5599 | 62431 |
| Helen Vincentia    | Consumer Goods, Retail                         | helen.vincentia@megasekuritas.id | +62 21 7917 5599 | 62035 |
| Fikri Syaryadi     | Banking, Mining                                | fikri@megasekuritas.id           | +62 21 7917 5599 | 62035 |
| Adrian M. Priyatna | Property, Construction, Cement                 | adrian@megasekuritas.id          | +62 21 7917 5599 | 62425 |
| Qolbie Ardie       | Economist                                      | qolbie@megasekuritas.id          | +62 21 7917 5599 | 62143 |
| Fadlillah Qudsi    | Technical Analyst                              | fadlillah.qudsi@megasekuritas.id | +62 21 7917 5599 | 62035 |

**Retail Equity Sales Division**

|                     |                                  |                                   |                  |       |
|---------------------|----------------------------------|-----------------------------------|------------------|-------|
| Hendry Kuswari      | Head of Sales, Trading & Dealing | hendry@megasekuritas.id           | +62 21 7917 5599 | 62038 |
| Dewi Suryani        | Retail Equity Sales              | dewi.suryani@megasekuritas.id     | +62 21 7917 5599 | 62441 |
| Brema Setyawan      | Retail Equity Sales              | brema.setyawan@megasekuritas.id   | +62 21 7917 5599 | 62126 |
| Ety Sulistyowati    | Retail Equity Sales              | ety.sulistyowati@megasekuritas.id | +62 21 7917 5599 | 62408 |
| Fadel M. Iqbal      | Retail Equity Sales              | fadel@megasekuritas.id            | +62 21 7917 5599 | 62164 |
| Andri Sumarno       | Retail Equity Sales              | andri@megasekuritas.id            | +62 21 7917 5599 | 62045 |
| Harini Citra        | Retail Equity Sales              | harini@megasekuritas.id           | +62 21 7917 5599 | 62161 |
| Syaifathir Muhammad | Retail Equity Sales              | fathir@megasekuritas.id           | +62 21 7917 5599 | 62179 |

**Corporate Equity Sales Division**

|                       |                        |                                  |                  |       |
|-----------------------|------------------------|----------------------------------|------------------|-------|
| Rachmadian Iskandar Z | Corporate Equity Sales | rachmadian@megasekuritas.id      | +62 21 7917 5599 | 62402 |
| Ratna Wijayanti       | Corporate Equity Sales | ratna.wijayanti@megasekuritas.id | +62 21 7917 5599 | 62055 |
| Reza Mahendra         | Corporate Equity Sales | reza.mahendra@megasekuritas.id   | +62 21 7917 5599 | 62409 |

**Fixed Income Sales & Trading**

Tel. +62 7917 5559-62 Fax. +62 21 7917 5965

**Investment Banking**

Tel. +62 21 7917 5599 Fax. +62 21 7919 3900

**Kantor Pusat**

 Menara Bank Mega Lt. 2  
 Jl. Kapt P. Tendean, Kav 12-14 A  
 Jakarta Selatan 12790

**Pondok Indah**

 Plaza 5 Pondok Indah Blok D No. 15 Lt. 2  
 Jl. Margaguna Raya Pondok Indah  
 Jakarta Selatan

**Kelapa Gading**

 Ruko Gading Bukit Indah Lt.2  
 Jl. Bukit Gading Raya Blok A No. 26, Kelapa Gading  
 Jakarta Utara - 14240

**DISCLAIMER**

This Document is for information only and for the use of the recipient. It is not to be reproduced or copied or made available to others. Under no circumstances is it to be considered as an offer to sell or solicitation to buy any security. Any recommendation contained in this report may not be suitable for all investors and strictly a personal view and should not be used as a sole judgment for investment. Moreover, although the information contained herein has been obtained from sources believed to be reliable, its accuracy, completeness and reliability cannot be guaranteed. All rights reserved by PT Mega Capital Sekuritas.