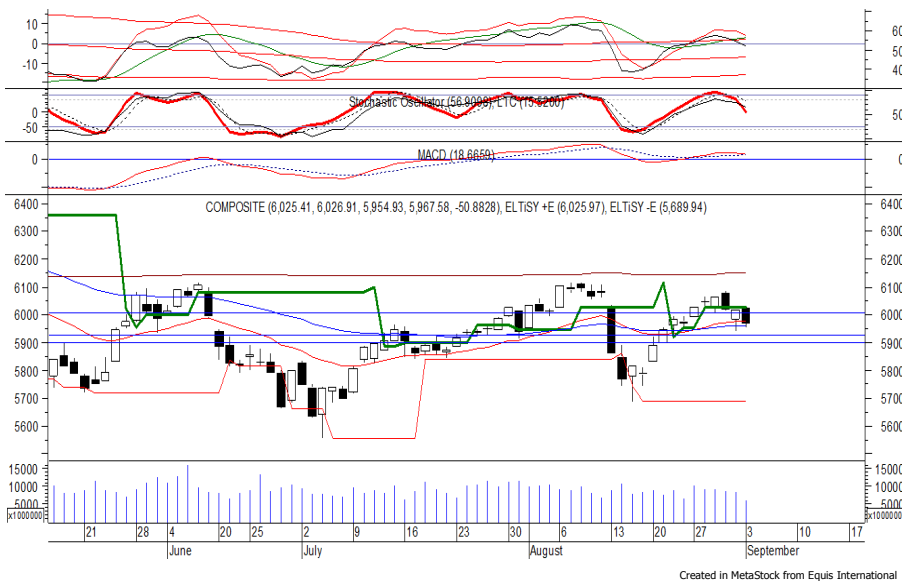


Indeks Harga Saham Gabungan (IHSG)

Range : 5,925 — 6,000



Sempat dibuka menguat di awal perdagangan kemarin, indeks akhirnya ditutup melemah berada di level 5,967.

Indeks berpotensi untuk kembali melanjutkan pelemahannya menuju support level 5,925 hingga 5,895.

Stochastic yang bergerak meninggalkan wilayah overbought berpotensi membawa indeks kembali melemah. Namun jika indeks berbalik menguat dapat menguji 6,000. Hari ini diperkirakan indeks kembali fluktuatif, cenderung melemah terbatas.

| Level | Support | Resistance |
|-------|---------|------------|
| I | 5,925 | 6,000 |
| II | 5,895 | 6,025 |
| III | 5,865 | 6,055 |

| Top Active | | | Top Foreign Buy | | | Top Foreign Sell | | | Top Leading | | |
|------------|--------|--------|-----------------|-------|------------|------------------|-------|-------------|-------------|---------|---------|
| Code | Close | Freq | Code | Close | Volume | Code | Close | Volume | Code | IDX Pts | Chg (%) |
| MOLI | 1,185 | 18,627 | RIMO | 135 | 11,048,500 | CFIN | 252 | -30,506,600 | BBNI | 0.8 | 0.6 |
| PBRX | 500 | 6,452 | ACES | 1,365 | 6,339,400 | PNLF | 208 | -17,807,000 | PNBN | 0.7 | 4.1 |
| BBRI | 3,170 | 5,666 | BBNI | 7,850 | 5,872,100 | BMRI | 6,700 | -9,843,500 | NASA | 0.7 | 16.9 |
| PGAS | 2,050 | 5,298 | IIKP | 270 | 4,954,100 | ANTM | 830 | -9,027,600 | CPIN | 0.7 | 0.9 |
| TKIM | 13,950 | 5,227 | PTBA | 4,100 | 4,637,350 | PGAS | 2,050 | -7,905,400 | BDMN | 0.6 | 1.1 |
| TRAM | 212 | 5,108 | KLBF | 1,320 | 4,455,800 | LSIP | 1,350 | -6,621,200 | Top Lagging | | |
| INKP | 18,525 | 4,646 | TRAM | 212 | 3,547,500 | ASII | 7,100 | -6,375,300 | Code | IDX Pts | Chg (%) |
| INCO | 3,560 | 4,619 | CPIN | 5,025 | 3,165,100 | PNBN | 885 | -5,979,300 | BMRI | -8.3 | -2.9 |
| ANTM | 830 | 4,507 | ADRO | 1,855 | 2,723,600 | AKRA | 3,610 | -5,901,826 | ASII | -5.4 | -2.1 |
| ERAA | 2,630 | 4,323 | TLKM | 3,490 | 2,656,600 | INCO | 3,560 | -5,307,400 | HMSP | -4.2 | -1.0 |
| | | | | | | | | | INKP | -2.8 | -3.0 |
| | | | | | | | | | INTP | -2.6 | -4.4 |

PT Petrosea Tbk

(PTRO) β : 1.42 Price : 1,970 TP: 2,050-2,100



PTRO kembali ditutup menguat pada perdagangan kemarin berada di level IDR 1,970.

Harga tampak sedang bergerak melewati resistance level IDR 1,930, di mana berpeluang untuk berlanjut menuju level berikutnya di IDR 2,050 hingga IDR 2,100.

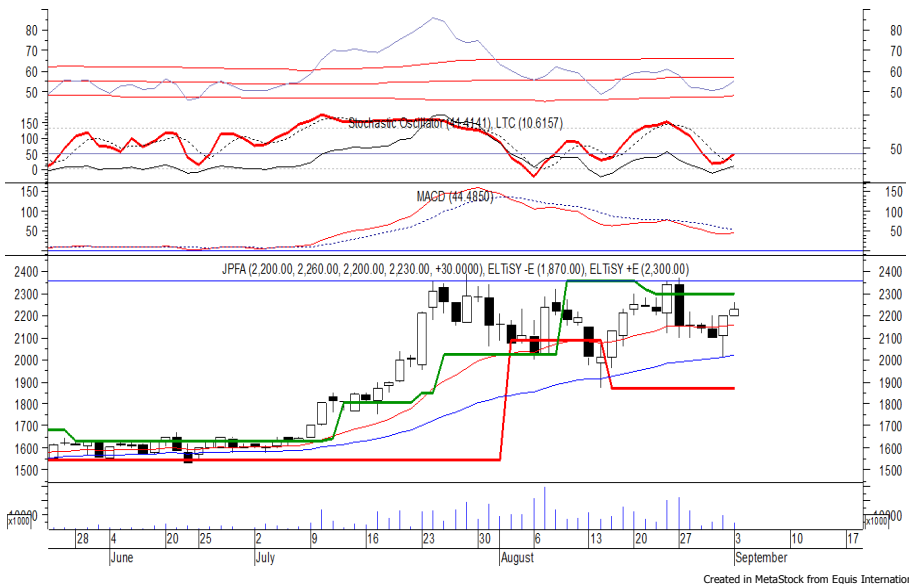
Namun stochastic yang memasuki wilayah overbought berpotensi menghambat laju penguatan harga.

Rekomendasi : Trading Buy
Entry Level : 1,950-1,970
Take Profit : 2,050-2,100
Stop Loss : 1,925

PT Japfa Comfeed Indonesia Tbk

(JPFA) β :

0.75 Price : 2,230 TP: 2,300-2,360



JPFA pada perdagangan kemarin ditutup menguat berada di level IDR 2,230.

Harga berpeluang untuk kembali melanjutkan penguatannya menuju resistance level IDR 2,300 hingga IDR 2,360.

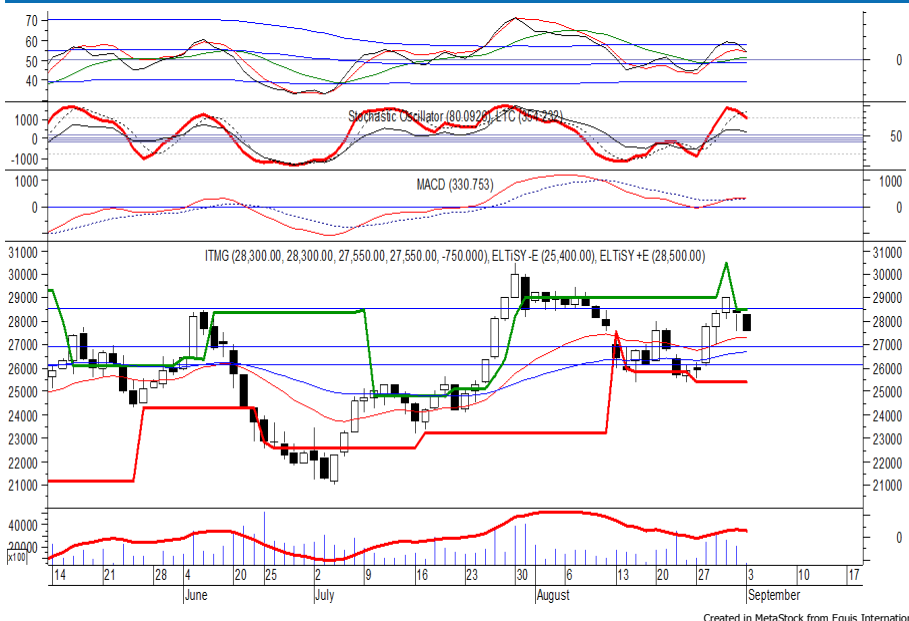
Stochastic yang mengalami bullish crossover memberikan peluang untuk menguat. Namun jika harga berbalik melemah dapat menguji support level IDR 2,100.

- Rekomendasi : Trading Buy
- Entry Level : 2,200-2,230
- Take Profit : 2,300-2,360
- Stop Loss : 2,160

PT Indo Tambangraya Megah Tbk

(ITMG) β :

1.06 Price : 27,550 BF: 26,900-26,150



ITMG kembali ditutup melemah pada perdagangan kemarin berada di level IDR 27,550.

Harga berpotensi untuk kembali melanjutkan pelemahannya setelah belum mampu melewati resistance level IDR 28,500, di mana berpotensi menuju support level IDR 26,900 hingga IDR 26,150.

Stochastic yang mengalami bearish crossover berpotensi membawa harga melemah. Kecuali harga mampu menguat hingga di atas IDR 28,500.

- Rekomendasi : Sell on Strength
- Exit Level : 28,150-27,900
- Bottom Fishing : 26,900-26,150
- Buy Back : 28,600

PT Indocement Tunggal Prakarsa Tbk

(INTP) β : 1.43 Price : 16,950 BF: 16,500-16,100



INTP pada perdagangan kemarin ditutup melemah berada di level IDR 16,950.

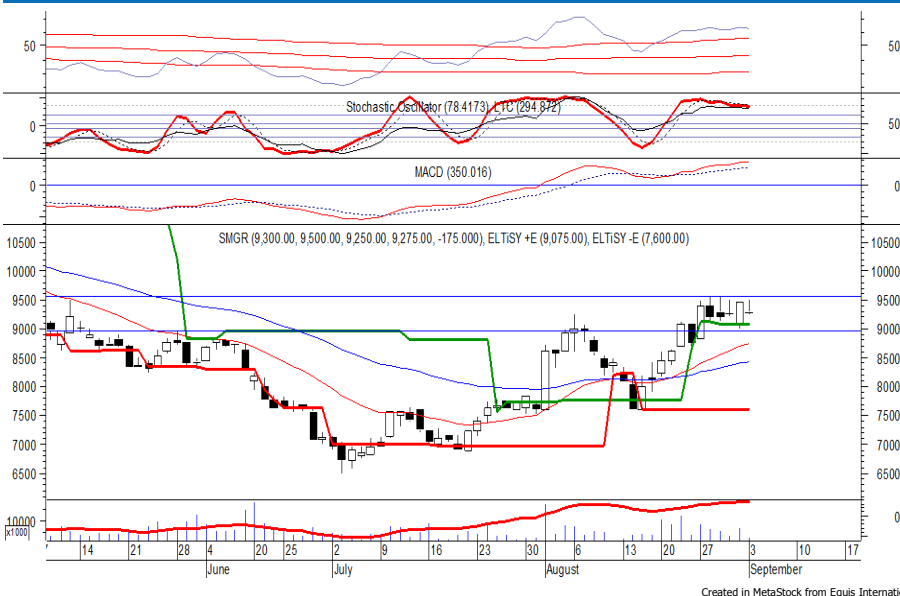
Harga tampak belum mampu untuk melewati resistance level IDR 17,850, di mana berpotensi melanjutkan pelemahannya menuju support level IDR 16,500 hingga IDR 16,100.

Stochastic yang mengalami bearish crossover berpotensi membawa harga melemah. Kecuali harga mampu menguat hingga di atas IDR 17,850.

- Rekomendasi** : Sell on Strength
- Exit Level** : 17,500-17,200
- Bottom Fishing** : 16,500-16,100
- Buy Back** : 17,900

PT Semen Indonesia Persero Tbk

(SMGR) β : 1.18 Price : 9,275 BF: 9,075-8,950



SMGR ditutup melemah pada perdagangan kemarin berada di level IDR 9,275.

Harga tampak sedang mengalami konsolidasi selama sepekan terakhir dan belum mampu melewati resistance level IDR 9,550.

Stochastic yang mulai bergerak meninggalkan wilayah overbought berpotensi membawa harga melemah. Kecuali harga mampu berbalik menguat di atas IDR 9,750.

- Rekomendasi** : Sell on Strength
- Exit Level** : 9,550-9,400
- Bottom Fishing** : 9,075-8,950
- Buy Back** : 9,775

Keterangan:

- Speculative Buy** : Harga menyentuh support, harga dapat saja meneruskan pelemahan, tetapi berpotensi rebound jika harga gagal break support.
 - Buy** : Harga bergerak rebound meninggalkan support level.
 - Trading Buy** : Harga masih berpotensi naik, tetapi sudah mendekati resistance level.
 - Sell** : Harga telah mencapai resistance level.
- Rekomendasi berdasarkan candlestick berlaku sampai 5 atau 8 hari ke depan (maksimal 10 hari), selebihnya dapat diartikan bahwa formasi candlestick gagal.

Research Division

| | | | | |
|--------------------|--|----------------------------------|------------------|-------|
| Danny Eugene | Strategist, Automotive, Telco, Textile, Energy | danny.eugene@megasekuritas.id | +62 21 7917 5599 | 62431 |
| Helen Vincentia | Consumer Goods, Retail | helen.vincentia@megasekuritas.id | +62 21 7917 5599 | 62035 |
| Fikri Syaryadi | Banking, Mining | fikri@megasekuritas.id | +62 21 7917 5599 | 62035 |
| Adrian M. Priyatna | Property, Construction, Cement | adrian@megasekuritas.id | +62 21 7917 5599 | 62425 |
| Qolbie Ardie | Economist | qolbie@megasekuritas.id | +62 21 7917 5599 | 62143 |
| Fadlillah Qudsi | Technical Analyst | fadlillah.qudsi@megasekuritas.id | +62 21 7917 5599 | 62035 |

Retail Equity Sales Division

| | | | | |
|---------------------|----------------------------------|-----------------------------------|------------------|-------|
| Hendry Kuswari | Head of Sales, Trading & Dealing | hendry@megasekuritas.id | +62 21 7917 5599 | 62038 |
| Dewi Suryani | Retail Equity Sales | dewi.suryani@megasekuritas.id | +62 21 7917 5599 | 62441 |
| Brema Setyawan | Retail Equity Sales | brema.setyawan@megasekuritas.id | +62 21 7917 5599 | 62126 |
| Ety Sulistyowati | Retail Equity Sales | ety.sulistyowati@megasekuritas.id | +62 21 7917 5599 | 62408 |
| Fadel M. Iqbal | Retail Equity Sales | fadel@megasekuritas.id | +62 21 7917 5599 | 62164 |
| Andri Sumarno | Retail Equity Sales | andri@megasekuritas.id | +62 21 7917 5599 | 62045 |
| Harini Citra | Retail Equity Sales | harini@megasekuritas.id | +62 21 7917 5599 | 62161 |
| Syaifathir Muhammad | Retail Equity Sales | fathir@megasekuritas.id | +62 21 7917 5599 | 62179 |

Corporate Equity Sales Division

| | | | | |
|-----------------------|------------------------|----------------------------------|------------------|-------|
| Rachmadian Iskandar Z | Corporate Equity Sales | rachmadian@megasekuritas.id | +62 21 7917 5599 | 62402 |
| Ratna Wijayanti | Corporate Equity Sales | ratna.wijayanti@megasekuritas.id | +62 21 7917 5599 | 62055 |
| Reza Mahendra | Corporate Equity Sales | reza.mahendra@megasekuritas.id | +62 21 7917 5599 | 62409 |

Fixed Income Sales & Trading

Tel. +62 7917 5559-62 Fax. +62 21 7917 5965

Investment Banking

Tel. +62 21 7917 5599 Fax. +62 21 7919 3900

Kantor Pusat

 Menara Bank Mega Lt. 2
 Jl. Kapt P. Tendean, Kav 12-14 A
 Jakarta Selatan 12790

Pondok Indah

 Plaza 5 Pondok Indah Blok D No. 15 Lt. 2
 Jl. Margaguna Raya Pondok Indah
 Jakarta Selatan

Kelapa Gading

 Ruko Gading Bukit Indah Lt.2
 Jl. Bukit Gading Raya Blok A No. 26, Kelapa Gading
 Jakarta Utara - 14240

DISCLAIMER

This Document is for information only and for the use of the recipient. It is not to be reproduced or copied or made available to others. Under no circumstances is it to be considered as an offer to sell or solicitation to buy any security. Any recommendation contained in this report may not be suitable for all investors and strictly a personal view and should not be used as a sole judgment for investment. Moreover, although the information contained herein has been obtained from sources believed to be reliable, its accuracy, completeness and reliability cannot be guaranteed. All rights reserved by PT Mega Capital Sekuritas.