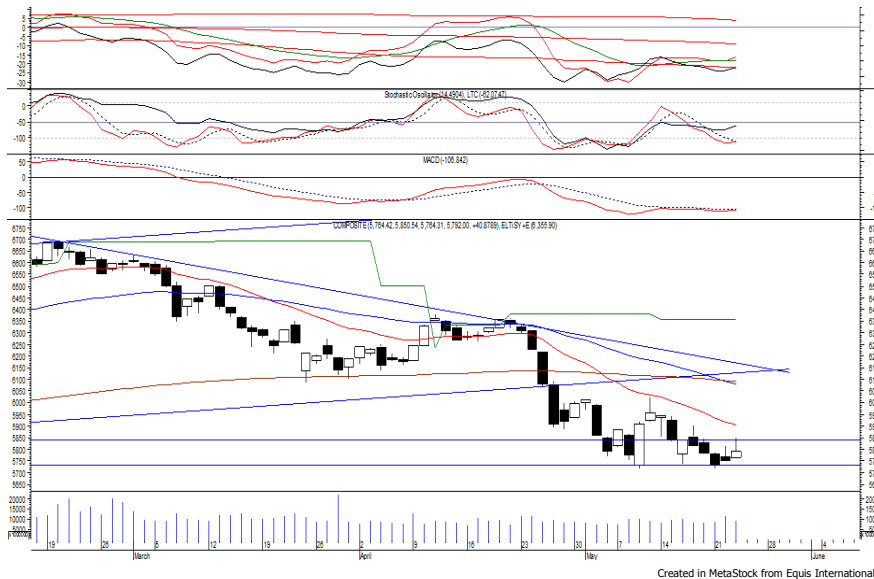


Indeks Harga Saham Gabungan (IHSG)

(IHSG)

Range : 5,730 — 5,840



IHSG kembali ditutup menguat pada perdagangan kemarin berada di level 5,792.

Indeks berpeluang untuk kembali melanjutkan konsolidasi dengan bergerak menuju resistance level 5,840.

MACD yang mengindikasikan terjadinya golden cross memberikan peluang untuk menguat. Namun jika indeks berbalik melemah berpotensi menuju support level di 5,730.

Hari ini diperkirakan indeks kembali fluktuatif cenderung menguat terbatas.

Level	Support	Resistance
I	5,730	5,840
II	5,700	5,890
III	5,675	5,940

Top Active			Top Foreign Buy			Top Foreign Sell			Top Leading		
Code	Close	Freq	Code	Close	Volume	Code	Close	Volume	Code	IDX Pts	Chg (%)
INPC	84	25,884	PZZA	1,105	210,560,600	ADRO	1,825	-29,741,300	BBRI	17.5	5.9
BBRI	2,880	23,138	BBRI	2,880	181,167,155	TLKM	3,470	-21,991,400	BMRI	10.4	3.8
KREN	690	11,852	TRAM	362	26,992,800	KIJA	228	-12,211,400	HMSP	8.3	2.3
FREN	112	8,857	BUMI	254	21,352,700	ULTJ	1,160	-11,277,900	TKIM	2.4	7.2
TLKM	3,470	7,398	BMRI	6,775	13,791,600	WSKT	2,260	-8,882,300	GGRM	2.3	2.0
ADRO	1,825	7,391	BBNI	7,200	12,445,900	PGAS	1,880	-8,353,700	Top Lagging		
INKP	15,000	7,373	BHIT	121	8,440,000	BBTN	2,860	-6,919,400	Code	IDX Pts	Chg (%)
MITI	129	7,206	PTBA	3,770	8,091,300	ERAA	2,560	-6,812,000	BYAN	-6.4	-19.7
BBNI	7,200	7,084	ANTM	845	6,638,700	BBKP	396	-6,795,100	ADRO	-3.0	-5.4
EXCL	2,160	6,962	ELSA	436	6,316,000	TINS	940	-6,783,000	FREN	-1.9	-15.2
									KLBF	-1.5	-2.7
									BSIM	-1.3	-15.5

PT Barito Pacific Tbk

(BRPT) β : 0.67 Price : 2,280 TP: 2,370-2,410



BRPT mampu ditutup menguat pada perdagangan kemarin berada di level IDR 2,280.

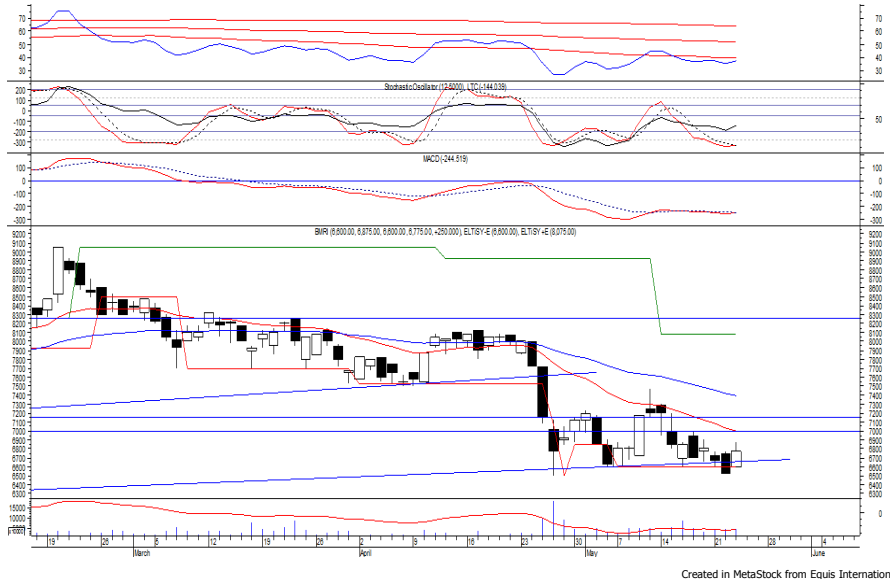
Harga tampak sedang mencoba untuk melewati resistance level IDR 2,270, di mana berpeluang untuk berlanjut menuju resistance level IDR 2,370 hingga IDR 2,410.

Stochastic yang mengalami bullish crossover berpeluang membawa harga menguat.

- Rekomendasi** : Speculative Buy
- Entry Level** : 2,260-2,280
- Take Profit** : 2,370-2,410
- Stop Loss** : 2,220

PT Bank Mandiri Persero Tbk

(BMRI) β : 1.40 Price : 6,775 TP: 7,000-7,150



BMRI pada perdagangan kemarin ditutup menguat berada di level IDR 6,775.

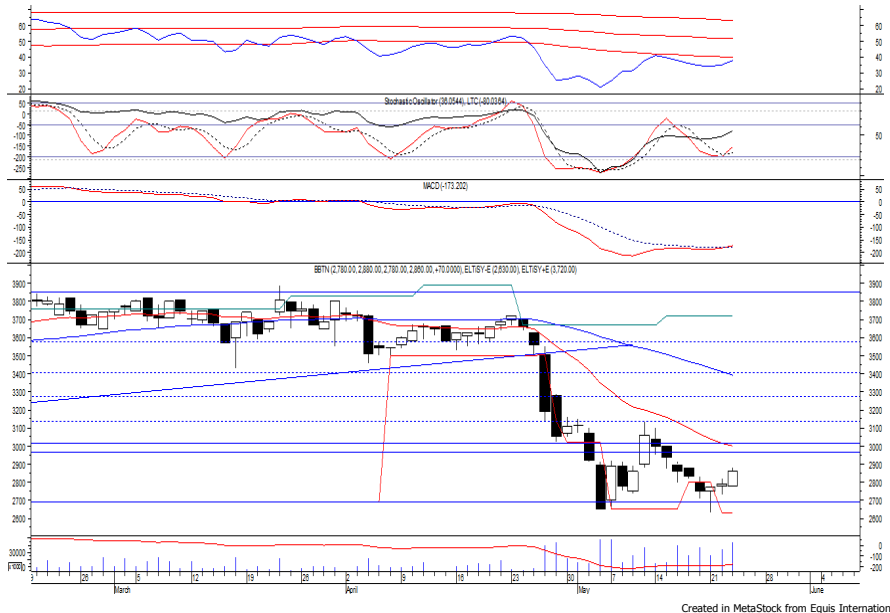
Harga tampak sedang mencoba untuk bertahan di atas support level IDR 6,600, di mana berpeluang untuk berlanjut menuju resistance level IDR 7,000 hingga IDR 7,150.

Stochastic yang mengindikasikan terjadinya bullish crossover di wilayah over-sold memberikan peluang untuk menguat. Kecuali harga berbalik melemah hingga di bawah IDR 6,600.

Rekomendasi : Speculative Buy
Entry Level : 6,700-6,775
Take Profit : 7,000-7,150
Stop Loss : 6,575

PT Bank Tabungan Negara Persero Tbk

(BBTN) β : 1.35 Price : 2,860 TP: 2,960-3,010



BBTN mampu ditutup menguat pada perdagangan kemarin berada di level IDR 2,860.

Harga berpeluang untuk melanjutkan rebound yang terjadi dan bergerak menuju resistance level di IDR 2,960 hingga IDR 3,010.

Stochastic yang mengalami bullish crossover memberikan peluang adanya penguatan. Namun jika harga berbalik melemah dapat bergerak menuju support level IDR 2,690.

Rekomendasi : Trading Buy
Entry Level : 2,830-2,860
Take Profit : 2,960-3,010
Stop Loss : 2,790

Research Division

Danny Eugene	Strategist, Construction, Cement, Automotive	danny.eugene@megasekuritas.id	+62 21 7917 5599	62431
Helen Vincentia	Consumer Goods, Retail	helen.vincentia@megasekuritas.id	+62 21 7917 5599	62035
Fikri Syaryadi	Banking, Telco, Transportation	fikri@megasekuritas.id	+62 21 7917 5599	62035
Adrian M. Priyatna	Property, Hospital	adrian@megasekuritas.id	+62 21 7917 5599	62425
Novilya Wiyatno	Mining, Media, Plantation	novilya@megasekuritas.id	+62 21 7917 5599	62425
Qolbie Ardie	Economist	qolbie@megasekuritas.id	+62 21 7917 5599	62143
Fadlillah Qudsi	Technical Analyst	fadlillah.qudsi@megasekuritas.id	+62 21 7917 5599	62035

Retail Equity Sales Division

Hendry Kuswari	Head of Sales, Trading & Dealing	hendry@megasekuritas.id	+62 21 7917 5599	62038
Dewi Suryani	Retail Equity Sales	dewi.suryani@megasekuritas.id	+62 21 7917 5599	62441
Brema Setyawan	Retail Equity Sales	brema.setyawan@megasekuritas.id	+62 21 7917 5599	62126
Ety Sulistyowati	Retail Equity Sales	ety.sulistyowati@megasekuritas.id	+62 21 7917 5599	62408
Fadel M. Iqbal	Retail Equity Sales	fadel@megasekuritas.id	+62 21 7917 5599	62164
Andri Sumarno	Retail Equity Sales	andri@megasekuritas.id	+62 21 7917 5599	62045
Harini Citra	Retail Equity Sales	harini@megasekuritas.id	+62 21 7917 5599	62161
Syaifathir Muhammad	Retail Equity Sales	fathir@megasekuritas.id	+62 21 7917 5599	62179

Corporate Equity Sales Division

Rachmadian Iskandar Z	Corporate Equity Sales	rachmadian@megasekuritas.id	+62 21 7917 5599	62402
Ratna Wijayanti	Corporate Equity Sales	ratna.wijayanti@megasekuritas.id	+62 21 7917 5599	62055
Reza Mahendra	Corporate Equity Sales	reza.mahendra@megasekuritas.id	+62 21 7917 5599	62409

Fixed Income Sales & Trading

Tel. +62 7917 5559-62 Fax. +62 21 7917 5965

Investment Banking

Tel. +62 21 7917 5599 Fax. +62 21 7919 3900

Kantor Pusat

 Menara Bank Mega Lt. 2
 Jl. Kapt P. Tendean, Kav 12-14 A
 Jakarta Selatan 12790

Pondok Indah

 Plaza 5 Pondok Indah Blok D No. 15 Lt. 2
 Jl. Margaguna Raya Pondok Indah
 Jakarta Selatan

Kelapa Gading

 Ruko Gading Bukit Indah Lt.2
 Jl. Bukit Gading Raya Blok A No. 26, Kelapa Gading
 Jakarta Utara - 14240

DISCLAIMER

This Document is for information only and for the use of the recipient. It is not to be reproduced or copied or made available to others. Under no circumstances is it to be considered as an offer to sell or solicitation to buy any security. Any recommendation contained in this report may not be suitable for all investors and strictly a personal view and should not be used as a sole judgment for investment. Moreover, although the information contained herein has been obtained from sources believed to be reliable, its accuracy, completeness and reliability cannot be guaranteed. All rights reserved by PT Mega Capital Sekuritas.