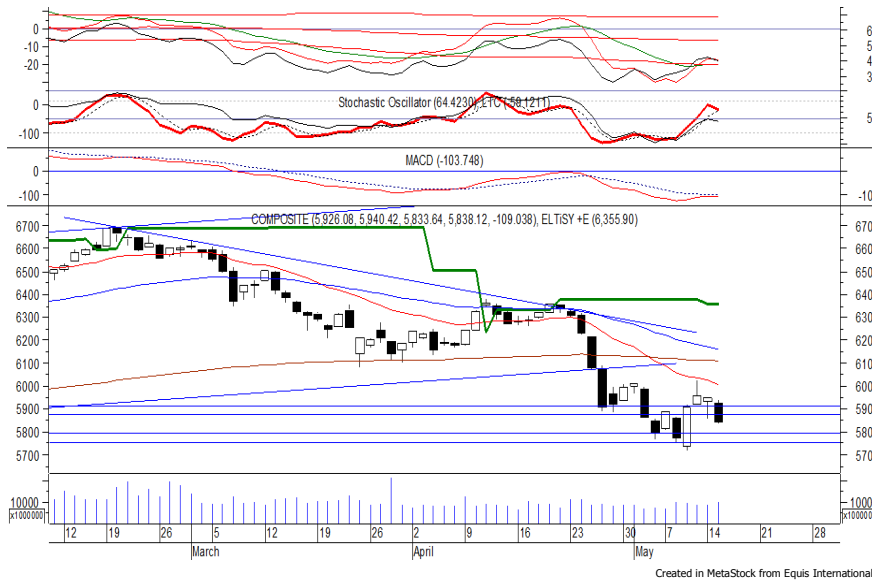


Indeks Harga Saham Gabungan (IHSG)

(IHSG)

Range : 5,795 — 5,880



IHSG pada perdagangan kemarin ditutup melemah berada di level 5,836.

Indeks berpotensi untuk kembali melanjutkan pelemahannya dan bergerak menuju support level 5,795 hingga 5,750.

Stochastic yang mengindikasikan bearish crossover berpotensi membawa indeks melemah, namun jika indeks berbalik menguat maka berpeluang mengalami konsolidasi menguji resistance level 5,880.

Hari ini diperkirakan indeks bergerak fluktuatif cenderung melemah terbatas.

Level	Support	Resistance
I	5,795	5,880
II	5,750	5,910
III	5,720	5,950

Top Active			Top Foreign Buy			Top Foreign Sell			Top Leading		
Code	Close	Freq	Code	Close	Volume	Code	Close	Volume	Code	IDX Pts	Chg (%)
TLKM	3,370	19,761	BUMI	254	21,475,700	TLKM	3,370	-103,690,800	INKP	3.3	5.0
TAXI	135	18,282	BHIT	111	15,936,800	BBRI	3,070	-58,401,600	TKIM	2.2	8.0
INKP	14,200	11,230	TRAM	380	14,055,000	EXCL	1,750	-43,199,559	MABA	2.2	23.3
BBCA	22,200	10,263	ERAA	2,000	7,406,300	ADRO	1,715	-28,298,900	FREN	1.6	25.8
EXCL	1,750	9,608	INKP	14,200	7,061,100	BMRI	6,850	-25,192,500	INDY	1.2	7.0
BBRI	3,070	9,433	DMAS	144	6,822,900	SSMS	1,115	-22,072,500	Top Lagging		
BMRI	6,850	8,341	PGAS	1,875	4,859,500	KLBF	1,385	-15,948,800	Code	IDX Pts	Chg (%)
TRAM	380	8,202	ANTM	820	2,841,300	BNGA	925	-14,484,600	BBCA	-17.0	-3.4
ADRO	1,715	7,594	JRPT	795	2,559,600	PWON	525	-13,269,300	TLKM	-15.4	-4.8
AISA	515	7,289	BBNI	8,075	2,195,300	BRMS	69	-6,893,600	BMRI	-14.5	-4.9
									BBRI	-13.1	-3.8
									UNVR	-12.8	-3.8

PT Unilever Indonesia Tbk

(UNVR) β :

1.07 Price : 47,450 BF: 45,650



UNVR ditutup melemah pada perdagangan kemarin berada di level IDR 47,450.

Harga tampak belum mampu melewati resistance level IDR 49,500, di mana berpotensi melanjutkan pelemahannya menuju support level IDR 45,650.

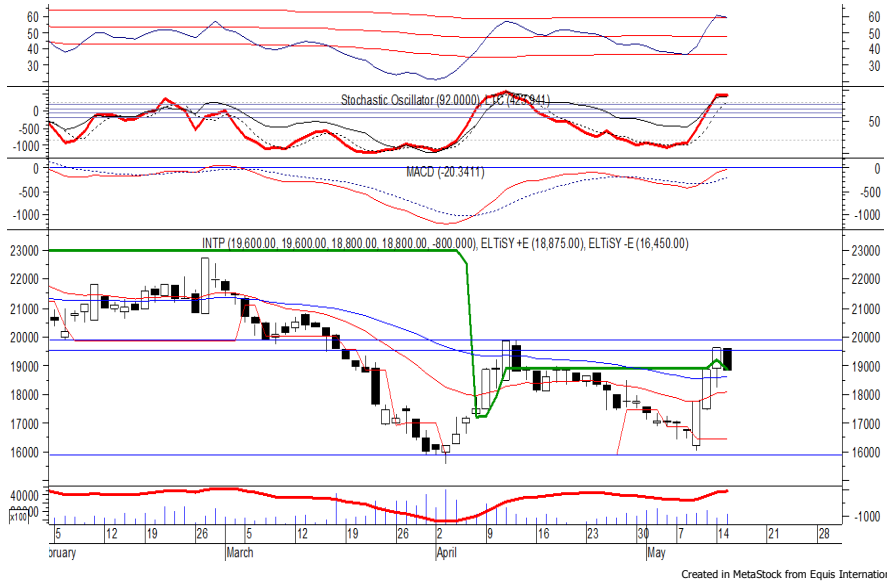
Stochastic yang mengalami bearish crossover berpotensi membawa harga kembali melemah. Kecuali harga berbalik menguat di atas IDR 49,500.

- Rekomendasi** : Sell on Strength
- Exit Level** : 48,350-47,925
- Bottom Fishing** : 45,650
- Buy Back** : 49,600

PT Indoement Tunggal Prakarsa Tbk

(INTP) β :

1.31 Price : 18,800 BF: 18,000-17,700



INTP ditutup melemah pada perdagangan kemarin berada di level IDR 18,800.

Harga tampak belum mampu melewati resistance level IDR 19,600, di mana berpotensi melanjutkan pelemahannya menuju support level IDR 18,000 hingga IDR 17,700.

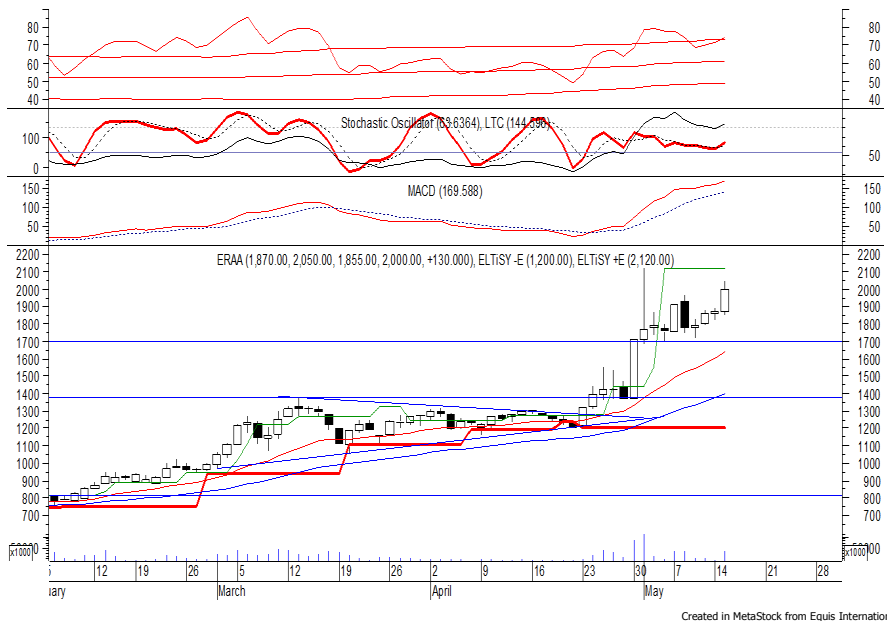
Stochastic yang memasuki wilayah overbought berpotensi membawa harga melemah. Kecuali harga mampu menguat di atas IDR 19,600.

- Rekomendasi** : Sell on Strength
- Exit Level** : 19,200-18,900
- Bottom Fishing** : 18,000-17,700
- Buy Back** : 19,700

PT Erajaya Swasembada Tbk

(ERAA) β :

0.38 Price : 2,000 TP: 2,120



ERAA mampu ditutup menguat pada perdagangan kemarin berada di level IDR 2,000.

Harga bergerak melewati resistance level IDR 1,965, di mana berpeluang untuk dapat melanjutkan penguatannya menuju level berikutnya di IDR 2,120.

Akan tetapi RSI yang memasuki wilayah overbought berpotensi menghambat laju penguatan harga yang jika berbalik melemah dapat menguji support level IDR 1,855.

- Rekomendasi** : Trading Buy
- Entry Level** : 1,965-2,000
- Take Profit** : 2,120
- Stop Loss** : 1,930

PT Telekomunikasi Indonesia Persero Tbk

(TLKM) β :

0.93 Price : 3,370 TP: 3,520-3,550



TLKM kembali ditutup melemah pada perdagangan kemarin berada di level IDR 3,370.

Harga tampak sedang menguji support level uptrend-line, di mana berpeluang mengalami rebound menuju resistance level IDR 3,520 hingga IDR 3,550.

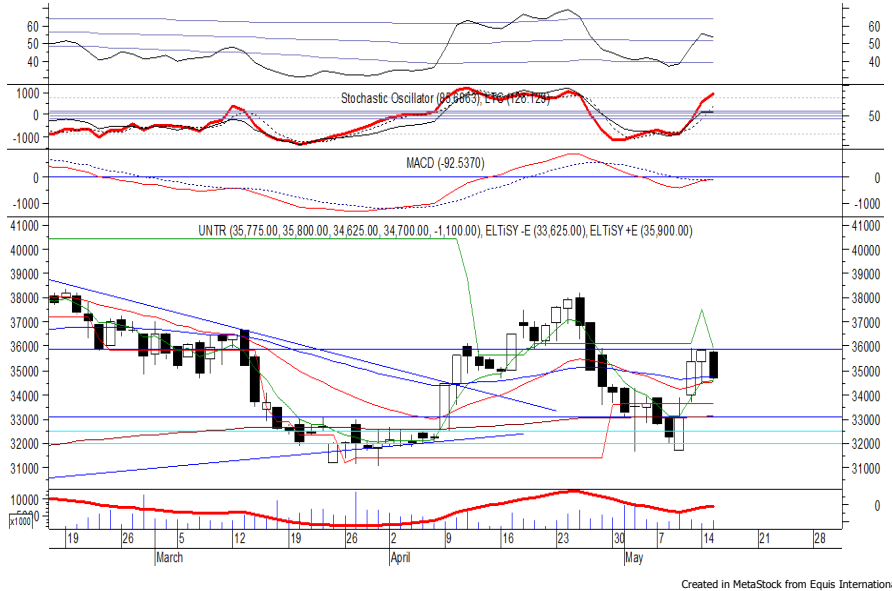
Stochastic mulai menunjukkan kejenuhan harga terhadap aksi jual dan berpeluang menguat. Kecuali harga kembali melemah di bawah IDR 3,290.

Rekomendasi : Buy on Weakness
Entry Level : 3,320-3,350
Take Profit : 3,520-3,550
Stop Loss : 3,280

PT United Tractors Tbk

(UNTR) β :

1.19 Price : 34,700 BF: 34,000-33,625



UNTR ditutup melemah pada perdagangan kemarin berada di level IDR 34,700.

Harga tampak belum mampu melewati resistance level IDR 36,100 di mana berpotensi melanjutkan pelemahannya menuju support level IDR 34,000 hingga IDR 33,625.

Stochastic menunjukkan kejenuhan harga terhadap aksi beli dan berpotensi melemah. Kecuali harga mampu menguat di atas IDR 36,100.

Rekomendasi : Sell on Strength
Exit Level : 35,850-35,400
Bottom Fishing : 34,000-33,625
Buy Back : 36,200

Keterangan:

Speculative Buy : Harga menyentuh support, harga dapat saja meneruskan pelemahan, tetapi berpotensi rebound jika harga gagal break support.

Buy : Harga bergerak rebound meninggalkan support level.

Trading Buy : Harga masih berpotensi naik, tetapi sudah mendekati resistance level.

Sell : Harga telah mencapai resistance level.

Rekomendasi berdasarkan candlestick berlaku sampai 5 atau 8 hari ke depan (maksimal 10 hari), selebihnya dapat diartikan bahwa formasi candlestick gagal.

Research Division

Danny Eugene	Strategist, Construction, Cement, Automotive	danny.eugene@megasekuritas.id	+62 21 7917 5599	62431
Helen Vincentia	Consumer Goods, Retail	helen.vincentia@megasekuritas.id	+62 21 7917 5599	62035
Fikri Syaryadi	Banking, Telco, Transportation	fikri@megasekuritas.id	+62 21 7917 5599	62035
Adrian M. Priyatna	Property, Hospital	adrian@megasekuritas.id	+62 21 7917 5599	62425
Novilya Wiyatno	Mining, Media, Plantation	novilya@megasekuritas.id	+62 21 7917 5599	62425
Qolbie Ardie	Economist	qolbie@megasekuritas.id	+62 21 7917 5599	62143
Fadlillah Qudsi	Technical Analyst	fadlillah.qudsi@megasekuritas.id	+62 21 7917 5599	62035

Retail Equity Sales Division

Hendry Kuswari	Head of Sales, Trading & Dealing	hendry@megasekuritas.id	+62 21 7917 5599	62038
Dewi Suryani	Retail Equity Sales	dewi.suryani@megasekuritas.id	+62 21 7917 5599	62441
Brema Setyawan	Retail Equity Sales	brema.setyawan@megasekuritas.id	+62 21 7917 5599	62126
Ety Sulistyowati	Retail Equity Sales	ety.sulistyowati@megasekuritas.id	+62 21 7917 5599	62408
Fadel M. Iqbal	Retail Equity Sales	fadel@megasekuritas.id	+62 21 7917 5599	62164
Andri Sumarno	Retail Equity Sales	andri@megasekuritas.id	+62 21 7917 5599	62045
Harini Citra	Retail Equity Sales	harini@megasekuritas.id	+62 21 7917 5599	62161
Syaifathir Muhammad	Retail Equity Sales	fathir@megasekuritas.id	+62 21 7917 5599	62179

Corporate Equity Sales Division

Rachmadian Iskandar Z	Corporate Equity Sales	rachmadian@megasekuritas.id	+62 21 7917 5599	62402
Ratna Wijayanti	Corporate Equity Sales	ratna.wijayanti@megasekuritas.id	+62 21 7917 5599	62055
Reza Mahendra	Corporate Equity Sales	reza.mahendra@megasekuritas.id	+62 21 7917 5599	62409

Fixed Income Sales & Trading

Tel. +62 7917 5559-62 Fax. +62 21 7917 5965

Investment Banking

Tel. +62 21 7917 5599 Fax. +62 21 7919 3900

Kantor Pusat

 Menara Bank Mega Lt. 2
 Jl. Kapt P. Tendean, Kav 12-14 A
 Jakarta Selatan 12790

Pondok Indah

 Plaza 5 Pondok Indah Blok D No. 15 Lt. 2
 Jl. Margaguna Raya Pondok Indah
 Jakarta Selatan

Kelapa Gading

 Ruko Gading Bukit Indah Lt.2
 Jl. Bukit Gading Raya Blok A No. 26, Kelapa Gading
 Jakarta Utara - 14240

DISCLAIMER

This Document is for information only and for the use of the recipient. It is not to be reproduced or copied or made available to others. Under no circumstances is it to be considered as an offer to sell or solicitation to buy any security. Any recommendation contained in this report may not be suitable for all investors and strictly a personal view and should not be used as a sole judgment for investment. Moreover, although the information contained herein has been obtained from sources believed to be reliable, its accuracy, completeness and reliability cannot be guaranteed. All rights reserved by PT Mega Capital Sekuritas.