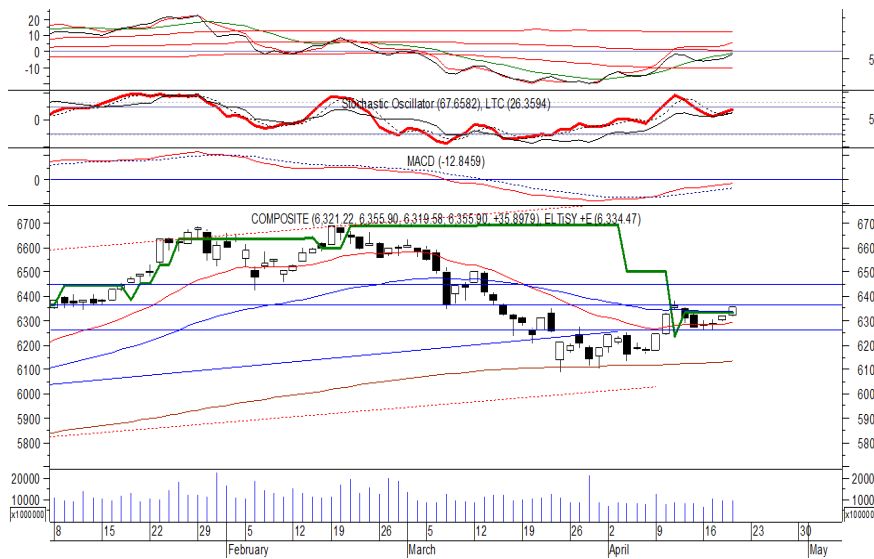


Indeks Harga Saham Gabungan (IHSG)

(IHSG)

Range : 6,320 — 6,385



IHSG kembali ditutup menguat pada perdagangan kemarin berada di level 6,355. Indeks tampak sedang mencoba untuk melewati EMA 50, yang jika mampu bertahan di atasnya, maka berpeluang menguji resistance level 6,385.

Akan tetapi jika indeks berbalik melemah maka berpotensi mengalami konsolidasi dengan menguji support level 6,320.

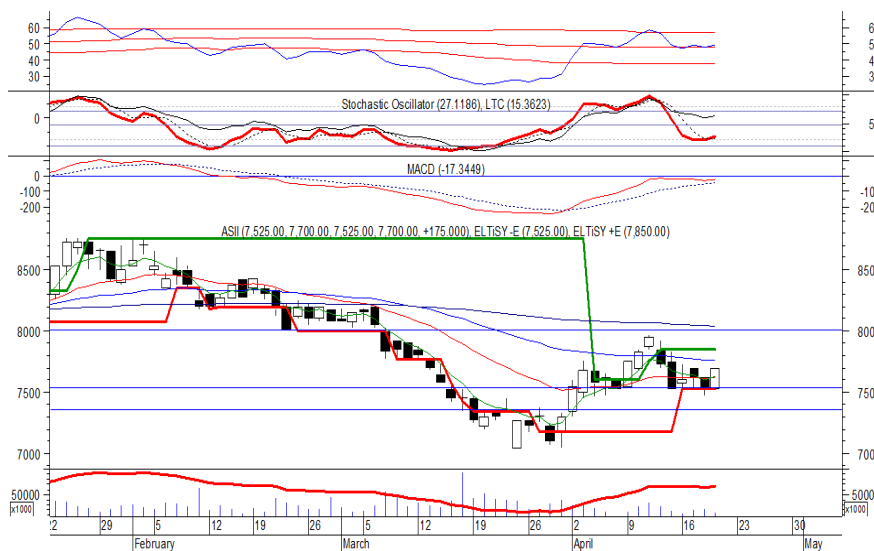
Hari ini indeks diperkirakan kembali fluktuatif dengan kecenderungan menguat terbatas.

| Level | Support | Resistance |
|-------|---------|------------|
| I | 6,320 | 6,385 |
| II | 6,290 | 6,415 |
| III | 6,260 | 6,445 |

| Top Active | | | Top Foreign Buy | | | Top Foreign Sell | | | Top Leading | | |
|------------|-------|--------|-----------------|-------|------------|------------------|-------|-------------|-------------|---------|---------|
| Code | Close | Freq | Code | Close | Volume | Code | Close | Volume | Code | IDX Pts | Chg (%) |
| LMAS | 80 | 28,770 | ANTM | 935 | 51,553,900 | SRIL | 356 | -39,280,200 | ASII | 6.4 | 2.3 |
| TIFA | 266 | 17,075 | BBRI | 3,630 | 39,224,554 | MEDC | 1,300 | -24,509,300 | HMSP | 4.2 | 1.0 |
| JPRS | 164 | 15,624 | BWPT | 298 | 29,044,900 | AGRO | 378 | -13,138,200 | INCO | 3.7 | 12.4 |
| MNCN | 1,405 | 13,045 | INCO | 3,800 | 25,084,800 | VIVA | 408 | -12,335,300 | UNVR | 3.6 | 1.0 |
| HELI | 300 | 12,961 | BUMI | 272 | 22,440,900 | BBTN | 3,660 | -8,793,200 | TKIM | 3.4 | 15.8 |
| IKAI | 610 | 11,002 | TLKM | 3,780 | 11,111,531 | KRAS | 505 | -8,781,000 | Top Lagging | | |
| TKIM | 9,000 | 9,004 | TRAM | 346 | 10,821,500 | BKSL | 198 | -8,631,200 | Code | IDX Pts | Chg (%) |
| PTBA | 3,280 | 8,870 | TINS | 1,120 | 10,599,200 | BBKP | 480 | -5,779,200 | BBRI | -3.3 | -0.8 |
| ANTM | 935 | 8,623 | BSDE | 1,845 | 10,277,300 | PNLF | 256 | -5,649,500 | PTBA | -2.1 | -5.8 |
| INCO | 3,800 | 7,419 | ENRG | 238 | 8,920,600 | PPRO | 185 | -5,345,800 | UNTR | -1.9 | -1.6 |
| | | | | | | | | | TRAM | -1.1 | -6.5 |
| | | | | | | | | | SMBR | -0.8 | -2.4 |

PT Astra International Tbk

(ASII) β : 1.37 Price : 7,700 TP: 7,900-8,000



ASII pada perdagangan kemarin ditutup menguat berada di level IDR 7,700.

Harga tampak belum mampu untuk melewati support level IDR 7,525, di mana berpeluang melanjutkan rebound menuju resistance level IDR 7,900 hingga IDR 8,000.

Stochastic yang mengalami bullish crossover memberikan peluang untuk menguat. Kecuali harga berbalik melemah di bawah IDR 7,525.

- Rekomendasi** : Trading Buy
- Entry Level** : 7,625-7,700
- Take Profit** : 7,900-8,000
- Stop Loss** : 7,500

PT Media Nusantara Citra Tbk

(MNCN) β :

1.02 Price : 1,405

TP: 1,455-1,480



MNCN mampu ditutup menguat pada perdagangan kemarin berada di level IDR 1,405.

Harga berpeluang untuk dapat melanjutkan rebound yang terjadi dan bergerak menuju resistance level IDR 1,455 hingga IDR 1,480.

Candle yang membentuk formasi *bullish harami* memberikan peluang terjadinya penguatan. Kecuali harga berbalik melemah hingga di bawah IDR 1,385/ IDR 1,370.

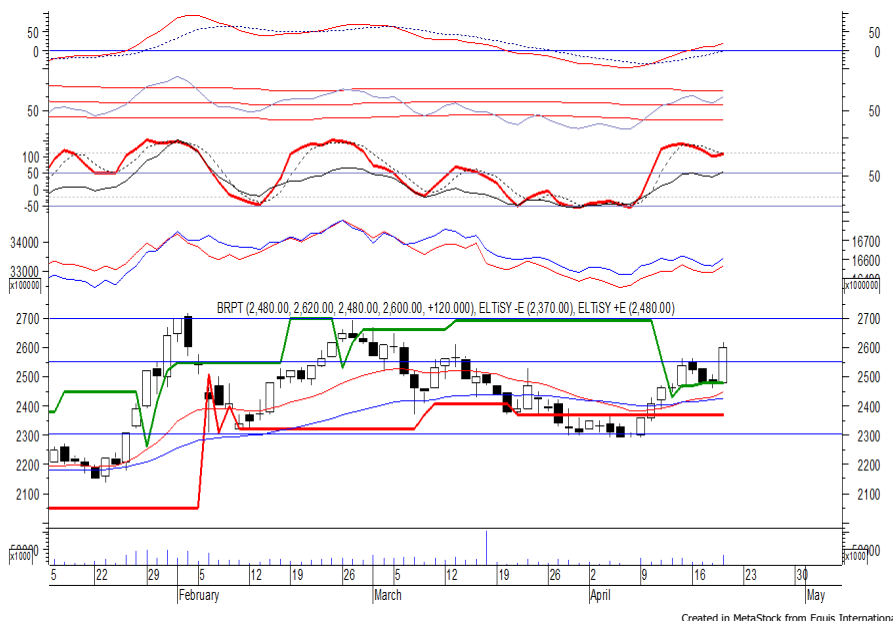
Rekomendasi : Speculative Buy
Entry Level : 1,395-1,405
Take Profit : 1,455-1,480
Stop Loss : 1,380/1,365

PT Barito Pacific Tbk

(BRPT) β :

0.29 Price : 2,600

TP: 2,700



BRPT mampu ditutup menguat pada perdagangan kemarin berada di level IDR 2,600.

Harga tampak sedang bergerak melewati resistance level IDR 2,550, di mana berpeluang untuk berlanjut menuju level berikutnya di IDR 2,700.

Candle yang membentuk formasi *rising three methods* memberikan peluang penguatan.

Kecuali harga berbalik melemah hingga di bawah IDR 2,550.

Rekomendasi : Trading Buy
Entry Level : 2,570-2,600
Take Profit : 2,700
Stop Loss : 2,545

PT Indo Tambangraya Megah Tbk

(ITMG) β :

0.88 Price : 27,875 TP: 28,750-29,450



ITMG pada perdagangan kemarin ditutup menguat berada di level IDR 27,875.

Harga tampak belum mampu untuk melewati support level yang berada di IDR 26,875, di mana berpeluang melanjutkan rebound yang terjadi menuju resistance level IDR 28,750 hingga IDR 29,450.

Stochastic yang mengalami bullish crossover memberikan peluang penguatan.

Rekomendasi : Trading Buy
Entry Level : 27,700-27,900
Take Profit : 28,750-29,450
Stop Loss : 27,400

PT Semen Indonesia Persero Tbk

(SMGR) β :

1.25 Price : 10,000 TP: 10,350-10,500



Sempat dibuka melemah di awal perdagangan kemarin, SMGR akhirnya ditutup menguat berada di level IDR 10,000.

Harga berpeluang untuk melanjutkan penguatannya setelah belum mampu melewati support level yang berada di IDR 9,825, di mana berpeluang menuju resistance level IDR 10,350 hingga IDR 10,500. *Bullish engulfing* yang terbentuk pada candle memberikan peluang terjadinya penguatan.

Rekomendasi : Speculative Buy
Entry Level : 9,900-10,000
Take Profit : 10,350-10,500
Stop Loss : 9,775

Keterangan:

Speculative Buy : Harga menyentuh support, harga dapat saja meneruskan pelemahan, tetapi berpotensi rebound jika harga gagal break support.

Buy : Harga bergerak rebound meninggalkan support level.

Trading Buy : Harga masih berpotensi naik, tetapi sudah mendekati resistance level.

Sell : Harga telah mencapai resistance level.

Rekomendasi berdasarkan candlestick berlaku sampai 5 atau 8 hari ke depan (maksimal 10 hari), selebihnya dapat diartikan bahwa formasi candlestick gagal.

Research Division

| | | | | |
|--------------------|--|----------------------------------|------------------|-------|
| Danny Eugene | Strategist, Construction, Cement, Automotive | danny.eugene@megasekuritas.id | +62 21 7917 5599 | 62431 |
| Helen Vincentia | Consumer Goods, Retail | helen.vincentia@megasekuritas.id | +62 21 7917 5599 | 62035 |
| Fikri Syaryadi | Banking, Telco, Transportation | fikri@megasekuritas.id | +62 21 7917 5599 | 62035 |
| Adrian M. Priyatna | Property, Hospital | adrian@megasekuritas.id | +62 21 7917 5599 | 62425 |
| Novilya Wiyatno | Mining, Media, Plantation | novilya@megasekuritas.id | +62 21 7917 5599 | 62425 |
| Qolbie Ardie | Economist | qolbie@megasekuritas.id | +62 21 7917 5599 | 62143 |
| Fadlillah Qudsi | Technical Analyst | fadlillah.qudsi@megasekuritas.id | +62 21 7917 5599 | 62035 |

Retail Equity Sales Division

| | | | | |
|---------------------|----------------------------------|-----------------------------------|------------------|-------|
| Hendry Kuswari | Head of Sales, Trading & Dealing | hendry@megasekuritas.id | +62 21 7917 5599 | 62038 |
| Dewi Suryani | Retail Equity Sales | dewi.suryani@megasekuritas.id | +62 21 7917 5599 | 62441 |
| Brema Setyawan | Retail Equity Sales | brema.setyawan@megasekuritas.id | +62 21 7917 5599 | 62126 |
| Ety Sulistyowati | Retail Equity Sales | ety.sulistyowati@megasekuritas.id | +62 21 7917 5599 | 62408 |
| Fadel M. Iqbal | Retail Equity Sales | fadel@megasekuritas.id | +62 21 7917 5599 | 62164 |
| Andri Sumarno | Retail Equity Sales | andri@megasekuritas.id | +62 21 7917 5599 | 62045 |
| Harini Citra | Retail Equity Sales | harini@megasekuritas.id | +62 21 7917 5599 | 62161 |
| Syaifathir Muhammad | Retail Equity Sales | fathir@megasekuritas.id | +62 21 7917 5599 | 62179 |

Corporate Equity Sales Division

| | | | | |
|-----------------------|------------------------|----------------------------------|------------------|-------|
| Rachmadian Iskandar Z | Corporate Equity Sales | rachmadian@megasekuritas.id | +62 21 7917 5599 | 62402 |
| Ratna Wijayanti | Corporate Equity Sales | ratna.wijayanti@megasekuritas.id | +62 21 7917 5599 | 62055 |
| Reza Mahendra | Corporate Equity Sales | reza.mahendra@megasekuritas.id | +62 21 7917 5599 | 62409 |

Fixed Income Sales & Trading

Tel. +62 7917 5559-62 Fax. +62 21 7917 5965

Investment Banking

Tel. +62 21 7917 5599 Fax. +62 21 7919 3900

Kantor Pusat

 Menara Bank Mega Lt. 2
 Jl. Kapt P. Tendean, Kav 12-14 A
 Jakarta Selatan 12790

Pondok Indah

 Plaza 5 Pondok Indah Blok D No. 15 Lt. 2
 Jl. Margaguna Raya Pondok Indah
 Jakarta Selatan

Kelapa Gading

 Ruko Gading Bukit Indah Lt.2
 Jl. Bukit Gading Raya Blok A No. 26, Kelapa Gading
 Jakarta Utara - 14240

DISCLAIMER

This Document is for information only and for the use of the recipient. It is not to be reproduced or copied or made available to others. Under no circumstances is it to be considered as an offer to sell or solicitation to buy any security. Any recommendation contained in this report may not be suitable for all investors and strictly a personal view and should not be used as a sole judgment for investment. Moreover, although the information contained herein has been obtained from sources believed to be reliable, its accuracy, completeness and reliability cannot be guaranteed. All rights reserved by PT Mega Capital Sekuritas.