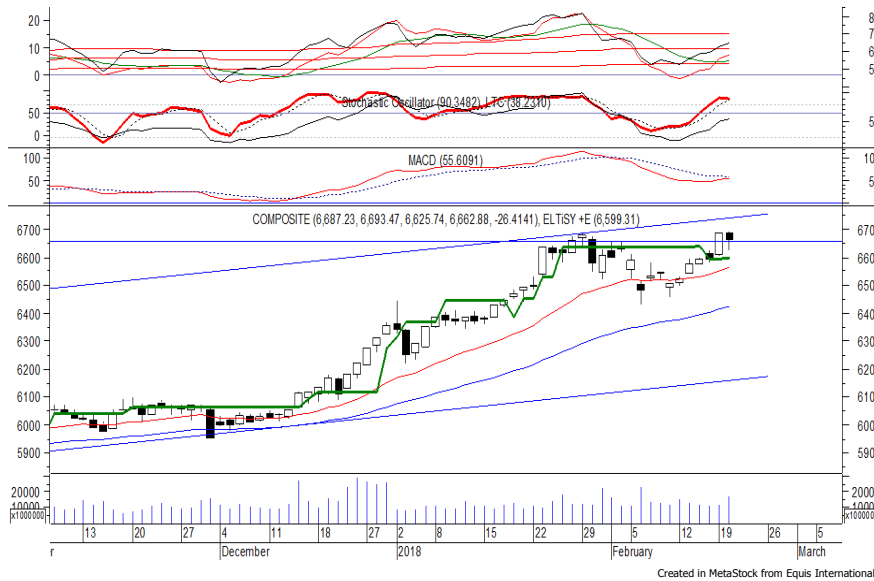


Indeks Harga Saham Gabungan

(IHSG)

Range : 6,640 — 6,695



IHSG pada perdagangan kemarin ditutup melemah berada di level 6,662.

Indeks berpotensi untuk kembali melanjutkan pelemahannya menuju support level 6,640 hingga 6,610.

Stochastic yang mengalami kejenuhan terhadap aksi beli berpotensi membawa indeks melemah. Namun jika indeks berbalik menguat, dapat menguji resistance level 6,695.

Hari ini diperkirakan indeks kembali fluktuatif dengan kecenderungan melemah terbatas.

| Level | Support | Resistance |
|-------|---------|------------|
| I | 6,640 | 6,695 |
| II | 6,610 | 6,725 |
| III | 6,575 | 6,745 |

| Top Active | | | Top Foreign Buy | | | Top Foreign Sell | | | Top Leading | | |
|------------|-------|--------|-----------------|-------|------------|------------------|-------|-------------|-------------|---------|---------|
| Code | Close | Freq | Code | Close | Volume | Code | Close | Volume | Code | IDX Pts | Chg (%) |
| BEKS | 50 | 16,309 | ELSA | 490 | 28,950,300 | BEKS | 50 | -85,051,600 | BMRI | 23.8 | 6.8 |
| VICO | 312 | 15,504 | BMRI | 9,050 | 19,002,000 | BBRI | 3,800 | -46,437,195 | TLKM | 1.8 | 0.5 |
| ENRG | 262 | 15,491 | TLKM | 4,070 | 12,509,900 | HMSP | 4,830 | -40,588,700 | BFIN | 1.3 | 11.8 |
| ELSA | 490 | 14,829 | SSIA | 610 | 12,053,200 | LPKR | 505 | -23,881,500 | BTPN | 1.0 | 6.2 |
| WSBP | 476 | 11,523 | BBNI | 9,925 | 11,862,400 | BRMS | 85 | -22,680,000 | BNII | 1.0 | 5.5 |
| PGAS | 2,630 | 10,995 | ENRG | 262 | 10,867,200 | MLPL | 182 | -15,541,800 | Top Lagging | | |
| BMTR | 650 | 10,738 | KREN | 550 | 8,674,500 | WIKA | 1,970 | -12,893,600 | Code | IDX Pts | Chg (%) |
| BUMI | 328 | 9,520 | BKSL | 212 | 8,243,200 | DILD | 362 | -11,875,700 | HMSP | -9.4 | -1.8 |
| BBRI | 3,800 | 8,825 | WSKT | 3,050 | 6,664,000 | BIPI | 90 | -11,692,900 | BBRI | -6.6 | -1.6 |
| IKAI | 404 | 7,783 | IKAI | 404 | 6,221,600 | BJTM | 780 | -10,394,000 | BBCA | -4.9 | -0.9 |
| | | | | | | | | | ASII | -4.5 | -1.5 |
| | | | | | | | | | TPIA | -3.2 | -3.1 |

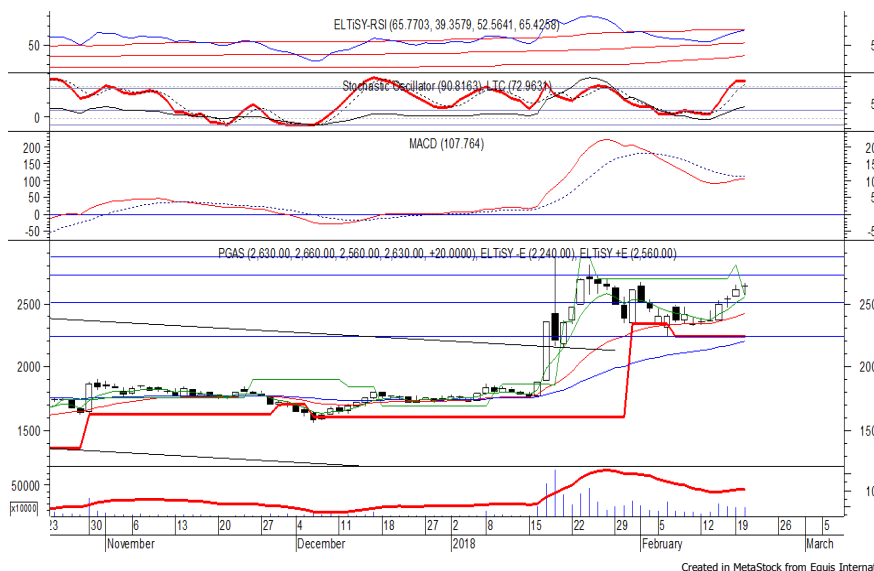
PT Perusahaan Gas Negara Persero T

(PGAS) β :

1.53 Price :

2,630 TP:

2,720-2,750



PGAS pada perdagangan kemarin ditutup menguat tipis berada di level IDR 2,630.

Harga berpotensi untuk dapat melanjutkan penguatannya menuju resistance level IDR 2,720 hingga IDR 2,750.

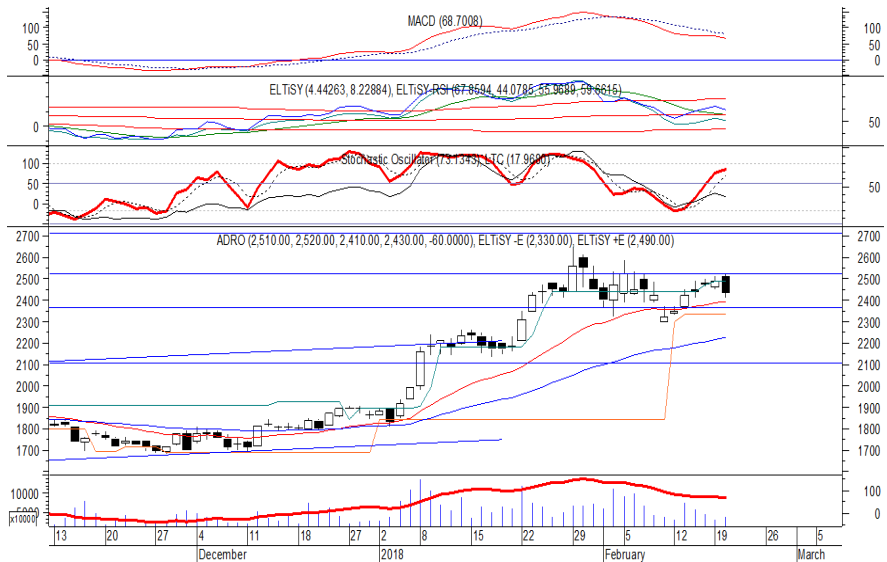
MACD yang mengindikasikan golden cross memberikan peluang untuk menguat, kecuali harga berbalik melemah hingga di bawah IDR 2,560.

- Rekomendasi** : Trading Buy
- Entry Level** : 2,600-2,630
- Take Profit** : 2,720-2,750
- Stop Loss** : 2,550

PT Adaro Energy Tbk

(ADRO) β :

1.08 Price : 2,430 BF: 2,360-2,330



Sempat dibuka menguat di awal perdagangan kemarin, ADRO akhirnya ditutup melemah berada di level IDR 2,430.

Harga tampak belum mampu melewati resistance level IDR 2,520, di mana berpotensi melanjutkan pelemahannya menuju support level IDR 2,360 hingga IDR 2,330.

Candle yang membentuk formasi *bearish engulfing* berpotensi membawa harga melemah.

- Rekomendasi** : Sell on Strength
- Exit Level** : 2,490-2,450
- Bottom Fishing** : 2,360-2,330
- Buy Back** : 2,540

PT AKR Corporindo Tbk

(AKRA) β :

0.96 Price : 5,975 BF: 5,825-5,725



AKRA ditutup melemah pada perdagangan kemarin berada di level IDR 5,975.

Harga berpotensi untuk kembali melanjutkan pelemahannya menuju support level IDR 5,825 hingga IDR 5,725.

Stochastic yang mengalami bearish crossover berpotensi membawa harga melemah.

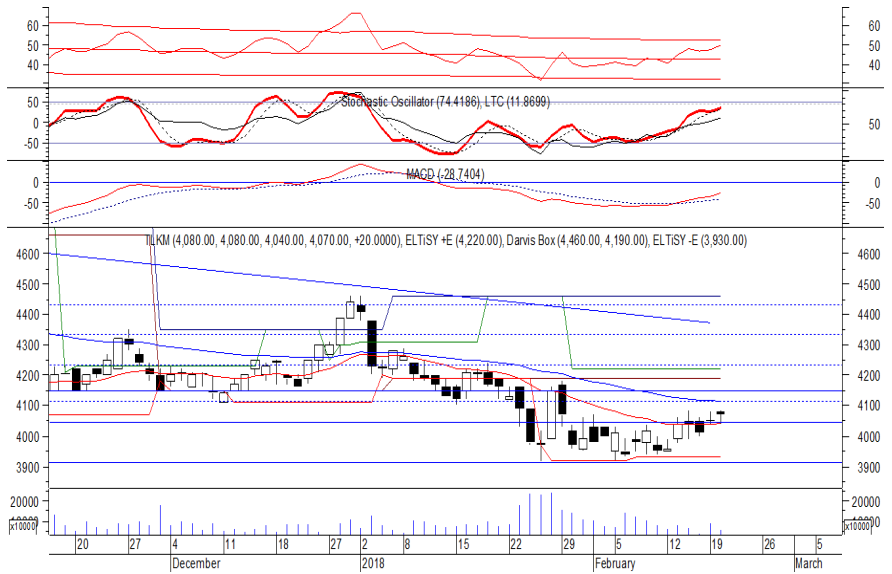
Kecuali harga mampu berbalik menguat hingga di atas IDR 6,200.

- Rekomendasi** : Sell on Strength
- Exit Level** : 6,125-6,050
- Bottom Fishing** : 5,825-5,725
- Buy Back** : 6,225

PT Telekomunikasi Indonesia Persero Tbk

(TLKM) β :

1.12 Price : 4,070 TP: 4,150-4,190



TLKM mampu ditutup menguat pada perdagangan kemarin berada di level IDR 4,070.

Harga tampak sedang mencoba untuk bertahan di atas EMA 20, di mana berpeluang melanjutkan penguatannya menuju resistance level IDR 4,150 hingga IDR 4,190.

MACD yang mengalami golden cross memberikan peluang untuk menguat. Kecuali harga melemah hingga di bawah IDR 4,020.

Rekomendasi : Buy on Weakness
Entry Level : 4,040-4,060
Take Profit : 4,150-4,190
Stop Loss : 4,010

PT Astra International Tbk

(ASII) β :

1.31 Price : 8,300 TP: 8,425-8,525



ASII ditutup melemah pada perdagangan kemarin berada di level IDR 8,300.

Harga tampak mengalami konsolidasi, di mana berpotensi untuk kembali menguji support level IDR 8,200, yang jika mampu bertahan di (atas) level tersebut, berpeluang untuk rebound menuju resistance level IDR 8,425 hingga IDR 8,525.

Stochastic berada pada kecenderungan menguat.

Rekomendasi : Buy on Weakness
Entry Level : 8,200-8,275
Take Profit : 8,425-8,525
Stop Loss : 8,125

Keterangan:

Speculative Buy : Harga menyentuh support, harga dapat saja meneruskan pelemahan, tetapi berpotensi rebound jika harga gagal break support.

Buy : Harga bergerak rebound meninggalkan support level.

Trading Buy : Harga masih berpotensi naik, tetapi sudah mendekati resistance level.

Sell : Harga telah mencapai resistance level.

Rekomendasi berdasarkan candlestick berlaku sampai 5 atau 8 hari ke depan (maksimal 10 hari), selebihnya dapat diartikan bahwa formasi candlestick gagal.

Research Division

| | | | | |
|--------------------|--|----------------------------------|------------------|-------|
| Danny Eugene | Strategist, Construction, Cement, Automotive | danny.eugene@megasekuritas.id | +62 21 7917 5599 | 62431 |
| Helen Vincentia | Consumer Goods, Retail | helen.vincentia@megasekuritas.id | +62 21 7917 5599 | 62035 |
| Fikri Syaryadi | Banking, Telco, Transportation | fikri@megasekuritas.id | +62 21 7917 5599 | 62035 |
| Adrian M. Priyatna | Property, Hospital | adrian@megasekuritas.id | +62 21 7917 5599 | 62425 |
| Novilya Wiyatno | Mining, Media, Plantation | novilya@megasekuritas.id | +62 21 7917 5599 | 62425 |
| Dhian Karyantono | Economist | dhian@megasekuritas.id | +62 21 7917 5599 | 62143 |
| Fadlillah Qudsi | Technical Analyst | fadlillah.qudsi@megasekuritas.id | +62 21 7917 5599 | 62035 |

Retail Equity Sales Division

| | | | | |
|---------------------|----------------------------------|-----------------------------------|------------------|-------|
| Hendry Kuswari | Head of Sales, Trading & Dealing | hendry@megasekuritas.id | +62 21 7917 5599 | 62038 |
| Dewi Suryani | Retail Equity Sales | dewi.suryani@megasekuritas.id | +62 21 7917 5599 | 62441 |
| Brema Setyawan | Retail Equity Sales | brema.setyawan@megasekuritas.id | +62 21 7917 5599 | 62126 |
| Ety Sulistyowati | Retail Equity Sales | ety.sulistyowati@megasekuritas.id | +62 21 7917 5599 | 62408 |
| Fadel M. Iqbal | Retail Equity Sales | fadel@megasekuritas.id | +62 21 7917 5599 | 62164 |
| Andri Sumarno | Retail Equity Sales | andri@megasekuritas.id | +62 21 7917 5599 | 62045 |
| Harini Citra | Retail Equity Sales | harini@megasekuritas.id | +62 21 7917 5599 | 62161 |
| Syaifathir Muhammad | Retail Equity Sales | fathir@megasekuritas.id | +62 21 7917 5599 | 62179 |

Corporate Equity Sales Division

| | | | | |
|-----------------------|------------------------|----------------------------------|------------------|-------|
| Rachmadian Iskandar Z | Corporate Equity Sales | rachmadian@megasekuritas.id | +62 21 7917 5599 | 62402 |
| Ratna Wijayanti | Corporate Equity Sales | ratna.wijayanti@megasekuritas.id | +62 21 7917 5599 | 62055 |
| Reza Mahendra | Corporate Equity Sales | reza.mahendra@megasekuritas.id | +62 21 7917 5599 | 62409 |

Fixed Income Sales & Trading

Tel. +62 7917 5559-62 Fax. +62 21 7917 5965

Investment Banking

Tel. +62 21 7917 5599 Fax. +62 21 7919 3900

Kantor Pusat

Menara Bank Mega Lt. 2
 Jl. Kapt P. Tendean, Kav 12-14 A
 Jakarta Selatan 12790

Pondok Indah

Plaza 5 Pondok Indah Blok D No. 15 Lt. 2
 Jl. Margaguna Raya Pondok Indah
 Jakarta Selatan

Kelapa Gading

Ruko Gading Bukit Indah Lt.2
 Jl. Bukit Gading Raya Blok A No. 26, Kelapa Gading
 Jakarta Utara - 14240

DISCLAIMER

This Document is for information only and for the use of the recipient. It is not to be reproduced or copied or made available to others. Under no circumstances is it to be considered as an offer to sell or solicitation to buy any security. Any recommendation contained in this report may not be suitable for all investors and strictly a personal view and should not be used as a sole judgment for investment. Moreover, although the information contained herein has been obtained from sources believed to be reliable, its accuracy, completeness and reliability cannot be guaranteed. All rights reserved by PT Mega Capital Sekuritas.