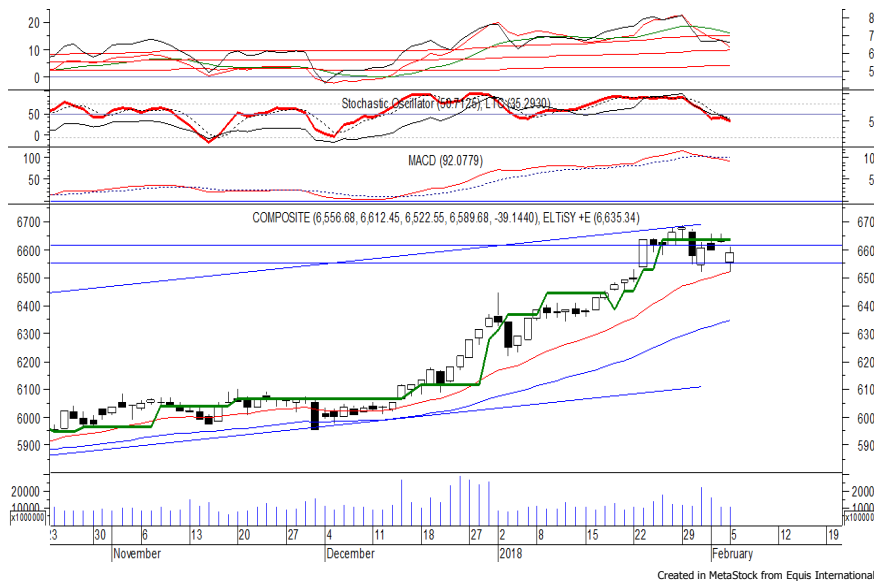


Indeks Harga Saham Gabungan (IHSG)

(IHSG)

Range : 6,550 — 6,615



IHSG ditutup melemah pada perdagangan kemarin berada di level 6,589.

Indeks juga sempat menguji EMA 20 namun belum mampu melewatinya. Hal tersebut memberikan peluang bagi indeks untuk bergerak menguji resistance level 6,615.

Namun MACD yang mengalami death cross berpotensi membawa indeks kembali menguji support level 6,550.

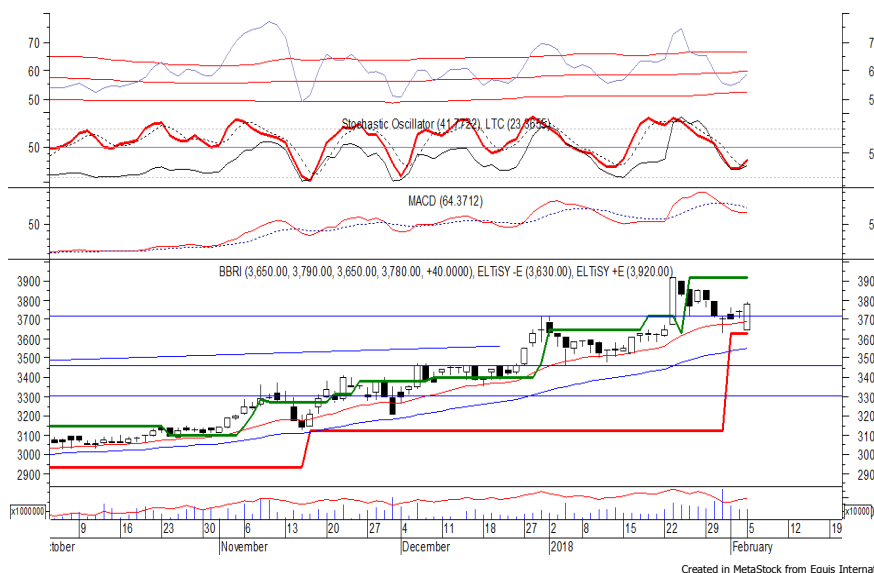
Hari ini diperkirakan indeks bergerak fluktuatif dengan kecenderungan menguat terbatas.

| Level | Support | Resistance |
|-------|---------|------------|
| I | 6,550 | 6,615 |
| II | 6,525 | 6,660 |
| III | 6,500 | 6,680 |

| Top Active | | | Top Foreign Buy | | | Top Foreign Sell | | | Top Leading | | |
|------------|-------|--------|-----------------|-------|------------|------------------|-------|-------------|-------------|---------|---------|
| Code | Close | Freq | Code | Close | Volume | Code | Close | Volume | Code | IDX Pts | Chg (%) |
| TRAM | 306 | 10,239 | BKSL | 179 | 34,442,100 | KLBF | 1,655 | -15,655,600 | HMSP | 9.4 | 1.9 |
| ENRG | 202 | 9,554 | ENRG | 202 | 16,129,300 | AGII | 800 | -14,589,600 | BBRI | 4.4 | 1.1 |
| IKAI | 163 | 9,079 | BNLI | 640 | 12,979,100 | TRAM | 306 | -14,346,700 | ADRO | 1.4 | 2.0 |
| BUMI | 320 | 8,409 | BUMI | 320 | 8,099,000 | CTRA | 1,330 | -13,831,200 | TLKM | 0.9 | 0.3 |
| BKSL | 179 | 8,157 | SMRA | 1,180 | 6,469,100 | HMSP | 4,890 | -12,273,100 | AMRT | 0.7 | 3.3 |
| PGAS | 2,400 | 7,620 | ADRO | 2,520 | 6,318,174 | TINS | 1,020 | -11,552,700 | Top Lagging | | |
| ADRO | 2,520 | 7,310 | DMAS | 197 | 6,214,800 | ASII | 8,525 | -11,487,756 | Code | IDX Pts | Chg (%) |
| BBRI | 3,780 | 7,279 | WSBP | 468 | 6,033,900 | PWON | 680 | -11,328,200 | ASII | -6.4 | -2.0 |
| LEAD | 124 | 6,930 | RAJA | 454 | 5,780,000 | IIKP | 258 | -10,853,400 | UNVR | -6.2 | -1.6 |
| PBRX | 496 | 6,632 | BEST | 302 | 5,393,200 | BBNI | 9,275 | -8,763,700 | BBCA | -3.8 | -0.7 |
| | | | | | | | | | TPIA | -2.4 | -2.3 |
| | | | | | | | | | UNTR | -2.1 | -1.6 |

PT Bank Rakyat Indonesia Persero Tbk

(BBRI) β : 1.36 Price : 3,780 TP: 3,860-3,920



Sempat dibuka melemah di awal perdagangan kemarin, BBRI akhirnya ditutup menguat berada di level IDR 3,780.

Harga berpeluang untuk dapat melanjutkan penguatannya setelah belum mampu melewati EMA 20, di mana berpeluang menuju resistance level IDR 3,860 hingga IDR 3,920.

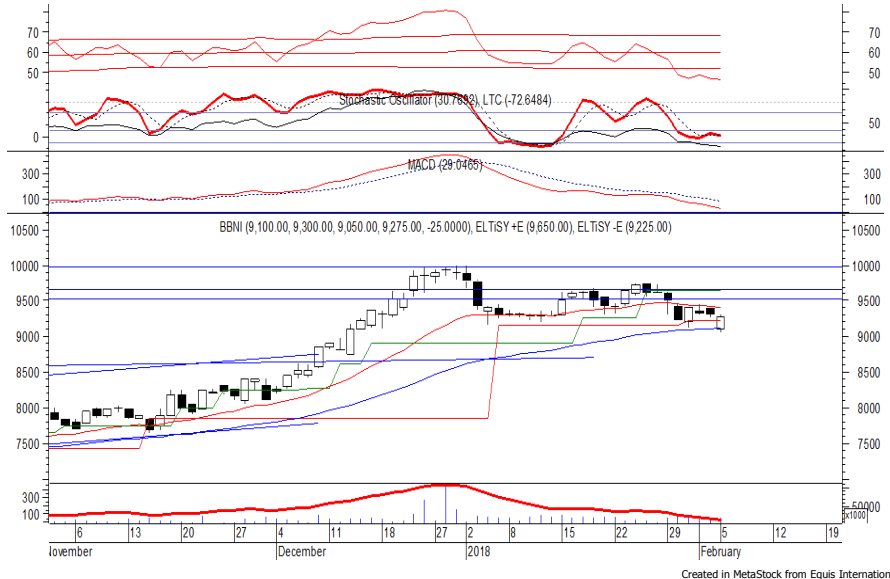
Stochastic yang mengalami bullish crossover berpotensi menguat.

- Rekomendasi** : Speculative Buy
- Entry Level** : 3,750-3,780
- Take Profit** : 3,860-3,920
- Stop Loss** : 3,710

PT Bank Negara Indonesia Persero Tbk

(BBNI) β :

1.29 Price : 9,275 TP: 9,525-9,650



BBNI pada perdagangan kemarin ditutup melemah berada di level IDR 9,275.

Harga juga sempat menguji EMA 50, namun belum mampu untuk melewatinya, di mana berpeluang mengalami rebound menuju resistance level IDR 9,525 hingga IDR 9,650.

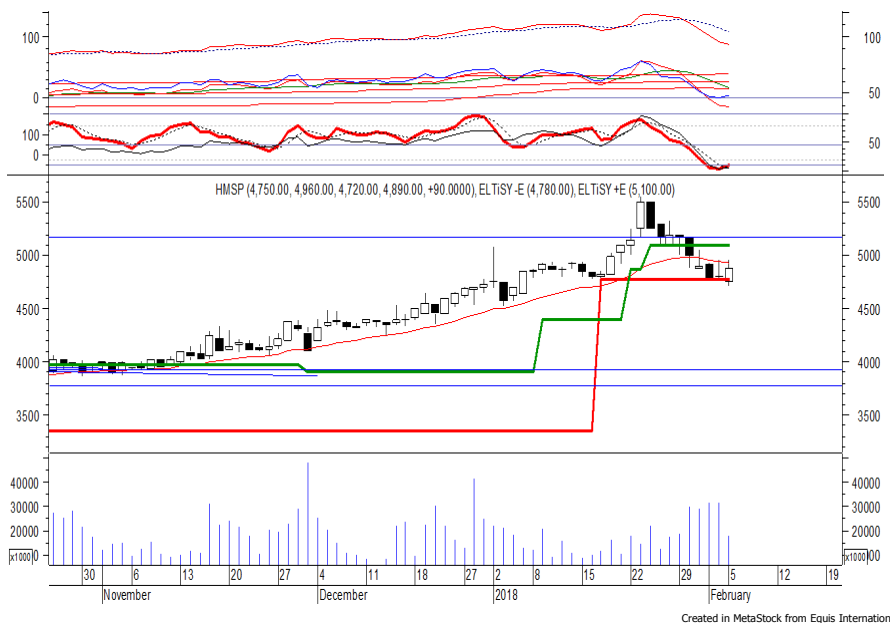
Stochastic yang mengalami bullish crossover juga memberikan peluang untuk menguat.

Rekomendasi : Buy on Weakness
Entry Level : 9,150-9,225
Take Profit : 9,525-9,650
Stop Loss : 9,025

PT Hanjaya Mandala Sampoerna Tbk

(HMSP) β :

1.15 Price : 4,890 TP: 5,100-5,175



HMSP mampu ditutup menguat pada perdagangan kemarin berada di level IDR 4,890.

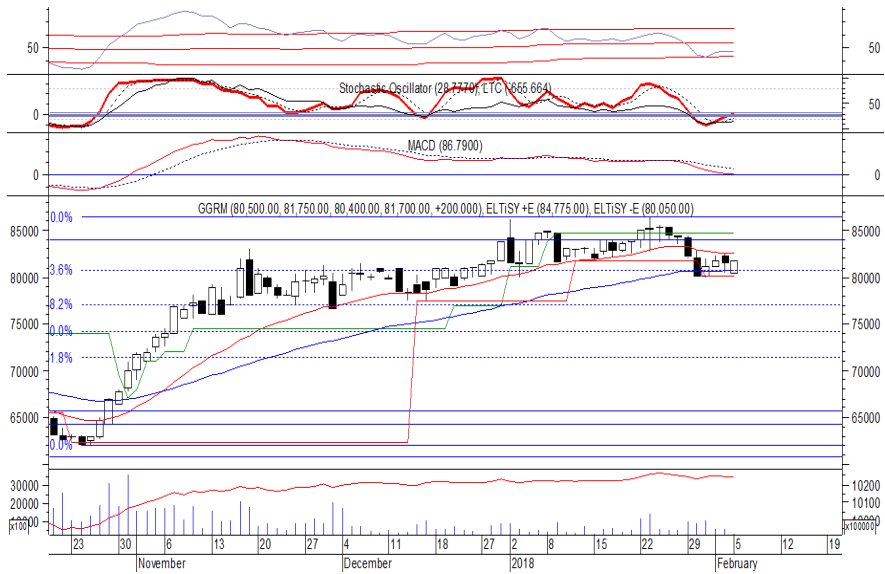
Harga tampak belum mampu untuk melewati support level yang berada di IDR 4,780, di mana berpeluang untuk melanjutkan penguatannya menuju resistance level IDR 5,100 hingga IDR 5,175.

Stochastic yang mengalami bullish crossover di wilayah oversold berpeluang membawa harga menguat.

Rekomendasi : Trading Buy
Entry Level : 4,850-4,900
Take Profit : 5,100-5,175
Stop Loss : 4,770

PT Gudang Garam Tbk

(GGRM) β : 1.25 Price : 81,700 TP: 84,000-84,775



GGRM pada perdagangan kemarin ditutup menguat berada di level IDR 81,700.

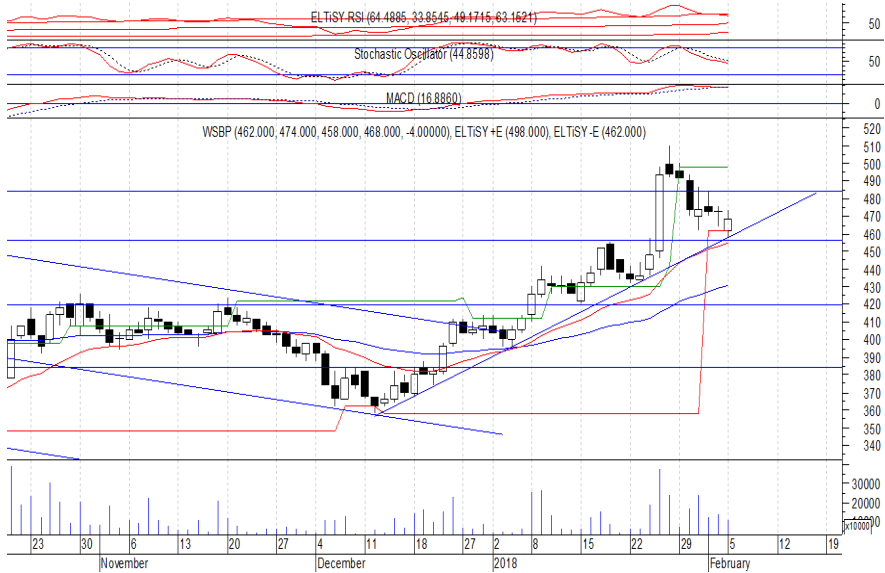
Harga tampak belum mampu untuk melewati EMA 50, di mana berpeluang untuk melanjutkan penguatannya menuju resistance level IDR 84,000 hingga IDR 84,775.

Stochastic yang bergerak meninggalkan wilayah oversold memberikan peluang untuk menguat.

Rekomendasi : Buy on Weakness
Entry Level : 81,000-81,500
Take Profit : 84,000-84,775
Stop Loss : 79,900

PT Waskita Beton Precast Tbk

(WSBP) β : N/A Price : 468 TP: 484-490



WSBP ditutup melemah pada perdagangan kemarin berada di level IDR 468.

Harga juga sempat menguji support level IDR 456, namun belum mampu untuk melewatinya.

Hal tersebut memberikan peluang bagi WSBP untuk rebound menuju resistance level IDR 484 hingga IDR 490.

Akan tetapi jika harga berbalik melemah, berpotensi menguji IDR 456.

Rekomendasi : Speculative Buy
Entry Level : 462-468
Take Profit : 484-490
Stop Loss : 454

Keterangan:

- Speculative Buy : Harga menyentuh support, harga dapat saja meneruskan pelemahan, tetapi berpotensi rebound jika harga gagal break support.
 - Buy : Harga bergerak rebound meninggalkan support level.
 - Trading Buy : Harga masih berpotensi naik, tetapi sudah mendekati resistance level.
 - Sell : Harga telah mencapai resistance level.
- Rekomendasi berdasarkan candlestick berlaku sampai 5 atau 8 hari ke depan (maksimal 10 hari), selebihnya dapat diartikan bahwa formasi candlestick gagal.

Research Division

| | | | | |
|--------------------|--|----------------------------------|------------------|-------|
| Danny Eugene | Strategist, Construction, Cement, Automotive | danny.eugene@megasekuritas.id | +62 21 7917 5599 | 62431 |
| Helen Vincentia | Consumer Goods, Retail | helen.vincentia@megasekuritas.id | +62 21 7917 5599 | 62035 |
| Fikri Syaryadi | Banking, Telco, Transportation | fikri@megasekuritas.id | +62 21 7917 5599 | 62035 |
| Adrian M. Priyatna | Property, Hospital | adrian@megasekuritas.id | +62 21 7917 5599 | 62425 |
| Novilya Wiyatno | Mining, Media, Plantation | novilya@megasekuritas.id | +62 21 7917 5599 | 62425 |
| Dhian Karyantono | Economist | dhian@megasekuritas.id | +62 21 7917 5599 | 62143 |
| Fadlillah Qudsi | Technical Analyst | fadlillah.qudsi@megasekuritas.id | +62 21 7917 5599 | 62035 |

Retail Equity Sales Division

| | | | | |
|---------------------|----------------------------------|-----------------------------------|------------------|-------|
| Hendry Kuswari | Head of Sales, Trading & Dealing | hendry@megasekuritas.id | +62 21 7917 5599 | 62038 |
| Dewi Suryani | Retail Equity Sales | dewi.suryani@megasekuritas.id | +62 21 7917 5599 | 62441 |
| Brema Setyawan | Retail Equity Sales | brema.setyawan@megasekuritas.id | +62 21 7917 5599 | 62126 |
| Ety Sulistyowati | Retail Equity Sales | ety.sulistyowati@megasekuritas.id | +62 21 7917 5599 | 62408 |
| Fadel M. Iqbal | Retail Equity Sales | fadel@megasekuritas.id | +62 21 7917 5599 | 62164 |
| Andri Sumarno | Retail Equity Sales | andri@megasekuritas.id | +62 21 7917 5599 | 62045 |
| Harini Citra | Retail Equity Sales | harini@megasekuritas.id | +62 21 7917 5599 | 62161 |
| Syaifathir Muhammad | Retail Equity Sales | fathir@megasekuritas.id | +62 21 7917 5599 | 62179 |

Corporate Equity Sales Division

| | | | | |
|-----------------------|------------------------|----------------------------------|------------------|-------|
| Rachmadian Iskandar Z | Corporate Equity Sales | rachmadian@megasekuritas.id | +62 21 7917 5599 | 62402 |
| Ratna Wijayanti | Corporate Equity Sales | ratna.wijayanti@megasekuritas.id | +62 21 7917 5599 | 62055 |
| Reza Mahendra | Corporate Equity Sales | reza.mahendra@megasekuritas.id | +62 21 7917 5599 | 62409 |

Fixed Income Sales & Trading

Tel. +62 7917 5559-62 Fax. +62 21 7917 5965

Investment Banking

Tel. +62 21 7917 5599 Fax. +62 21 7919 3900

Kantor Pusat

 Menara Bank Mega Lt. 2
 Jl. Kapt P. Tendean, Kav 12-14 A
 Jakarta Selatan 12790

Pondok Indah

 Plaza 5 Pondok Indah Blok D No. 15 Lt. 2
 Jl. Margaguna Raya Pondok Indah
 Jakarta Selatan

Kelapa Gading

 Ruko Gading Bukit Indah Lt.2
 Jl. Bukit Gading Raya Blok A No. 26, Kelapa Gading
 Jakarta Utara - 14240

DISCLAIMER

This Document is for information only and for the use of the recipient. It is not to be reproduced or copied or made available to others. Under no circumstances is it to be considered as an offer to sell or solicitation to buy any security. Any recommendation contained in this report may not be suitable for all investors and strictly a personal view and should not be used as a sole judgment for investment. Moreover, although the information contained herein has been obtained from sources believed to be reliable, its accuracy, completeness and reliability cannot be guaranteed. All rights reserved by PT Mega Capital Sekuritas.