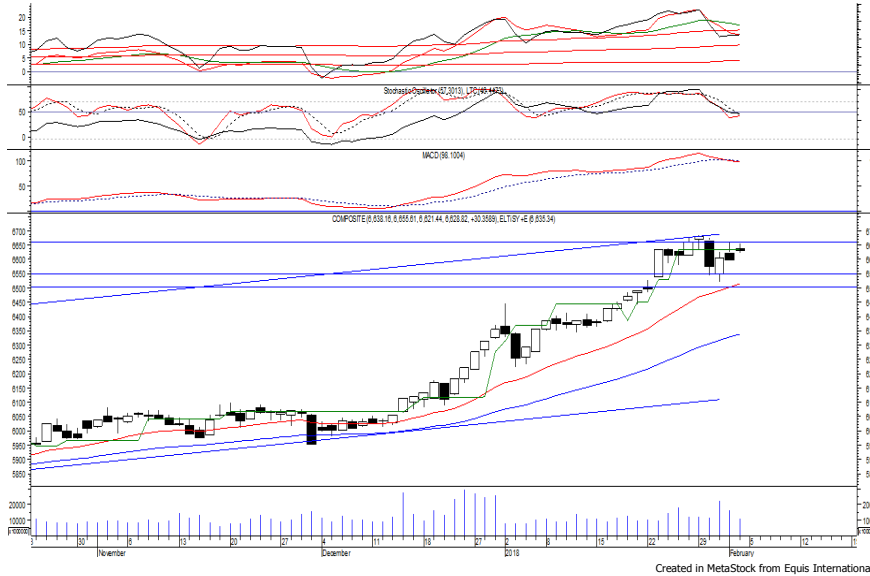


Indeks Harga Saham Gabungan (IHSG)

(IHSG)

Range : 6,580 — 6,680



IHSG mampu ditutup menguat pada perdagangan akhir pekan kemarin berada di level 6,628.

Indeks tampak melanjutkan konsolidasinya yang terjadi selama lebih dari sepekan terakhir, dan berpotensi untuk berlanjut menuju support level 6,580 hingga 6,550.

MACD yang mengindikasikan death cross berpotensi membawa indeks mengalami koreksi.

Hari ini diperkirakan indeks kembali fluktuatif cenderung melemah.

| Level | Support | Resistance |
|-------|---------|------------|
| I | 6,580 | 6,680 |
| II | 6,550 | 6,700 |
| III | 6,525 | 6,725 |

| Top Active | | |
|------------|--------|--------|
| Code | Close | Freq |
| ENRG | 196 | 12,531 |
| BUMI | 328 | 9,906 |
| PNBS | 85 | 9,558 |
| PGAS | 2,460 | 9,468 |
| BBRI | 3,740 | 9,032 |
| INDY | 4,450 | 7,953 |
| ADRO | 2,470 | 7,726 |
| PTBA | 3,300 | 6,252 |
| BMTR | 730 | 6,218 |
| BBCA | 23,975 | 6,128 |

| Top Foreign Buy | | |
|-----------------|-------|------------|
| Code | Close | Volume |
| ENRG | 196 | 27,886,200 |
| ADRO | 2,470 | 19,973,972 |
| LEAD | 113 | 14,330,500 |
| BRMS | 86 | 9,433,800 |
| INDY | 4,450 | 7,220,800 |
| MYRX | 111 | 5,399,900 |
| PNLF | 296 | 5,190,900 |
| TRAM | 328 | 4,657,800 |
| BBTN | 3,670 | 4,397,800 |
| ELSA | 444 | 4,058,500 |

| Top Foreign Sell | | |
|------------------|-------|-------------|
| Code | Close | Volume |
| BUMI | 328 | -69,246,200 |
| PGAS | 2,460 | -33,419,851 |
| BBRI | 3,740 | -28,152,691 |
| HMSP | 4,800 | -20,071,700 |
| BSDE | 1,885 | -18,497,685 |
| MNCN | 1,595 | -10,279,000 |
| TLKM | 4,000 | -8,167,402 |
| ASII | 8,700 | -7,953,971 |
| BKSL | 174 | -7,577,800 |
| AKRA | 5,825 | -6,981,100 |

| Top Leading | | |
|-------------|---------|---------|
| Code | IDX Pts | Chg (%) |
| BBCA | 13.1 | 2.6 |
| ASII | 4.5 | 1.5 |
| BBRI | 4.4 | 1.1 |
| UNVR | 4.3 | 1.2 |
| EMTK | 2.3 | 4.5 |

| Top Lagging | | |
|-------------|---------|---------|
| Code | IDX Pts | Chg (%) |
| BMRI | -3.1 | -0.9 |
| INTP | -2.3 | -3.2 |
| BRPT | -1.3 | -3.7 |
| ITMG | -1.2 | -3.9 |
| PGAS | -1.1 | -2.0 |

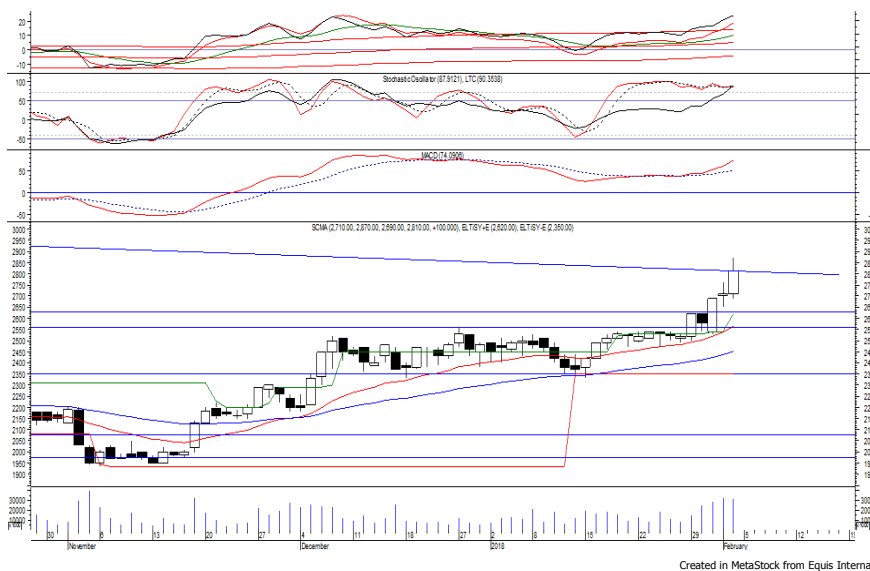
PT Surya Citra Media Tbk

(SCMA) β :

0.74 Price :

2,810 TP:

2,920-2,980



SCMA pada perdagangan sebelumnya mampu ditutup menguat menguji resistance level IDR 2,810.

Harga berpeluang untuk dapat melanjutkan penguatannya jika mampu melewati level tersebut, di mana berpeluang menuju resistance level IDR 2,920 hingga IDR 2,980.

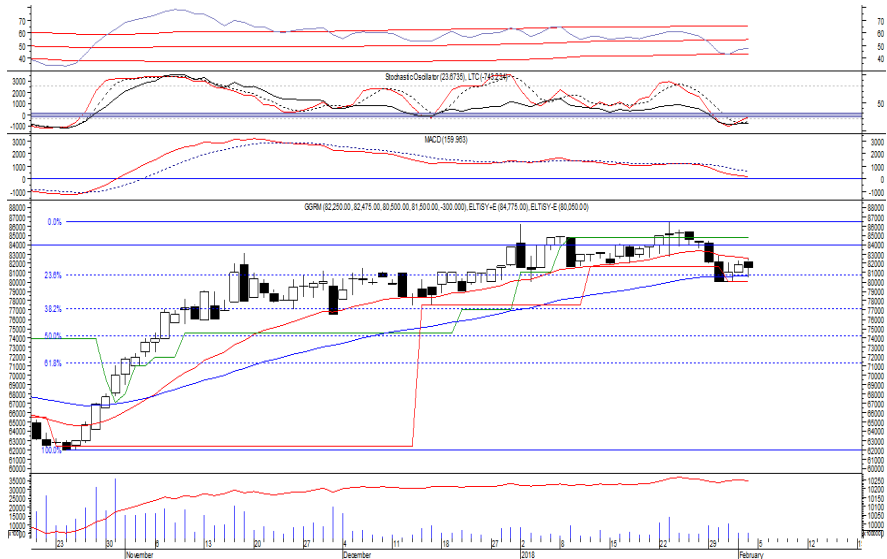
Akan tetapi jika harga berbalik melemah maka berpotensi menguji support level IDR 2,630.

- Rekomendasi** : Buy on Breakout
- Entry Level** : 2,820-2,830
- Take Profit** : 2,920-2,980
- Stop Loss** : 2,780

PT Gudang Garam Tbk

(GGRM) β :

1.25 Price : 81,500 TP: 84,000-84,775



GGRM sempat dibuka menguat di awal perdagangan sebelumnya, namun akhirnya di tutup melemah berada di level IDR 81,500.

Harga tampak sedang mencoba untuk bertahan di atas EMA 50, di mana berpeluang mengalami rebound menuju resistance level IDR 84,000 hingga IDR 84,775.

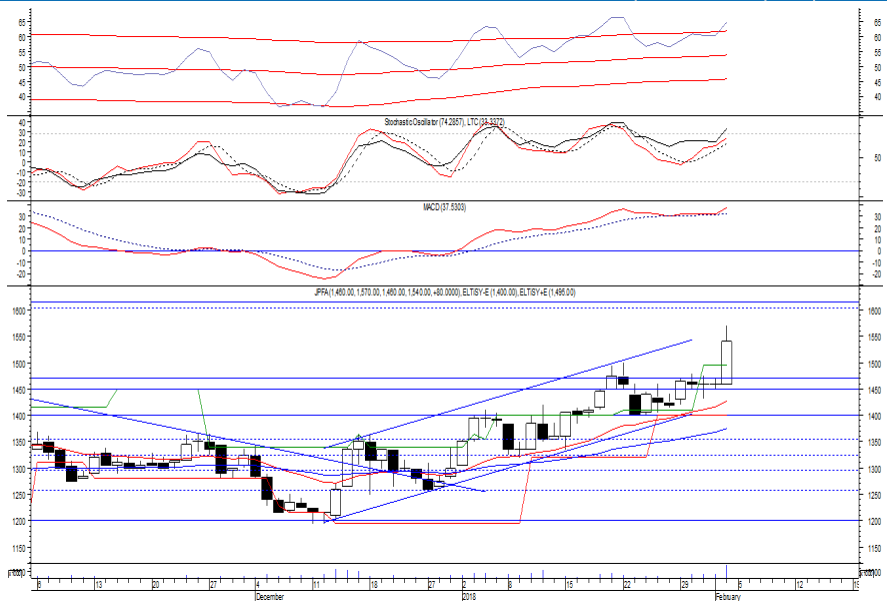
Stochastic yang mengalami bullish crossover memberikan peluang untuk menguat.

Rekomendasi : Buy on Weakness
Entry Level : 80,400-81,000
Take Profit : 84,000-84,775
Stop Loss : 79,900

PT Japfa Comfeed Indonesia Tbk

(JPFA) β :

0.83 Price : 1,540 TP: 1,615-1,640



JPFA mampu ditutup menguat pada perdagangan kemarin berada di level IDR 1,540.

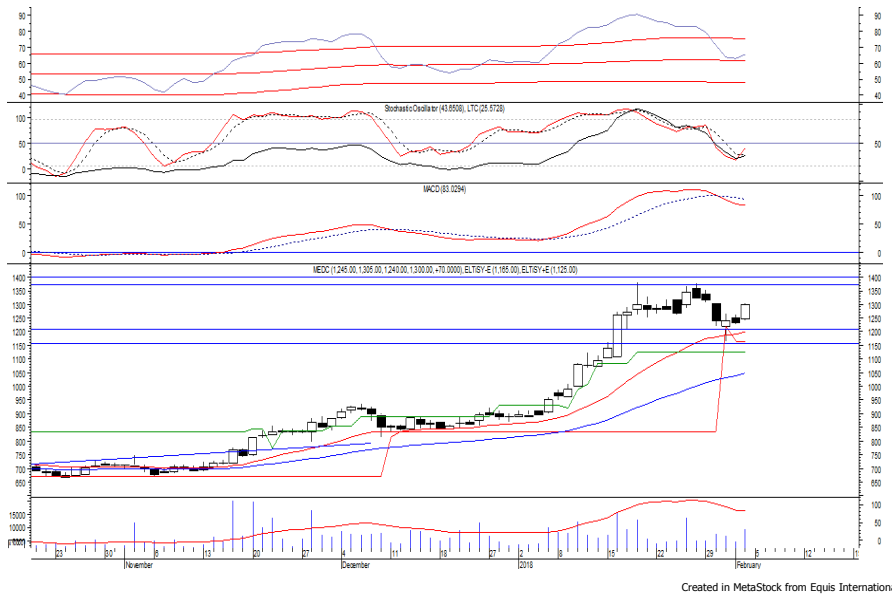
Harga tampak sedang bergerak melewati resistance level IDR 1,495, di mana berpeluang untuk berlanjut menuju level berikutnya di IDR 1,615 hingga IDR 1,640.

Stochastic cenderung menguat, namun jika harga berbalik melemah maka berpotensi menguji support level IDR 1,495.

Rekomendasi : Trading Buy
Entry Level : 1,520-1,540
Take Profit : 1,615-1,640
Stop Loss : 1,490

PT Medco Energi Internasional Tbk

(MEDC) β : 1.03 Price : 1,300 TP: 1,370-1,400



MEDC ditutup menguat pada perdagangan akhir pekan kemarin berada di level IDR 1,300.

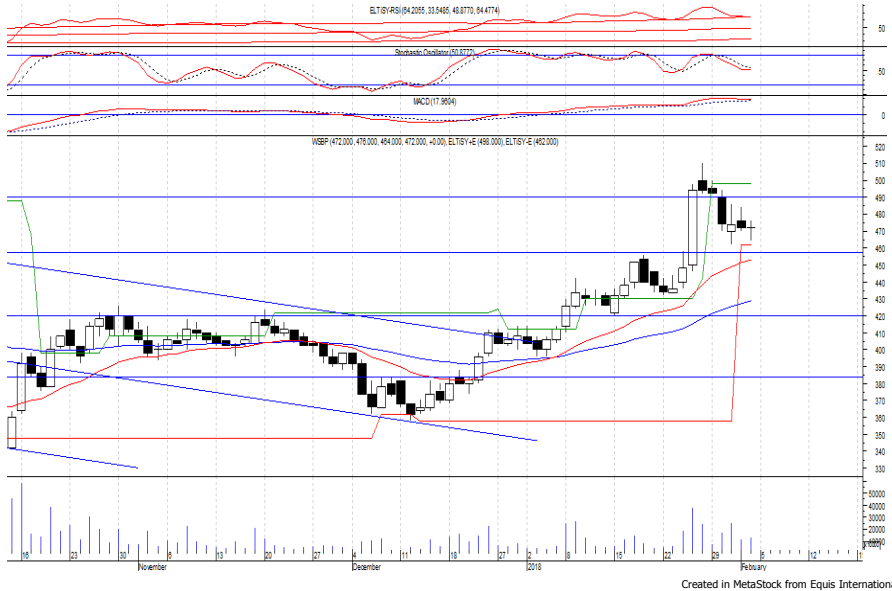
Harga berpotensi untuk melanjutkan rebound yang terjadi setelah belum mampu melewati EMA 20, di mana berpotensi menuju resistance level IDR 1,370 hingga IDR 1,400.

Stochastic yang mengalami bullish crossover memberikan peluang untuk menguat. Kecuali harga melemah hingga di bawah IDR 1,265.

- Rekomendasi** : Trading Buy
- Entry Level** : 1,285-1,300
- Take Profit** : 1,370-1,400
- Stop Loss** : 1,260

PT Waskita Beton Precast Tbk

(WSBP) β : N/A Price : 472 TP: 484-490



WSBP pada perdagangan sebelumnya ditutup bertahan di level IDR 472.

Harga tampak sedang mengalami konsolidasi, di mana berpotensi untuk mengakhiri throwback yang terjadi, dan bergerak menuju resistance level IDR 484 hingga IDR 490.

Stochastic berada di wilayah netral, namun MACD yang mengindikasikan terjadinya death cross berpotensi menghambat laju penguatan harga dan menguji support level IDR 462.

- Rekomendasi** : Buy on Weakness
- Entry Level** : 462-468
- Take Profit** : 484-490
- Stop Loss** : 454

Keterangan:

- Speculative Buy** : Harga menyentuh support, harga dapat saja meneruskan pelemahan, tetapi berpotensi rebound jika harga gagal break support.
 - Buy** : Harga bergerak rebound meninggalkan support level.
 - Trading Buy** : Harga masih berpotensi naik, tetapi sudah mendekati resistance level.
 - Sell** : Harga telah mencapai resistance level.
- Rekomendasi berdasarkan candlestick berlaku sampai 5 atau 8 hari ke depan (maksimal 10 hari), selebihnya dapat diartikan bahwa formasi candlestick gagal.

Research Division

| | | | | |
|--------------------|--|----------------------------------|------------------|-------|
| Danny Eugene | Strategist, Construction, Cement, Automotive | danny.eugene@megasekuritas.id | +62 21 7917 5599 | 62431 |
| Helen Vincentia | Consumer Goods, Retail | helen.vincentia@megasekuritas.id | +62 21 7917 5599 | 62035 |
| Fikri Syaryadi | Banking, Telco, Transportation | fikri@megasekuritas.id | +62 21 7917 5599 | 62035 |
| Adrian M. Priyatna | Property, Hospital | adrian@megasekuritas.id | +62 21 7917 5599 | 62425 |
| Novilya Wiyatno | Mining, Media, Plantation | novilya@megasekuritas.id | +62 21 7917 5599 | 62425 |
| Dhian Karyantono | Economist | dhian@megasekuritas.id | +62 21 7917 5599 | 62143 |
| Fadlillah Qudsi | Technical Analyst | fadlillah.qudsi@megasekuritas.id | +62 21 7917 5599 | 62035 |

Retail Equity Sales Division

| | | | | |
|---------------------|----------------------------------|-----------------------------------|------------------|-------|
| Hendry Kuswari | Head of Sales, Trading & Dealing | hendry@megasekuritas.id | +62 21 7917 5599 | 62038 |
| Dewi Suryani | Retail Equity Sales | dewi.suryani@megasekuritas.id | +62 21 7917 5599 | 62441 |
| Brema Setyawan | Retail Equity Sales | brema.setyawan@megasekuritas.id | +62 21 7917 5599 | 62126 |
| Ety Sulistyowati | Retail Equity Sales | ety.sulistyowati@megasekuritas.id | +62 21 7917 5599 | 62408 |
| Fadel M. Iqbal | Retail Equity Sales | fadel@megasekuritas.id | +62 21 7917 5599 | 62164 |
| Andri Sumarno | Retail Equity Sales | andri@megasekuritas.id | +62 21 7917 5599 | 62045 |
| Harini Citra | Retail Equity Sales | harini@megasekuritas.id | +62 21 7917 5599 | 62161 |
| Syaifathir Muhammad | Retail Equity Sales | fathir@megasekuritas.id | +62 21 7917 5599 | 62179 |

Corporate Equity Sales Division

| | | | | |
|-----------------------|------------------------|----------------------------------|------------------|-------|
| Rachmadian Iskandar Z | Corporate Equity Sales | rachmadian@megasekuritas.id | +62 21 7917 5599 | 62402 |
| Ratna Wijayanti | Corporate Equity Sales | ratna.wijayanti@megasekuritas.id | +62 21 7917 5599 | 62055 |
| Reza Mahendra | Corporate Equity Sales | reza.mahendra@megasekuritas.id | +62 21 7917 5599 | 62409 |

Fixed Income Sales & Trading

Tel. +62 7917 5559-62 Fax. +62 21 7917 5965

Investment Banking

Tel. +62 21 7917 5599 Fax. +62 21 7919 3900

Kantor Pusat

Menara Bank Mega Lt. 2
 Jl. Kapt P. Tendean, Kav 12-14 A
 Jakarta Selatan 12790

Pondok Indah

Plaza 5 Pondok Indah Blok D No. 15 Lt. 2
 Jl. Margaguna Raya Pondok Indah
 Jakarta Selatan

Kelapa Gading

Ruko Gading Bukit Indah Lt.2
 Jl. Bukit Gading Raya Blok A No. 26, Kelapa Gading
 Jakarta Utara - 14240

DISCLAIMER

This Document is for information only and for the use of the recipient. It is not to be reproduced or copied or made available to others. Under no circumstances is it to be considered as an offer to sell or solicitation to buy any security. Any recommendation contained in this report may not be suitable for all investors and strictly a personal view and should not be used as a sole judgment for investment. Moreover, although the information contained herein has been obtained from sources believed to be reliable, its accuracy, completeness and reliability cannot be guaranteed. All rights reserved by PT Mega Capital Sekuritas.