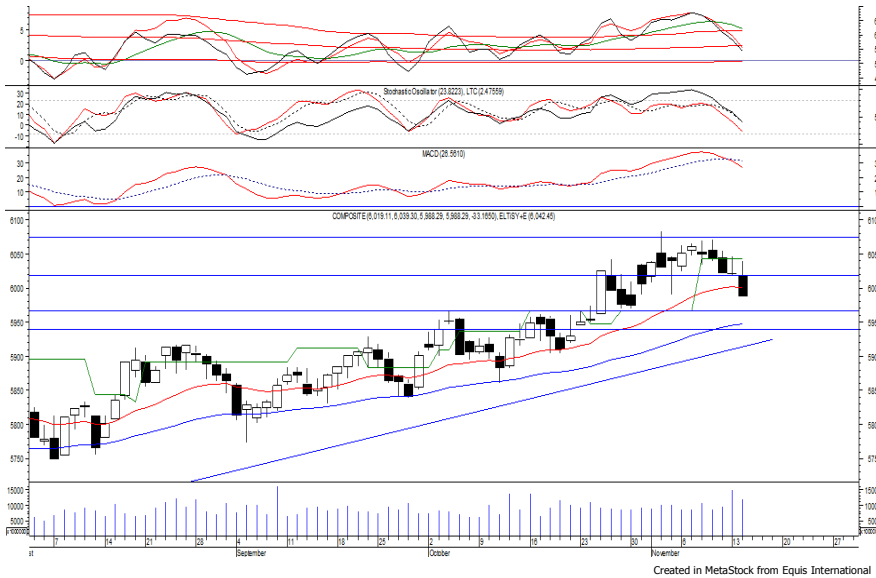


Indeks Harga Saham Gabungan (IHSG)

(IHSG)

Range : 5,965— 6,020



IHSG kembali ditutup melemah pada perdagangan kemarin berada di level 5,988.

Indeks berpotensi untuk melanjutkan pelemahannya setelah belum mampu bertahan di atas support level 6,020, di mana berpotensi menuju level berikutnya di 5,965.

MACD yang mengalami death cross berpotensi membawa indeks melemah. Namun jika indeks berbalik menguat maka berpeluang menguji resistance level 6,020.

Hari ini diperkirakan indeks kembali fluktuatif cenderung melemah terbatas.

| Level | Support | Resistance |
|-------|---------|------------|
| I | 5,965 | 6,020 |
| II | 5,940 | 6,040 |
| III | 5,910 | 6,075 |

| Top Active | | | Top Foreign Buy | | | Top Foreign Sell | | | Top Leading | | |
|------------|--------|--------|-----------------|-------|------------|------------------|-------|-------------|--------------------|---------|---------|
| Code | Close | Freq | Code | Close | Volume | Code | Close | Volume | Code | IDX Pts | Chg (%) |
| LMAS | 65 | 52,473 | BBRI | 3,260 | 14,254,850 | LPKR | 635 | -30,788,900 | EMTK | 4.2 | 9.8 |
| BMTR | 585 | 9,858 | IIKP | 202 | 14,157,900 | PGAS | 1,770 | -12,888,100 | UNTR | 2.2 | 2.0 |
| PBRX | 492 | 8,678 | ULTJ | 1,290 | 10,000,000 | TLKM | 4,100 | -10,265,649 | BUMI | 1.8 | 12.0 |
| GSMF | 125 | 7,921 | DILD | 388 | 9,643,100 | ADRO | 1,820 | -10,254,470 | PGAS | 1.2 | 3.1 |
| KREN | 520 | 7,118 | BKSL | 137 | 8,242,500 | SMRA | 985 | -9,748,500 | PWON | 0.9 | 3.3 |
| INDY | 2,790 | 6,648 | ASII | 8,350 | 6,355,500 | SOCI | 288 | -7,064,100 | Top Lagging | | |
| TLKM | 4,100 | 6,072 | SRIL | 386 | 5,383,500 | PWON | 615 | -5,605,200 | Code | IDX Pts | Chg (%) |
| PTRO | 1,730 | 5,533 | BUMI | 250 | 4,683,100 | JSMR | 6,425 | -5,228,361 | BBRI | -10.2 | -2.8 |
| BBCA | 20,475 | 5,523 | AMRT | 680 | 4,131,400 | TRAM | 146 | -5,202,000 | HMSP | -5.4 | -1.2 |
| BCIP | 156 | 5,511 | EXCL | 3,500 | 4,070,300 | RALS | 915 | -4,933,100 | GGRM | -5.3 | -3.8 |
| | | | | | | | | | BMRI | -4.3 | -1.4 |
| | | | | | | | | | MNCN | -2.7 | -12.4 |

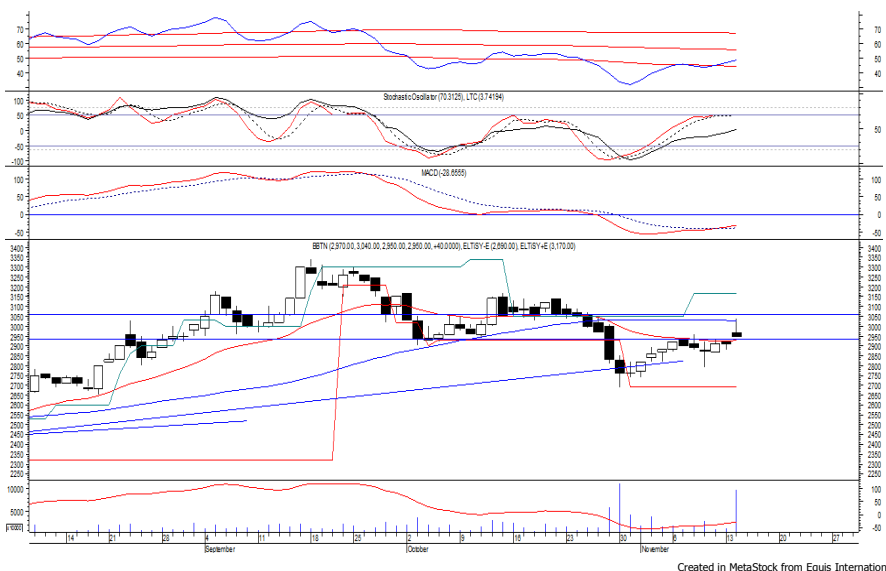
PT Bank Tabungan Negara Persero Tbk

(BBTN) β :

0.85 Price :

2,950 TP:

3,060-3,110



BBTN ditutup menguat pada perdagangan kemarin berada di level IDR 2,950.

Harga tampak sedang bergerak melewati resistance level IDR 2,930, di mana berpeluang untuk melanjutkan penguatannya menuju resistance level IDR 3,060 hingga IDR 3,110.

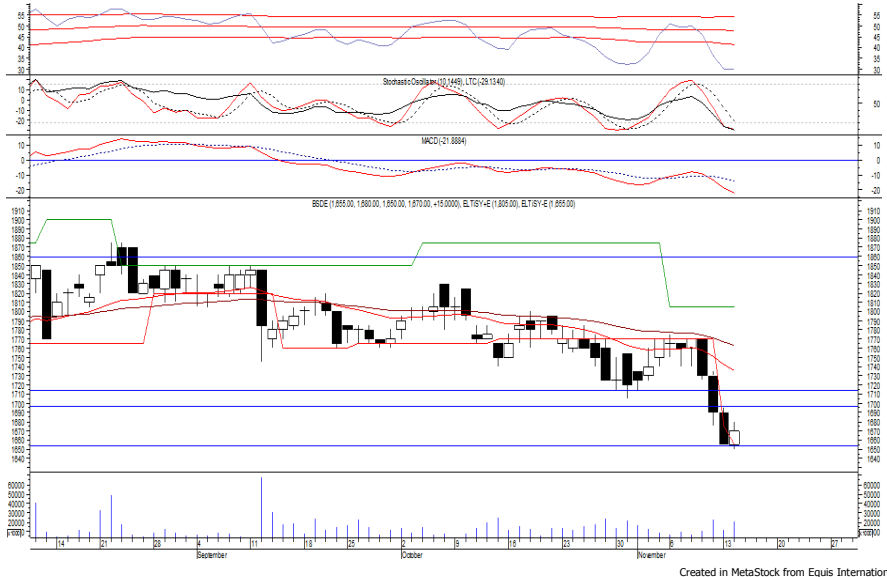
MACD yang mengalami golden cross memberikan peluang penguatan, kecuali harga melemah di bawah IDR 1,645.

| | |
|--------------------|--------------------------|
| Rekomendasi | : Speculative Buy |
| Entry Level | : 2,930-2,950 |
| Take Profit | : 3,060-3,110 |
| Stop Loss | : 2,890 |

PT Bumi Serpong Damai Tbk

(BSDE) β :

1.25 Price : 1,670 TP: 1,695-1,715



BSDE mampu ditutup menguat pada perdagangan kemarin berada di level IDR 1,670.

Harga tampak mencoba bertahan di atas support level IDR 1,655, di mana berpeluang untuk berlanjut menuju resistance level IDR 1,695 hingga IDR 1,715.

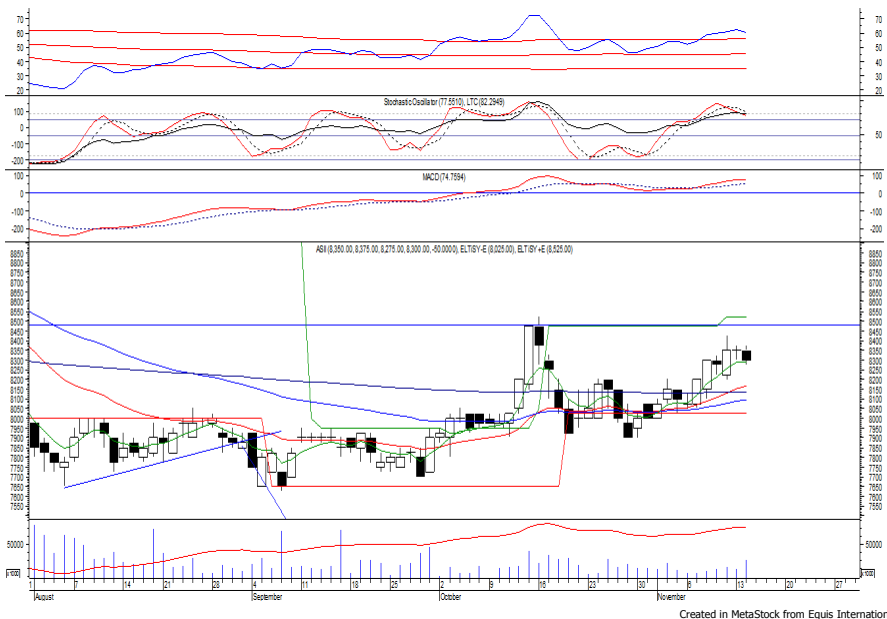
Stochastic mengalami kejenuhan terhadap aksi jual dan berpeluang menguat dalam jangka pendek.

- Rekomendasi** : Speculative Buy
- Entry Level** : 1,655-1,670
- Take Profit** : 1,695-1,715
- Stop Loss** : 1,640

PT Astra International Tbk

(ASII) β :

1.27 Price : 8,300 BF: 8,150-8,025



ASII ditutup melemah pada perdagangan kemarin berada di level IDR 8,300.

Harga berpotensi untuk kembali melanjutkan pelemahannya menuju support level IDR 8,150 hingga IDR 8,025.

Stochastic yang mengalami bearish crossover berpotensi membawa harga melemah.

Kecuali harga mampu berbalik menguat hingga di atas IDR 8,550.

- Rekomendasi** : Sell on Strength
- Exit Level** : 8,475-8,375
- Bottom Fishing** : 8,150-8,025
- Buy Back** : 8,600

PT United Tractors Tbk

(UNTR) β : 1.34 Price : 33,525 TP: 34,325-35,000



UNTR pada perdagangan kemarin ditutup menguat berada di level IDR 33,525.

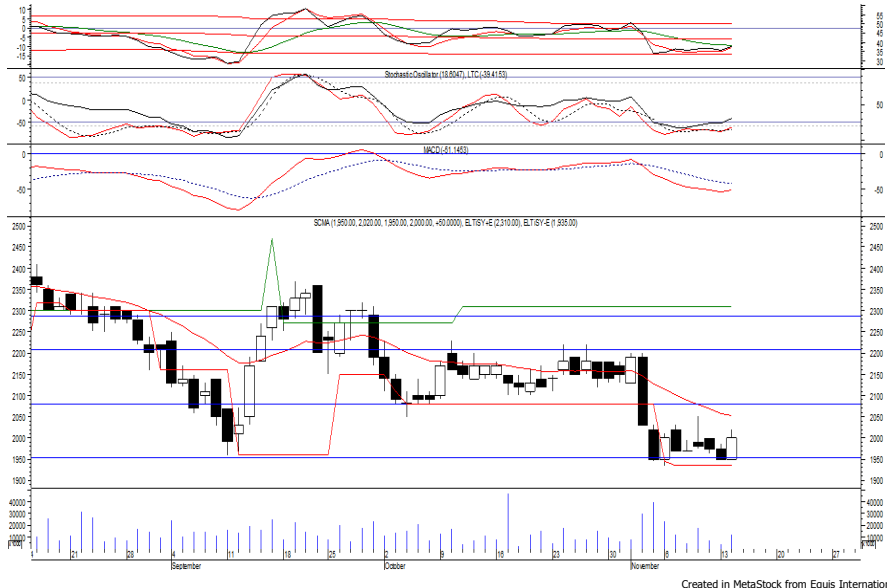
Harga berpotensi untuk melanjutkan rebound yang terjadi setelah belum mampu melewati support level IDR 32,700, di mana berpotensi menuju resistance level IDR 34,325 hingga IDR 35,000.

Stochastic yang mengindikasikan bullish crossover memberikan peluang untuk menguat.

Rekomendasi : Speculative Buy
Entry Level : 33,300-33,550
Take Profit : 34,325-35,000
Stop Loss : 32,675

PT Surya Citra Media Tbk

(SCMA) β : 0.81 Price : 2,000 TP: 2,050-2,080



SCMA mampu ditutup menguat pada perdagangan kemarin berada di level IDR 2,000.

Harga tampak mencoba untuk bertahan di atas IDR 1,935, di mana berpotensi untuk rebound menuju resistance level IDR 2,050 hingga IDR 2,080.

Stochastic yang mengindikasikan terjadinya bullish crossover memberikan peluang untuk menguat.

Kecuali harga berbalik melemah di bawah IDR 1,970.

Rekomendasi : Speculative Buy
Entry Level : 1,985-2,000
Take Profit : 2,050-2,080
Stop Loss : 1,965

Keterangan:

Speculative Buy : Harga menyentuh support, harga dapat saja meneruskan pelemahan, tetapi berpotensi rebound jika harga gagal break support.

Buy : Harga bergerak rebound meninggalkan support level.

Trading Buy : Harga masih berpotensi naik, tetapi sudah mendekati resistance level.

Sell : Harga telah mencapai resistance level.

Rekomendasi berdasarkan candlestick berlaku sampai 5 atau 8 hari ke depan (maksimal 10 hari), selebihnya dapat diartikan bahwa formasi candlestick gagal.

Research Division

| | | | | |
|--------------------|--|----------------------------------|------------------|-------|
| Danny Eugene | Strategist, Construction, Cement, Automotive | danny.eugene@megasekuritas.id | +62 21 7917 5599 | 62431 |
| Helen Vincentia | Consumer Goods, Retail | helen.vincentia@megasekuritas.id | +62 21 7917 5599 | 62035 |
| Fikri Syaryadi | Banking | fikri@megasekuritas.id | +62 21 7917 5599 | 62035 |
| Adrian M. Priyatna | Property, Hospital | adrian@megasekuritas.id | +62 21 7917 5599 | 62425 |
| Novilya Wiyatno | Mining, Media, Plantation | novilya@megasekuritas.id | +62 21 7917 5599 | 62425 |
| Dhian Karyantono | Economist | dhian@megasekuritas.id | +62 21 7917 5599 | 62143 |
| Fadlillah Qudsi | Technical Analyst | fadlillah.qudsi@megasekuritas.id | +62 21 7917 5599 | 62035 |

Retail Equity Sales Division

| | | | | |
|--------------------|----------------------------------|-----------------------------------|------------------|-------|
| Hendry Kuswari | Head of Sales, Trading & Dealing | hendry@megasekuritas.id | +62 21 7917 5599 | 62038 |
| Dewi Suryani | Retail Equity Sales | dewi.suryani@megasekuritas.id | +62 21 7917 5599 | 62441 |
| Brema Setyawan | Retail Equity Sales | brema.setyawan@megasekuritas.id | +62 21 7917 5599 | 62126 |
| Ety Sulistyowati | Retail Equity Sales | ety.sulistyowati@megasekuritas.id | +62 21 7917 5599 | 62408 |
| Fadel M. Iqbal | Retail Equity Sales | fadel@megasekuritas.id | +62 21 7917 5599 | 62164 |
| Andri Sumarno | Retail Equity Sales | andri@megasekuritas.id | +62 21 7917 5599 | 62045 |
| Harini Citra | Retail Equity Sales | harini@megasekuritas.id | +62 21 7917 5599 | 62161 |
| Syaifathir Muhamad | Retail Equity Sales | fathir@megasekuritas.id | +62 21 7917 5599 | 62179 |

Corporate Equity Sales Division

| | | | | |
|-----------------------|------------------------|----------------------------------|------------------|-------|
| Rachmadian Iskandar Z | Corporate Equity Sales | rachmadian@megasekuritas.id | +62 21 7917 5599 | 62402 |
| Ratna Wijayanti | Corporate Equity Sales | ratna.wijayanti@megasekuritas.id | +62 21 7917 5599 | 62055 |
| Reza Mahendra | Corporate Equity Sales | reza.mahendra@megasekuritas.id | +62 21 7917 5599 | 62409 |

Fixed Income Sales & Trading

Tel. +62 7917 5559-62 Fax. +62 21 7917 5965

Investment Banking

Tel. +62 21 7917 5599 Fax. +62 21 7919 3900

Kantor Pusat

 Menara Bank Mega Lt. 2
 Jl. Kapt P. Tendean, Kav 12-14 A
 Jakarta Selatan 12790

Pondok Indah

 Plaza 5 Pondok Indah Blok D No. 15 Lt. 2
 Jl. Margaguna Raya Pondok Indah
 Jakarta Selatan

Kelapa Gading

 Ruko Gading Bukit Indah Lt.2
 Jl. Bukit Gading Raya Blok A No. 26, Kelapa Gading
 Jakarta Utara - 14240

DISCLAIMER

This Document is for information only and for the use of the recipient. It is not to be reproduced or copied or made available to others. Under no circumstances is it to be considered as an offer to sell or solicitation to buy any security. Any recommendation contained in this report may not be suitable for all investors and strictly a personal view and should not be used as a sole judgment for investment. Moreover, although the information contained herein has been obtained from sources believed to be reliable, its accuracy, completeness and reliability cannot be guaranteed. All rights reserved by PT Mega Capital Sekuritas.