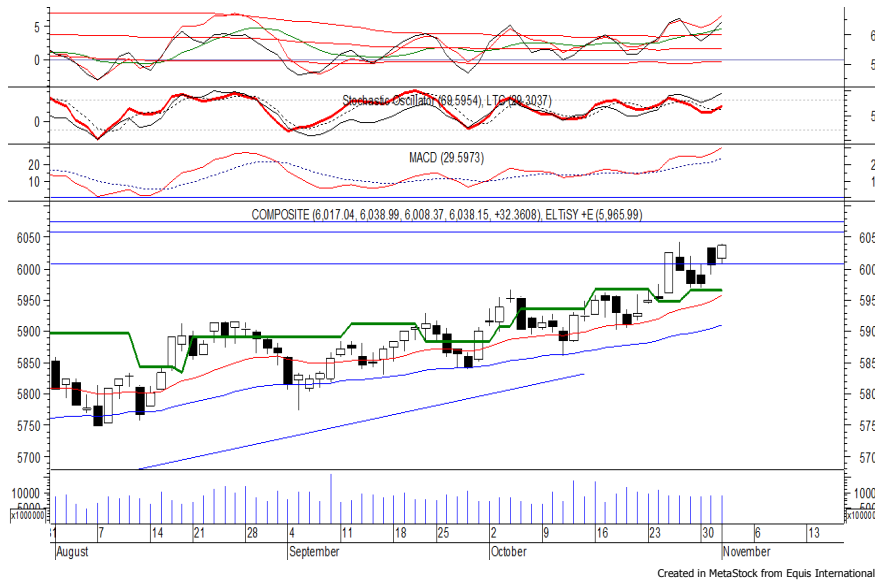


**Indeks Harga Saham Gabungan (IHSG)**

(IHSG)

**Range : 6,005—6,075**



IHSG ditutup menguat pada perdagangan kemarin berada di level 6,038.

Kemampuan indeks bertahan di atas 6,000 memberikan peluang untuk dapat melanjutkan penguatannya menuju resistance level 6,060 hingga 6,075.

Stochastic berada di wilayah netral dan mengalami bullish crossover. Namun jika indeks berbalik melemah maka berpotensi mengalami konsolidasi menguji 6,005.

Hari ini diperkirakan indek bergerak fluktuatif cenderung menguat terbatas.

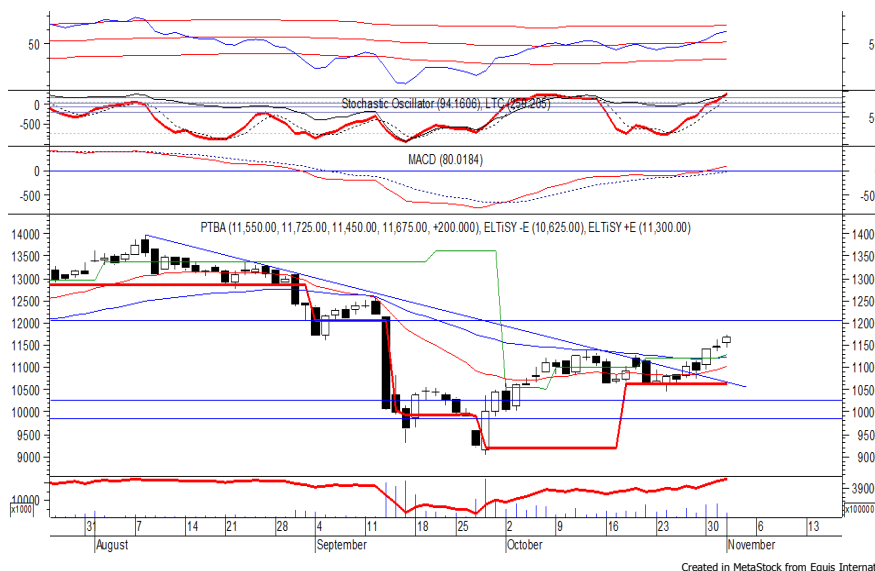
| Level | Support | Resistance |
|-------|---------|------------|
| I     | 6,005   | 6,060      |
| II    | 5,990   | 6,075      |
| III   | 5,975   | 6,090      |

| Top Active |        |        | Top Foreign Buy |        |            | Top Foreign Sell |       |              | Top Leading |         |         |
|------------|--------|--------|-----------------|--------|------------|------------------|-------|--------------|-------------|---------|---------|
| Code       | Close  | Freq   | Code            | Close  | Volume     | Code             | Close | Volume       | Code        | IDX Pts | Chg (%) |
| TLKM       | 3,950  | 22,377 | BKSL            | 141    | 25,315,600 | TLKM             | 3,950 | -161,030,664 | BBCA        | 9.6     | 2.0     |
| PBRX       | 488    | 11,351 | BBNI            | 7,925  | 23,670,400 | PNLF             | 244   | -133,497,300 | BBNI        | 5.5     | 4.3     |
| SRIL       | 370    | 10,115 | ADRO            | 1,910  | 21,671,000 | IIKP             | 193   | -50,792,200  | UNTR        | 5.4     | 4.5     |
| BMTR       | 600    | 8,318  | WTON            | 645    | 11,121,200 | BUMI             | 272   | -45,138,900  | GGRM        | 3.1     | 2.5     |
| ANTM       | 710    | 7,212  | PWON            | 640    | 10,334,430 | LPKR             | 675   | -23,364,600  | ASII        | 2.8     | 0.9     |
| BBCA       | 21,325 | 7,048  | ACES            | 1,300  | 7,851,900  | ASII             | 8,075 | -15,749,600  | Top Lagging |         |         |
| BUMI       | 272    | 6,979  | BBCA            | 21,325 | 7,640,700  | KLBF             | 1,600 | -13,395,800  | Code        | IDX Pts | Chg (%) |
| UNTR       | 36,250 | 5,415  | BRAU            | 82     | 6,301,700  | INCO             | 3,020 | -9,335,800   | TLKM        | -7.5    | -2.0    |
| TINS       | 895    | 4,986  | LPPF            | 9,600  | 4,454,300  | ERAA             | 800   | -7,853,300   | TPIA        | -3.6    | -3.9    |
| INCO       | 3,020  | 4,863  | BRMS            | 65     | 4,350,000  | MLPL             | 172   | -7,493,500   | SMGR        | -2.2    | -3.7    |
|            |        |        |                 |        |            |                  |       |              | RIMO        | -1.1    | -4.8    |
|            |        |        |                 |        |            |                  |       |              | INTP        | -0.9    | -1.2    |

**PT Tambang Batubara Bukit Asam Persero Tbk**

(PTBA)  $\beta$  :

**1.35 Price : 11,675 TP: 12,050-12,175**



PTBA kembali ditutup menguat pada perdagangan kemarin melanjutkan penguatan yang terjadi beberapa hari terakhir.

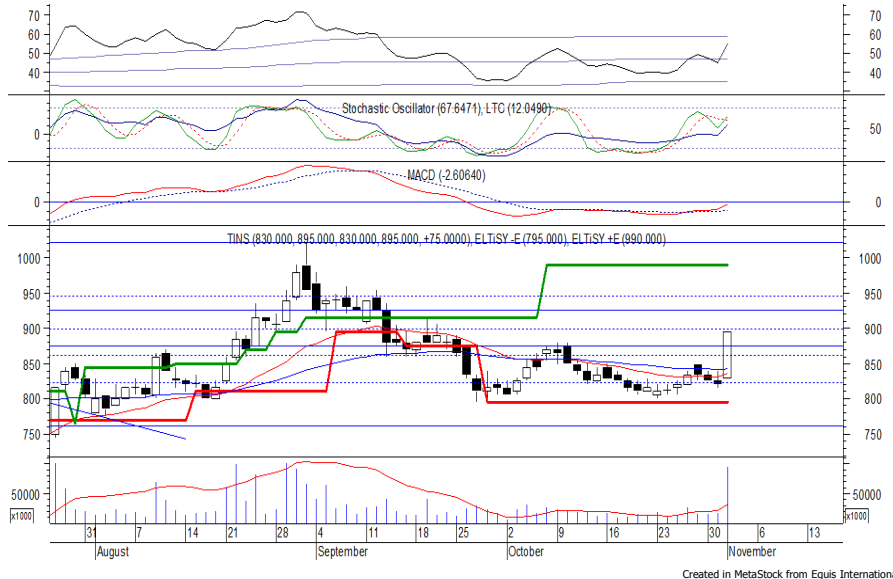
Harga berpeluang untuk kembali menguat setelah mampu bertahan di atas EMA 50 dan/atau support level 11,300, di mana berpeluang menuju level berikutnya di IDR 12,050 hingga IDR 12,175.

Kecuali harga berbalik melemah hingga di bawah IDR 11,425.

- Rekomendasi : Trading Buy**
- Entry Level : 11,575-11,675**
- Take Profit : 12,050-12,175**
- Stop Loss : 11,400**

## PT Timah Persero Tbk

(TINS)  $\beta$  : 1.04 Price : 895 TP: 925-945



TINS pada perdagangan kemarin ditutup menguat berada di level IDR 895.

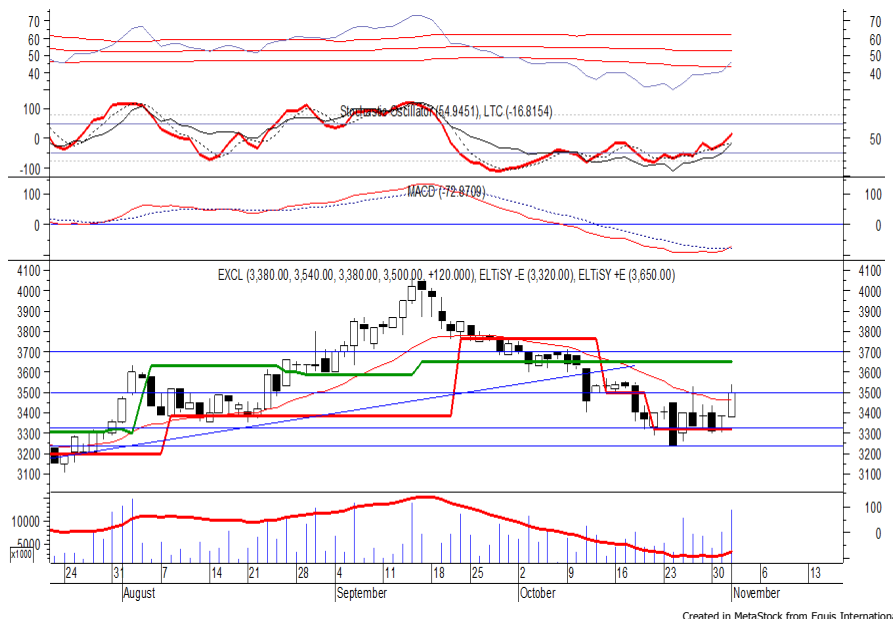
Harga tampak sedang bergerak melewati resistance level IDR 875, di mana berpeluang untuk berlanjut menuju level berikutnya di IDR 925 hingga IDR 945.

MACD yang mengalami golden cross memberikan peluang terjadinya penguatan. Kecuali harga berbalik melemah hingga di bawah IDR 865.

**Rekomendasi** : Trading Buy  
**Entry Level** : 880-895  
**Take Profit** : 925-945  
**Stop Loss** : 860

## PT XL Axiata Tbk

(EXCL)  $\beta$  : 0.99 Price : 3,500 TP: 3,650-3,700



EXCL ditutup menguat pada perdagangan kemarin menguji resistance level IDR 3,500.

Harga berpeluang untuk dapat melanjutkan penguatannya jika mampu melewati level tersebut, di mana berpeluang menuju IDR 3,650 hingga IDR 3,700.

MACD yang mengalami golden cross memberikan peluang untuk menguat. Namun jika harga berbalik melemah maka berpotensi menguji support level IDR 3,390.

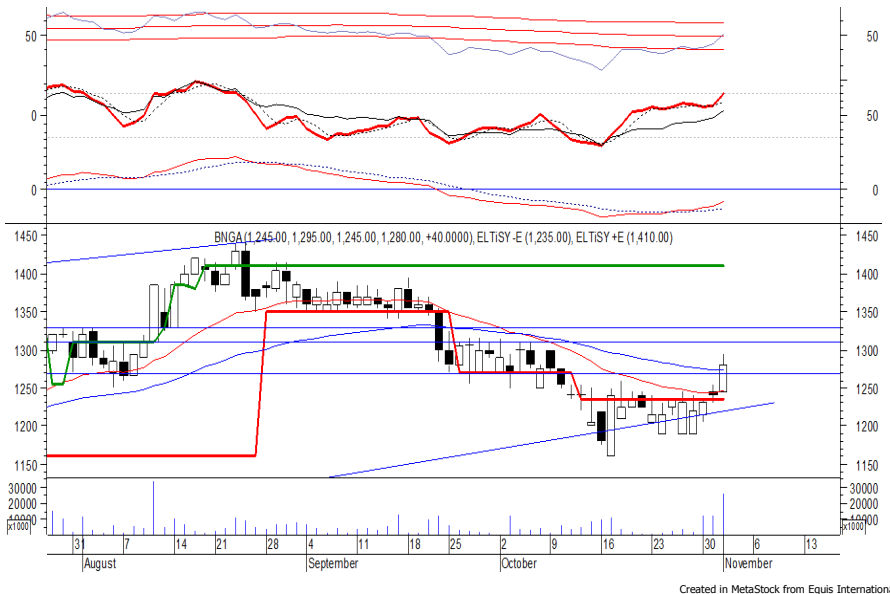
**Rekomendasi** : Buy on Breakout  
**Entry Level** : 3,510-3,530  
**Take Profit** : 3,650-3,700  
**Stop Loss** : 3,470

## PT Bank CIMB Niaga Tbk

(BNGA)  $\beta$  :

1.61 Price : 1,280

TP: 1,310-1,330



BNGA ditutup menguat pada perdagangan kemarin berada di level IDR 1,280.

Harga juga tampak sedang bergerak melewati resistance level IDR 1,270, di mana berpeluang menuju resistance level IDR 1,310 hingga IDR 1,330.

MACD yang mengalami golden cross memberikan peluang untuk melanjutkan penguatan. Kecuali harga berbalik melemah hingga di bawah IDR 1,255.

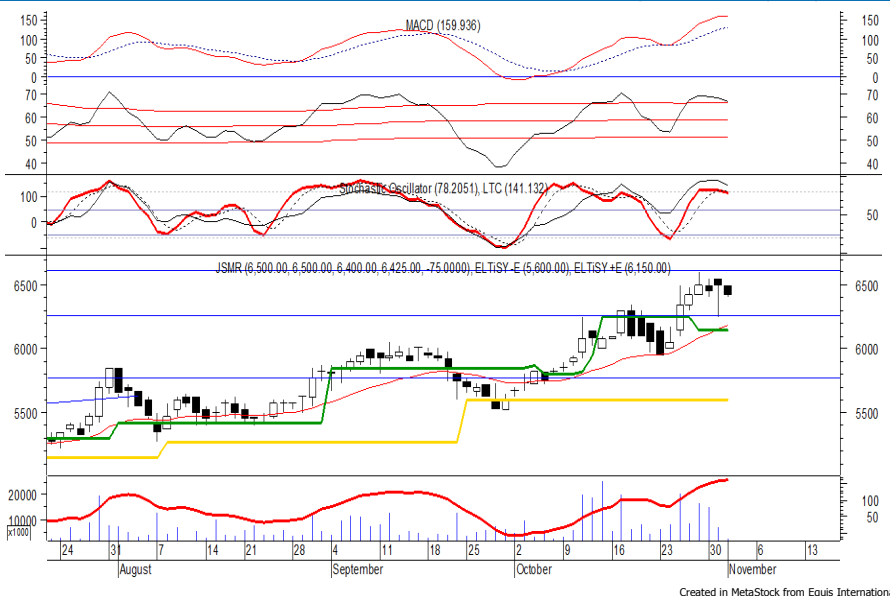
**Rekomendasi** : Speculative Buy  
**Entry Level** : 1,270-1,280  
**Take Profit** : 1,310-1,330  
**Stop Loss** : 1,250

## PT Jasa Marga Persero Tbk

(JSMR)  $\beta$  :

0.99 Price : 6,425

BF: 6,250-6,150



JSMR pada perdagangan kemarin ditutup melemah berada di level IDR 6,425.

Harga tampak belum mampu melewati resistance level di IDR 6,600 di mana berpotensi untuk kembali melanjutkan pelemahannya menuju support level IDR 6,250 hingga IDR 6,150.

Stochastic yang mengalami bearish crossover berpotensi membawa harga melemah. Kecuali harga mampu berbalik menguat di atas IDR 6,600.

**Rekomendasi** : Sell on Strength  
**Exit Level** : 6,550-6,475  
**Bottom Fishing** : 6,250-6,150  
**Buy Back** : 6,650

### Keterangan:

**Speculative Buy** : Harga menyentuh support, harga dapat saja meneruskan pelemahan, tetapi berpotensi rebound jika harga gagal break support.

**Buy** : Harga bergerak rebound meninggalkan support level.

**Trading Buy** : Harga masih berpotensi naik, tetapi sudah mendekati resistance level.

**Sell** : Harga telah mencapai resistance level.

Rekomendasi berdasarkan candlestick berlaku sampai 5 atau 8 hari ke depan (maksimal 10 hari), selebihnya dapat diartikan bahwa formasi candlestick gagal.

**Research Division**

|                    |  |                                  |                  |       |
|--------------------|--|----------------------------------|------------------|-------|
| Danny Eugene       | Strategist, Construction, Cement, Automotive | danny.eugene@megasekuritas.id    | +62 21 7917 5599 | 62431 |
| Helen Vincentia    | Consumer Goods, Retail                       | helen.vincentia@megasekuritas.id | +62 21 7917 5599 | 62035 |
| Fikri Syaryadi     | Banking                                      | fikri@megasekuritas.id           | +62 21 7917 5599 | 62035 |
| Adrian M. Priyatna | Property, Hospital                           | adrian@megasekuritas.id          | +62 21 7917 5599 | 62425 |
| Novilya Wiyatno    | Mining, Media, Plantation                    | novilya@megasekuritas.id         | +62 21 7917 5599 | 62425 |
| Dhian Karyantono   | Economist                                    | dhian@megasekuritas.id           | +62 21 7917 5599 | 62143 |
| Fadlillah Qudsi    | Technical Analyst                            | fadlillah.qudsi@megasekuritas.id | +62 21 7917 5599 | 62035 |

**Retail Equity Sales Division**

|                    |                                  |                                   |                  |       |
|--------------------|----------------------------------|-----------------------------------|------------------|-------|
| Hendry Kuswari     | Head of Sales, Trading & Dealing | hendry@megasekuritas.id           | +62 21 7917 5599 | 62038 |
| Dewi Suryani       | Retail Equity Sales              | dewi.suryani@megasekuritas.id     | +62 21 7917 5599 | 62441 |
| Brema Setyawan     | Retail Equity Sales              | brema.setyawan@megasekuritas.id   | +62 21 7917 5599 | 62126 |
| Ety Sulistyowati   | Retail Equity Sales              | ety.sulistyowati@megasekuritas.id | +62 21 7917 5599 | 62408 |
| Fadel M. Iqbal     | Retail Equity Sales              | fadel@megasekuritas.id            | +62 21 7917 5599 | 62164 |
| Andri Sumarno      | Retail Equity Sales              | andri@megasekuritas.id            | +62 21 7917 5599 | 62045 |
| Harini Citra       | Retail Equity Sales              | harini@megasekuritas.id           | +62 21 7917 5599 | 62161 |
| Syaifathir Muhamad | Retail Equity Sales              | fathir@megasekuritas.id           | +62 21 7917 5599 | 62179 |

**Corporate Equity Sales Division**

|                       |                        |                                  |                  |       |
|-----------------------|------------------------|----------------------------------|------------------|-------|
| Rachmadian Iskandar Z | Corporate Equity Sales | rachmadian@megasekuritas.id      | +62 21 7917 5599 | 62402 |
| Ratna Wijayanti       | Corporate Equity Sales | ratna.wijayanti@megasekuritas.id | +62 21 7917 5599 | 62055 |
| Reza Mahendra         | Corporate Equity Sales | reza.mahendra@megasekuritas.id   | +62 21 7917 5599 | 62409 |

**Fixed Income Sales & Trading**

Tel. +62 7917 5559-62 Fax. +62 21 7917 5965

**Investment Banking**

Tel. +62 21 7917 5599 Fax. +62 21 7919 3900

**Kantor Pusat**

 Menara Bank Mega Lt. 2  
 Jl. Kapt P. Tendean, Kav 12-14 A  
 Jakarta Selatan 12790

**Pondok Indah**

 Plaza 5 Pondok Indah Blok D No. 15 Lt. 2  
 Jl. Margaguna Raya Pondok Indah  
 Jakarta Selatan

**Kelapa Gading**

 Ruko Gading Bukit Indah Lt.2  
 Jl. Bukit Gading Raya Blok A No. 26, Kelapa Gading  
 Jakarta Utara - 14240

**DISCLAIMER**

This Document is for information only and for the use of the recipient. It is not to be reproduced or copied or made available to others. Under no circumstances is it to be considered as an offer to sell or solicitation to buy any security. Any recommendation contained in this report may not be suitable for all investors and strictly a personal view and should not be used as a sole judgment for investment. Moreover, although the information contained herein has been obtained from sources believed to be reliable, its accuracy, completeness and reliability cannot be guaranteed. All rights reserved by PT Mega Capital Sekuritas.