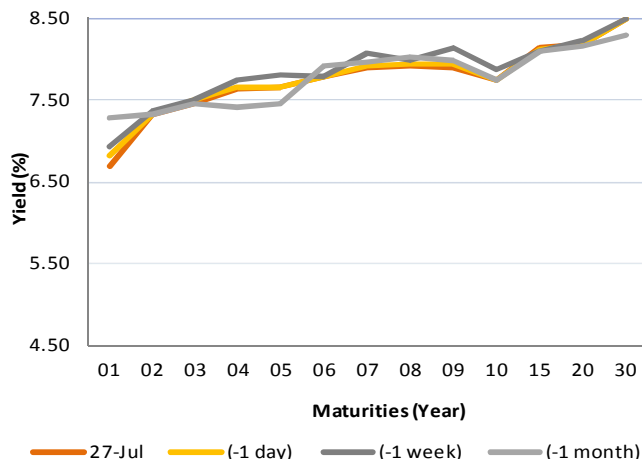


Fixed Income Daily Notes



Indonesia Government Bonds Yield				
Maturities (Year)	27-Jul	(-1 day)	(-1 week)	(-1 month)
01	6.69	6.83	6.93	7.27
02	7.31	7.33	7.37	7.33
03	7.46	7.50	7.49	7.45
04	7.64	7.66	7.73	7.42
05	7.66	7.66	7.80	7.45
06	7.79	7.79	7.79	7.92
07	7.89	7.91	8.06	7.97
08	7.92	7.94	7.98	8.02
09	7.90	7.94	8.14	7.98
10	7.75	7.74	7.88	7.73
15	8.13	8.12	8.10	8.10
20	8.17	8.19	8.23	8.15
30	8.48	8.48	8.48	8.30

Source: Bloomberg



Global Market Update

- At Friday, July 27 2018, US published its economic growth for 2nd Quarter. US economic growth for 2nd Quarter is 4.1% (QoQ), highest in the last 4 years. This high growth was pushed by personal consumption growth, which grew 4% from 1st Quarter. Export growth was also pushed US economic growth with 13% growth. Export growth was caused by tariff reducing by other country for US export goods. They began reducing tariff because of trade war threat from US if the tariff barrier had not been reduced. Because of this economic growth, many economists predicted that The Fed had locked the rate hiking 2 times more this year.
- At Friday, July 27, US 10-year treasury yield was fell to 2.96% because of US economic growth, which above expectation. Meanwhile, majority of global benchmark bond yield was flat, which was indicated by 10-years UK gilt and German Bund that stagnated at 1.28% and 0.40%.
- Pada hari Jumat, 27 Juli 2018, data terkait pertumbuhan ekonomi AS dirilis. Pada rilis tersebut, tercatat perekonomian AS bertumbuh sebesar 4,1%, tertinggi sejak 4 tahun. Salah satu pendorong dari signifikannya pertumbuhan ekonomi AS ialah pertumbuhan konsumsi rumah tangga, yang bertumbuh hingga 4%. Tidak hanya itu, pertumbuhan ekspor pun bertumbuh hingga 13% yang didorong oleh mulai lepasnya tarif luar negeri terhadap beberapa barang AS karena kekhawatiran negara lain atas ancaman pemberlakuan tarif oleh AS. Akibat dari pertumbuhan ekonomi AS ini, diprediksi The Fed mengunci kenaikan tingkat suku sebanyak 2 kali lagi pada tahun ini.
- Yield 10-years US Treasury note pada hari Jum'at, 27 Juli 2018 ditutup turun ke level 2,96% akibat pertumbuhan ekonomi AS yang berada di atas ekspektasi. Dari pasar obligasi global, yield acuan global sebagian besar ditutup datar, terlihat dari yield 10 tahun UK Gilt ditutup datar di level 1,28%. Sementara itu, yield 10 tahun German Bund juga ditutup stagnan pada 0,40%.

Domestic Market Update

- At Tuesday, July 31 2018, Government will issue IDR 10—20 trillion of government securities. There are 5 auctioned government securities; SPN03181101 (New Issuance), SPN12190801 (New Issuance), FR0063 (Reopening), FR0064 (Reopening), and FR0065 (Reopening).
- Today, Government bond prices on the secondary market are likely to strengthen moderately because of lower US 10-years treasury yield, but would be restrained by lower price tendency near bond auction. Rupiah will be ranging from IDR 14,344—14,394 and yield of 10 year benchmark bond (FR0064) will be ranging from 7.67% - 7.72%.
- Pada hari Selasa, 31 Juli 2018, pemerintah akan mengadakan lelang Surat Utang Negara (SUN) dengan target Rp 10-20 triliun. Adapun seri SUN yang akan dilelang ialah SPN03181101 (New Issuance), SPN12190801 (New Issuance), FR0063 (Reopening), FR0064(Reopening), dan FR0065 (Reopening).
- Hari ini, pergerakan harga SBN secara umum di pasar sekunder diprediksi cenderung menguat terbatas akibat turunnya yield AS yang dibatasi oleh kecenderungan turunnya harga menjelang lelang SUN. Nilai tukar rupiah terhadap dolar AS diprediksi bergerak pada kisaran Rp14.344 – Rp14.394 sedangkan yield benchmark 10 tahun (FR0064) pada perdagangan hari ini diperkirakan bergerak di rentang 7,67% - 7,72%.

Most Active Government Bonds	Last Price	Last Yield	Volume (IDR bn)
FR0069	100.95	6.46	3068
FR0059	95.00	7.79	2917
FR0063	92.00	5.00	1819
FR0072	99.75	5.17	1717
FR0053	102.70	7.22	1570
FR0061	98.35	7.50	1269
FR0073	104.75	8.14	948
FR0065	87.50	8.09	832
FR0070	102.29	7.86	627
FR0056	102.75	7.91	604

Most Active Corporate Bonds	Last Price	Last Yield	Volume (IDR bn)	
TRAC01BCN1	AA-(idn)	100.00	6.33	190
BBRI02DCN2	idAAA	100.85	7.42	80
BBRI02ECN1	idAAA	101.00	7.01	80
BEXI02BCN7	idAAA	101.30	6.82	80
ISAT01BCN4	idAAA	100.40	6.48	80
IMFI03BCN3	idA	100.23	6.92	78
ADMFO4BCN1	idAAA	100.04	7.40	75
MEDP01A	idA	100.00	7.98	75
SMBEXI01ACN1	idAAA(sy)	100.05	6.14	66
BIIF01ACN3	AA+(idn)	100.47	7.90	60

Global Stock Marketss	Last Price	Chg (bps)	% Chg	% YTD
Indonesia (JCI)	5989	43.00	0.72%	-5.77%
Malaysia (KLCI)	1769	2.91	0.16%	-1.54%
Thailand (SET)	1702	0.00	0.00%	-2.96%
Singapore (STI)	3325	-3.62	-0.11%	-2.3%
Hang Seng	28804	23.14	0.08%	-3.7%
Nikkei 225	22713	125.88	0.56%	-0.23%
Shanghai	2874	-8.63	-0.30%	-13.11%
Dow Jones (DJIA)	25451	-76.01	-0.30%	2.96%
London (FTSE 100)	7701	38.14	0.50%	0.18%
DAX	12860	51.17	0.40%	-0.4%

Global Bonds	27-Jul	(-1 day)	(-1 week)	(-1 month)
Fed Fund Rate & US T-Bonds Yield				
Fed Fund Rate	2.00	2.00	2.00	2.00
2-Year	2.55	2.53	2.51	2.49
5-Year	2.73	2.72	2.72	2.76
10-Year	2.96	2.98	2.89	2.86
30-Year	2.95	2.96	2.97	3.07

FX Rate	27-Jul	(-1 day)	(-1 week)
USD/IDR	14,369	14,470	14,498
GBP/USD	1.310	1.311	1.313
USD/JPY	111.0	111.2	111.4
USD/SGD	1.362	1.364	1.363
USD/THB	33.36	33.41	33.33
USD/MYR	4.061	4.065	4.063

10-Year Government Bond Yield	27-Jul	(-1 day)	(-1 week)	(-1 month)
UK	1.28	1.28	1.23	1.28
Germany	0.40	0.40	0.37	0.30
France	0.70	0.70	0.68	0.66
China	3.52	3.54	3.51	3.48
Japan	0.10	0.09	0.03	0.03
Korea	2.73	2.73	2.73	2.73
Thailand	2.71	2.71	2.75	2.58
Malaysia	4.08	4.08	4.07	4.20
Singapore	2.44	2.41	2.42	2.52
Indonesia USD Bond Yield				
INDO-22	3.76	3.76	3.76	3.96
INDO-27	4.29	4.26	4.27	4.51
INDO-47	4.92	4.89	4.91	5.22

Macroeconomic Data	Jun-18	May-18	Apr-18
Consumer Price Index (MoM)	0.59	0.21	0.10
Consumer Price Index (YoY)	3.12	3.23	3.41
Core Inflation (YoY)	2.72	2.75	2.69
BI 7-Day RR Rate (%)	5.25	4.75	4.25
Foreign Reserve (US\$ Bn)	119.8	122.9	124.9

Money Market	27-Jul	(-1 day)	(-1 week)	(-1 month)
JIBOR				
O/N	5.00	5.00	5.02	4.49
1M	6.46	6.51	6.70	6.96
3M	7.11	7.13	7.18	7.10
LIBOR				
1M	2.08	2.07	2.07	2.09
3M	2.34	2.34	2.34	2.34
6M	2.53	2.53	2.52	2.50
Indonesia Interest Rates				
Deposit 1M	5.67	5.68	5.67	5.65
Lending	13.7	13.5	13.8	13.6

Indonesia Sovereign CDS	2-year	5-year	10-year
As of			
27-Jul	41.38	107.71	184.92
(-1 Day)	42.32	106.53	175.17
(-1 Week)	44.06	118.95	198.29
(-1 Month)	53.24	136.07	219.68
(-1 Year)	42.12	111.58	182.22

Benchmark	27-Jul	(-1 day)	Change	Yield
FR0061	98.10	98.06	4	7.58%
FR0059	94.58	94.45	13	7.86%
FR0074	94.34	94.18	16	8.19%
FR0072	99.57	99.60	-3	8.29%

Government Bond Ownership As of July 26, 2018 (in Trillion)

Holders	2013	2014	2015	2016	2017	23-Jul-18	24-Jul-18	25-Jul-18	26-Jul-18
Banks	335.43	375.55	350.07	399.46	491.61	554.06	560.81	572.04	565.38
Bank Indonesia	44.44	41.63	148.91	134.25	141.83	128.08	123.03	108.63	119.08
Mutual Fund	42.50	45.79	61.60	85.66	104.00	113.3	113.3	112.7	112.6
Insurance	129.55	150.60	171.62	238.24	150.80	188.7	188.8	188.9	189.4
Foreign Investor	323.83	461.35	558.52	665.81	836.15	839.54	837.11	835.19	834.67
Pension Fund	39.47	43.30	49.83	87.28	198.06	207.35	207.85	208.19	208.88
Individual Investors	32.48	30.41	42.53	57.75	59.84	62.70	62.79	62.81	62.94
Others	47.56	61.32	78.76	104.84	117.48	131.33	131.37	131.42	131.76
Total	995.25	1,209.96	1,461.85	1,773.28	2,099.77	2,225.05	2,225.05	2,219.90	2,224.71

Source: Bloomberg, IDX & DJPPR

July 30, 2018



Government Bonds Prices

Closing Price Data : 27-Jul-2018

Series	Maturity	TTM	Coupon	Price	YTM	Price (-1)	Price Spread (bps)
FR0038	15-Aug-18	0.05	11.600%	100.55	-1.65%	100.57	-1.8
FR0048	15-Sep-18	0.14	9.000%	100.49	4.87%	100.50	-0.2
FR0069	15-Apr-19	0.72	7.875%	100.93	6.49%	100.90	3.2
FR0036	15-Sep-19	1.14	11.500%	105.06	6.74%	105.12	-5.7
FR0031	15-Nov-20	2.31	11.000%	107.90	7.19%	107.88	1.7
FR0034	15-Jun-21	2.89	12.800%	113.85	7.36%	113.82	3.0
FR0053	15-Jul-21	2.97	8.250%	102.29	7.37%	102.17	12.0
FR0061	15-May-22	3.80	7.000%	98.10	7.58%	98.06	3.7
FR0035	15-Jun-22	3.89	12.900%	117.24	7.67%	117.22	2.1
FR0043	15-Jul-22	3.97	10.250%	108.70	7.66%	108.64	5.9
FR0063	15-May-23	4.80	5.625%	92.20	7.59%	92.17	3.4
FR0046	15-Jul-23	4.97	9.500%	107.23	7.72%	107.23	0.0
FR0039	15-Aug-23	5.05	11.750%	116.28	7.78%	116.25	2.8
FR0070	15-Mar-24	5.64	8.375%	102.75	7.76%	102.74	0.7
FR0044	15-Sep-24	6.14	10.000%	110.35	7.84%	110.36	-0.2
FR0040	15-Sep-25	7.14	11.000%	116.98	7.84%	116.88	10.0
FR0037	15-Sep-26	8.14	12.000%	124.37	7.88%	124.27	10.3
FR0056	15-Sep-26	8.14	8.375%	103.06	7.86%	102.81	25.2
FR0059	15-May-27	8.81	7.000%	94.58	7.86%	94.45	12.7
FR0042	15-Jul-27	8.97	10.250%	114.64	7.93%	114.62	2.7
FR0047	15-Feb-28	9.56	10.000%	113.26	7.99%	113.24	2.0
FR0064	15-May-28	9.81	6.125%	89.28	7.70%	89.27	1.1
FR0071	15-Mar-29	10.64	9.000%	106.71	8.05%	106.80	-8.3
FR0052	15-Aug-30	12.06	10.500%	117.10	8.23%	117.10	0.0
FR0073	15-May-31	12.81	8.750%	104.25	8.20%	104.22	3.4
FR0054	15-Jul-31	12.98	9.500%	110.40	8.18%	110.37	3.4
FR0058	15-Jun-32	13.90	8.250%	98.00	8.50%	98.00	0.0
FR0074	15-Aug-32	14.06	7.500%	94.34	8.19%	94.18	16.1
FR0065	15-May-33	14.81	6.625%	87.53	8.08%	87.62	-8.9
FR0068	15-Mar-34	15.64	8.375%	100.82	8.28%	100.79	2.6
FR0072	15-May-36	17.81	8.250%	99.57	8.29%	99.60	-2.8
FR0045	15-May-37	18.81	9.750%	113.45	8.32%	113.45	0.0
FR0075	15-May-38	138.47	7.500%	93.60	8.16%	93.63	-3.0
FR0050	15-Jul-38	19.98	10.500%	121.25	8.30%	121.25	0.0
FR0057	15-May-41	22.82	9.500%	110.76	8.43%	110.76	-0.2
FR0062	15-Apr-42	23.73	6.375%	78.85	8.45%	78.87	-2.1
FR0067	15-Jul-43	24.98	8.750%	103.16	8.45%	103.16	-0.6
FR0076	15-May-48	29.82	7.375%	88.55	8.48%	88.55	0.1

Source: Bloomberg, IBPA & MCS Estimates

July 30, 2018

Macroeconomic Indicator Calendar (July 30 - August 03 2018)

INDONESIA

Date	Indicator	Series Data	Actual	Previous	Projection
31	M2 Money Supply (YoY)	Jun-18	-	6.1%	-
01	Inflation Rate (YoY)	Jul-18	-	3.12%	3.03%
01	Core Inflation Rate (YoY)	Jul-18	-	2.72%	2.69%

GLOBAL

Date	Indicator	Country	Series Data	Actual	Previous	Projection
30	Inflation Rate Prel. (YoY)	Germany	Jul-18	-	2.1%	2.0%
31	BoJ Interest Rate	Japan	-	-	-0.1%	-0.1%
31	NBS Manufacturing PMI	China	Jul-18	-	51.5	51.2
31	Economic Growth Rate Flash. (YoY)	Euro Area	Quarter-II	-	2.5%	2.5%
31	Unemployment Rate	Euro Area	Jun-18	-	8.4%	8.5%
01	ADP Employment Change	US	Jul-18	-	177 thousand	174 thousand
01	Crude Oil Inventory	US	Week Ended, July 20 - 2018	-	-6.15 million barrel	-0.09 million barrel
02	Fed Interest Rate	US	-	-	2.00%	2.00%
02	BoE Interest Rate	United Kingdom	-	-	0.50%	0.75%
02	Initial Jobless Claims	US	Week Ended, July 28-2018	-	217 thousand	219 thousand
02	Continuing Jobless Claims	US	Week Ended, July 21-2018	-	1745 thousand	1754 thousand
03	Balance of Trade	US	Jun-18	-	-43.1 billion USD	-41.0 billion USD
03	Non-Farm Payrolls	US	Jul-18	-	213 thousand	191 thousand
03	Unemployment Rate	US	Jul-18	-	4.0%	4.0%

Source: Tradingeconomics, Bloomberg, and MCS Estimates (2018)

July 30, 2018

PT. MEGA CAPITAL SEKURITAS
Head Office
Menara Bank Mega Lt. 2
Jl. Kapten P. Tendean Kav 12-14A
Jakarta 12790

Dealing Room

Phone No : +62 21 7995795

Fax No : +62 21 79175965

Eva Sarah Hutabarat	eva@megasekuritas.id	Head of Debt Capital Market
Cicik Sukaesih	cicik@megasekuritas.id	Debt Sales
Emilda Mardiyanti	emilda.mardiyanti@megasekuritas.id	Debt Sales
Ajeng Palupi P.	palupi@megasekuritas.id	Debt Sales
Qolbie Ardie	qolbie@megasekuritas.id	Economist & Fixed Income Analyst
Siti Maulina M.	siti.maulina@megasekuritas.id	Administrative Assistant

DISCLAIMER

This Document is for information only and for the use of the recipient. It is not to be reproduced or copied or made available to others. Under no circumstances is it to be considered as an offer to sell or solicitation to buy any security. Any recommendation contained in this report may not be suitable for all investors and strictly a personal view and should not be used as a sole judgment for investment. Moreover, although the information contained herein has been obtained from sources believed to be reliable, its accuracy, completeness and reliability cannot be guaranteed. All rights reserved by PT Mega Capital Sekuritas.