

July 23, 2018

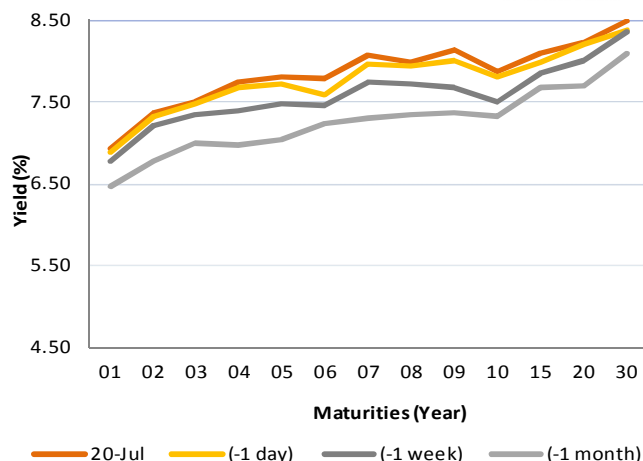
Fixed Income Daily Notes



Indonesia Government Bonds Yield

Maturities (Year)	20-Jul	(-1 day)	(-1 week)	(-1 month)
01	6.93	6.88	6.77	6.47
02	7.37	7.33	7.21	6.78
03	7.49	7.48	7.35	7.00
04	7.73	7.68	7.39	6.97
05	7.80	7.72	7.47	7.03
06	7.79	7.59	7.45	7.23
07	8.06	7.96	7.74	7.30
08	7.98	7.94	7.72	7.34
09	8.14	8.00	7.67	7.36
10	7.88	7.81	7.49	7.32
15	8.10	7.99	7.84	7.69
20	8.23	8.19	8.00	7.71
30	8.48	8.38	8.35	8.10

Source: Bloomberg



Global Market Update

- At Friday, July 20, US treasury yield rose to 2.89% after Trump's comment about The Fed pushed bond selloff on Friday. On the other side, global benchmark bond yield also moved upward, indicated by 10-years UK gilt and German Bund that rose to 1.23% and 0.37%.
- Yield US Treasury pada hari Jum'at, 20 Juli 2018 ditutup naik ke level 2,89% akibat komentar Trump terkait The Fed mendorong penjualan obligasi oleh investor. Dari pasar obligasi global, yield acuan global sebagian besar juga ditutup naik, terlihat dari yield 10 tahun UK Gilt ditutup naik ke level 1,23%. Sementara itu, yield 10 tahun German Bund ditutup naik ke level 0,37%.

Domestic Market Update

- Tomorrow, July 24 2018, Government will issue IDR 6 trillion of Islamic Government Securities (SBSN) or Sukuk. There are 6 auctioned Sukuk; SPN-S 11012019 (Reopening), SPN-S 11042019 (Reopening), PBS016 (Reopening), PBS012(Reopening), PBS002 (Reopening), and PBS017 (Reopening).
- Pada hari Selasa, 24 Juli 2018, pemerintah akan mengadakan lelang Surat Berharga Syariah Negara (SBSN) atau Sukuk dengan target indikatif Rp 6 triliun. Adapun seri SBSN yang akan dilelang ialah ialah SPN-S 11012019 (Reopening), SPN-S 11042019 (Reopening), PBS016 (Reopening), PBS012(Reopening), PBS002 (Reopening), dan PBS017 (Reopening).
- Today, Government bond prices on the secondary market are likely to weaken because of higher US yield. Rupiah will be ranging from IDR 14,466—14,530 and yield of 10 year benchmark bond (FR0064) will be ranging from 7.82% - 7.97%.
- Hari ini, pergerakan harga SBN secara umum di pasar sekunder diprediksi cenderung melemah akibat naiknya yield AS. Nilai tukar rupiah terhadap dolar AS diprediksi bergerak pada kisaran Rp14.466 – Rp14.530 sedangkan yield benchmark 10 tahun (FR0064) pada perdagangan hari ini diperkirakan bergerak di rentang 7,82% - 7,97%.

Most Active Government Bonds	Last Price	Last Yield	Volume (IDR bn)
FR0056	102.10	8.02	1980
FR0070	102.00	7.92	1734
FR0075	95.00	8.01	1363
FR0063	91.55	7.76	1358
FR0072	99.15	8.34	1245
FR0059	93.35	8.07	1111
SPN12190214	96.82	5.85	1100
FR0071	106.65	8.06	1094
SPN12190314	96.37	5.90	1000
FR0064	88.25	7.86	953

Most Active Corporate Bonds	Last Price	Last Yield	Volume (IDR bn)	
BIIF01ACN3	AA+(idn)	100.30	8.05	145
IIFFO1A	idAAA	101.00	7.20	100
APAI01C	idAAA	100.00	8.55	80
BAFI02A	idAA	98.80	7.74	60
INDF07	idAA+	102.40	7.30	60
SIAGI01ACN1	A-(idn)	101.14	9.13	58
PNBN02CN3	idAA	97.39	8.29	54
FIFA03ACN2	idAAA	100.13	5.96	50
SWMEDP01B	idA(sy)	98.61	10.75	40
SMADMF03ACN2	idAAA(sy)	98.13	6.10	29

Global Stock Markets	Last Price	Chg (bps)	% Chg	% YTD
Indonesia (JCI)	5873	1.71	0.03%	-7.60%
Malaysia (KLCI)	1755	-4.57	-0.26%	-2.35%
Thailand (SET)	1671	24.17	1.47%	-4.71%
Singapore (STI)	3298	20.25	0.62%	-3.1%
Hang Seng	28224	213.62	0.76%	-5.7%
Nikkei 225	22698	-66.80	-0.29%	-0.29%
Shanghai	2829	56.73	2.05%	-14.45%
Dow Jones (DJIA)	25058	-6.38	-0.03%	1.37%
London (FTSE 100)	7679	-5.18	-0.07%	-0.12%
DAX	12561	-124.87	-0.98%	-2.8%

Global Bonds	20-Jul	(-1 day)	(-1 week)	(-1 month)
Fed Fund Rate & US T-Bonds Yield				
Fed Fund Rate	2.00	2.00	2.00	2.00
2-Year	2.55	2.526	2.51	2.49
5-Year	2.73	2.722	2.72	2.76
10-Year	2.89	2.84	2.83	2.90
30-Year	2.95	2.96	2.97	3.07
10-Year Government Bond Yield				
UK	1.23	1.18	1.27	1.32
Germany	0.37	0.33	0.34	0.34
France	0.68	0.62	0.62	0.71
China	3.51	3.44	3.48	3.58
Japan	0.03	0.04	0.04	0.03
Korea	2.73	2.73	2.73	2.73
Thailand	2.75	2.77	2.60	2.64
Malaysia	4.07	4.09	4.09	4.21
Singapore	2.42	2.43	2.45	2.56
Indonesia USD Bond Yield				
INDO-22	3.76	3.76	3.79	3.98
INDO-27	4.27	4.27	4.33	4.48
INDO-47	4.91	4.92	4.95	5.20

FX Rate	20-Jul	(-1 day)	(-1 week)
USD/IDR	14,498	14,507	14,372
GBP/USD	1.313	1.302	1.322
USD/JPY	111.4	112.5	112.4
USD/SGD	1.363	1.371	1.365
USD/THB	33.33	33.47	33.31
USD/MYR	4.063	4.074	4.052

Macroeconomic Data	Jun-18	May-18	Apr-18
Consumer Price Index (MoM)	0.59	0.21	0.10
Consumer Price Index (YoY)	3.12	3.23	3.41
Core Inflation (YoY)	2.72	2.75	2.69
BI 7-Day RR Rate (%)	5.25	4.75	4.25
Foreign Reserve (US\$ Bn)	119.8	122.9	124.9

Indonesia Sovereign CDS	2-year	5-year	10-year
As of 20-Jul	44.06	118.95	198.29
(-1 Day)	44.00	118.77	198.01
(-1 Week)	45.02	119.75	199.95
(-1 Month)	51.32	130.75	214.64
(-1 Year)	43.82	115.80	184.03

Money Market	20-Jul	(-1 day)	(-1 week)	(-1 month)
JIBOR				
O/N	5.02	5.02	4.98	4.45
1M	6.70	6.79	7.05	6.86
3M	7.18	7.19	7.31	7.08
LIBOR				
1M	2.07	2.08	2.07	2.10
3M	2.34	2.35	2.34	2.34
6M	2.52	2.53	2.52	2.51
Indonesia Interest Rates				
Deposit 1M	5.67	5.68	5.66	5.63
Lending	13.8	13.8	14.2	13.9

Benchmark	20-Jul	(-1 day)	Change	Yield
FR0061	97.96	98.13	-17	7.62%
FR0059	93.54	94.40	-86	8.04%
FR0074	93.90	94.82	-92	8.24%
FR0072	99.58	100.46	-88	8.29%

Government Bond Ownership As of July 19, 2018 (in Trillion)

Holders	2013	2014	2015	2016	2017	16-Jul-18	17-Jul-18	18-Jul-18	19-Jul-18
Banks	335.43	375.55	350.07	399.46	491.61	529.56	536.87	548.63	567.78
Bank Indonesia	44.44	41.63	148.91	134.25	141.83	139.53	130.70	119.68	113.13
Mutual Fund	42.50	45.79	61.60	85.66	104.00	112.9	112.9	112.9	113.3
Insurance	129.55	150.60	171.62	238.24	150.80	188.0	188.2	188.2	188.5
Foreign Investor	323.83	461.35	558.52	665.81	836.15	835.90	837.01	836.22	842.08
Pension Fund	39.47	43.30	49.83	87.28	198.06	205.48	205.65	205.69	206.35
Individual Investors	32.48	30.41	42.53	57.75	59.84	62.54	62.53	62.57	62.62
Others	47.56	61.32	78.76	104.84	117.48	131.15	131.18	131.17	131.29
Total	995.25	1,209.96	1,461.85	1,773.28	2,099.77	2,205.05	2,205.05	2,205.05	2,225.05

Source: Bloomberg, IDX & DJPPR

July 23, 2018



Government Bonds Prices

Closing Price Data : 20-Jul-2018

Series	Maturity	TTM	Coupon	Price	YTM	Price (-1)	Price Spread (bps)
FR0038	15-Aug-18	0.07	11.600%	100.63	1.20%	100.58	5.2
FR0048	15-Sep-18	0.16	9.000%	100.58	4.79%	100.50	7.9
FR0069	15-Apr-19	0.74	7.875%	100.85	6.64%	100.86	-0.8
FR0036	15-Sep-19	1.16	11.500%	105.18	6.70%	105.12	6.0
FR0031	15-Nov-20	2.33	11.000%	107.82	7.25%	108.07	-25.0
FR0034	15-Jun-21	2.91	12.800%	113.89	7.37%	113.91	-1.1
FR0053	15-Jul-21	2.99	8.250%	102.29	7.38%	102.37	-8.4
FR0061	15-May-22	3.82	7.000%	97.96	7.62%	98.13	-17.3
FR0035	15-Jun-22	3.91	12.900%	119.38	7.13%	119.38	0.0
FR0043	15-Jul-22	3.99	10.250%	108.88	7.62%	109.00	-11.9
FR0063	15-May-23	4.82	5.625%	91.76	7.71%	92.03	-26.9
FR0046	15-Jul-23	4.99	9.500%	108.60	7.41%	108.60	0.0
FR0039	15-Aug-23	5.07	11.750%	116.08	7.84%	117.07	-98.8
FR0070	15-Mar-24	5.66	8.375%	102.64	7.78%	103.70	-105.8
FR0044	15-Sep-24	6.16	10.000%	110.70	7.77%	110.70	0.0
FR0040	15-Sep-25	7.16	11.000%	116.74	7.89%	117.13	-38.6
FR0037	15-Sep-26	8.16	12.000%	125.34	7.75%	125.34	0.0
FR0056	15-Sep-26	8.16	8.375%	102.62	7.93%	103.07	-44.8
FR0059	15-May-27	8.82	7.000%	93.54	8.04%	94.40	-85.8
FR0042	15-Jul-27	8.99	10.250%	114.28	7.99%	114.83	-54.7
FR0047	15-Feb-28	9.58	10.000%	112.88	8.04%	113.99	-111.8
FR0064	15-May-28	9.83	6.125%	88.53	7.82%	88.87	-34.6
FR0071	15-Mar-29	10.66	9.000%	106.75	8.04%	108.03	-128.4
FR0052	15-Aug-30	12.08	10.500%	117.00	8.25%	117.00	0.0
FR0073	15-May-31	12.83	8.750%	104.42	8.19%	105.13	-71.4
FR0054	15-Jul-31	12.99	9.500%	110.82	8.13%	111.24	-41.9
FR0058	15-Jun-32	13.92	8.250%	100.25	8.22%	100.25	0.0
FR0074	15-Aug-32	14.08	7.500%	93.90	8.24%	94.82	-92.0
FR0065	15-May-33	14.83	6.625%	87.89	8.04%	88.83	-93.6
FR0068	15-Mar-34	15.66	8.375%	101.06	8.25%	100.97	8.6
FR0072	15-May-36	17.83	8.250%	99.58	8.29%	100.46	-88.0
FR0045	15-May-37	18.83	9.750%	114.28	8.24%	114.276	0.0
FR0075	15-May-38	138.47	7.500%	93.35	8.18%	93.99	-64.6
FR0050	15-Jul-38	20.00	10.500%	122.00	8.24%	122.00	0.0
FR0057	15-May-41	22.84	9.500%	110.76	8.43%	110.76	0.2
FR0062	15-Apr-42	23.75	6.375%	78.83	8.46%	78.92	-9.6
FR0067	15-Jul-43	25.00	8.750%	103.25	8.44%	103.16	9.1
FR0076	15-May-48	29.84	7.375%	88.30	8.38%	90.63	-232.7

Source: Bloomberg, IBPA & MCS Estimates

July 23, 2018

Macroeconomic Indicator Calendar (July, 23 - 27 2018)

INDONESIA

Date	Indicator	Series Data	Actual	Previous	Projection
24	Foreign Direct Investment (YoY)	Quarter-II	-	12.4%	-

GLOBAL

Date	Indicator	Country	Series Data	Actual	Previous	Projection
23	Consumer Confidence Flash	Euro Area	Jul-18	-	-0.5	-1.3
24	Nikkei Manufacturing PMI Flash	Japan	Jul-18	-	53.0	53.1
24	Markit Manufacturing PMI Flash	Germany	Jul-18	-	55.9	56.5
24	Markit Composite PMI Flash	US	Jul-18	-	56.2	54.3
25	Ifo Business Climate	Germany	Jul-18	-	101.8	100.9
25	New Home Sales	US	Jun-18	-	0.69 million	0.59 million
25	Crude Oil Inventory	US	Week Ended, July 20 - 2018	-	5.84 million barrel	-2.7 million barrel
26	ECB Interest Rate	Euro Area	-	-	0.0%	0.0%
26	Durable Goods Order (MoM)	US	Jun-18	-	-0.6%	1.7%
26	Initial Jobless Claims	US	Week Ended, July 21-2018	-	207 thousand	221 thousand
26	Continuing Jobless Claims	US	Week Ended, July 14-2018	-	1751 thousand	1734 thousand
27	Economic Growth Adv. (QoQ)	US	Quarter-II	-	2%	3%

Source: Tradingeconomics and Bloomberg (2018)

July 23, 2018

PT. MEGA CAPITAL SEKURITAS
Head Office
Menara Bank Mega Lt. 2
Jl. Kapten P. Tendean Kav 12-14A
Jakarta 12790

Dealing Room

Phone No : +62 21 7995795

Fax No : +62 21 79175965

Eva Sarah Hutabarat	eva@megasekuritas.id	Head of Debt Capital Market
Cicah Sukaesih	cicah@megasekuritas.id	Debt Sales
Emilda Mardiyanti	emilda.mardiyanti@megasekuritas.id	Debt Sales
Ajeng Palupi P.	palupi@megasekuritas.id	Debt Sales
Qolbie Ardie	qolbie@megasekuritas.id	Economist & Fixed Income Analyst
Siti Maulina M.	siti.maulina@megasekuritas.id	Administrative Assistant

DISCLAIMER

This Document is for information only and for the use of the recipient. It is not to be reproduced or copied or made available to others. Under no circumstances is it to be considered as an offer to sell or solicitation to buy any security. Any recommendation contained in this report may not be suitable for all investors and strictly a personal view and should not be used as a sole judgment for investment. Moreover, although the information contained herein has been obtained from sources believed to be reliable, its accuracy, completeness and reliability cannot be guaranteed. All rights